



68

70

72

**Worples Road
Isleworth**

£700,000

ChaseBuchanan

Key Features

- Viewings accompanied by Chase Buchanan
- Two bedroom period property
- Immaculately presented throughout
- Modern kitchen with island, under floor heating and Bi-fold patio doors
- Open fireplace
- Generous size low maintenance garden
- Spacious accommodation
- Highly sought after location
- Ample on road parking
- Potential to develop (STPP)

Description

Welcome to this charming two-bedroom period property on Worple Road in Old Isleworth. This delightful house boasts character features throughout, giving it a unique and inviting feel but benefitting immensely from all the modern updates added to this wonderful property.

Upon entering, you are greeted by a generous hallway that leads you to two reception rooms that offer ample space for entertaining, relaxing, and boasting a stunning working fireplace.

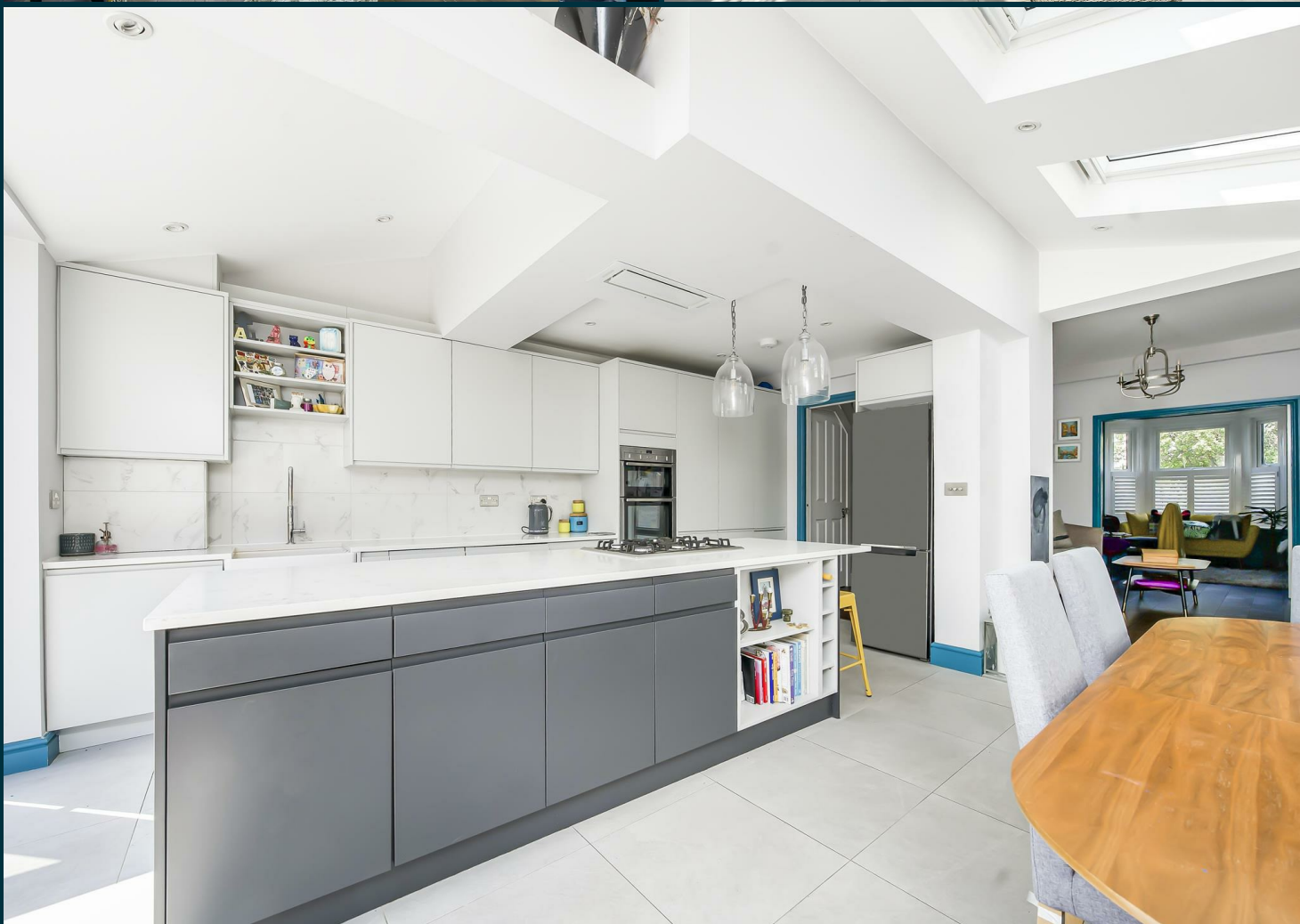
One of the highlights of this lovely home is the modern kitchen with underfloor heating, ample storage, and stone worktops, with bi-fold doors that flood the space with natural light and create a seamless transition to the outdoors.

The property is in immaculate condition, a true testament to the care and attention to detail that has been put into maintaining it. Whether you are looking to move right in or add your personal touch, this house is ready to accommodate your needs.

Outside, you will find a beautiful patio area with a generous low-maintenance garden perfect for enjoying the outdoors without the hassle of extensive upkeep. This tranquil space provides a lovely retreat where you can unwind after a long day.

The property has further potential for development by adding a third bedroom to the loft space (STPP).

Don't miss the opportunity to make this charming house your new home. With its character features, modern amenities, and convenient location in Isleworth, this property offers a wonderful blend of comfort and style. Contact us today to arrange a viewing and experience the allure of Worple Road for yourself.

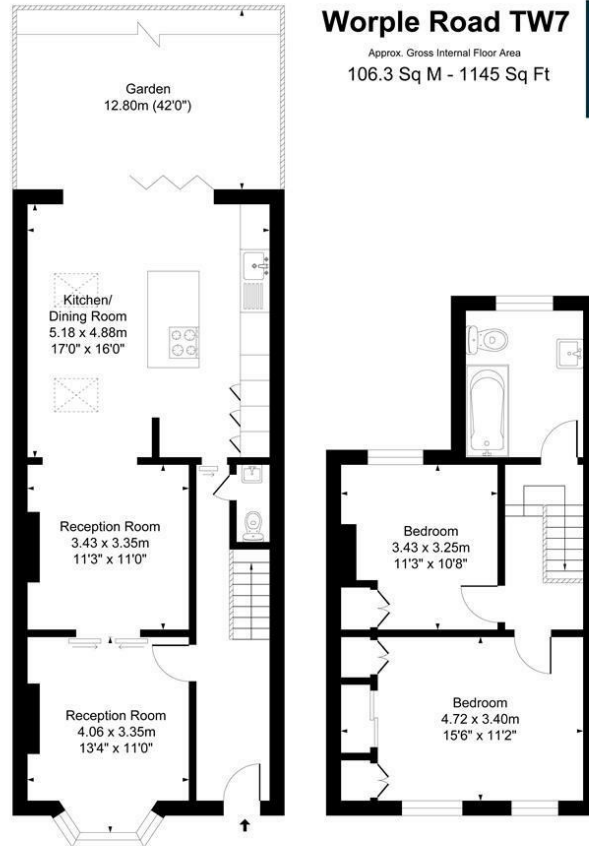




Worple Road TW7

Approx. Gross Internal Floor Area
106.3 Sq M - 1145 Sq Ft

ChaseBuchanan



Ground Floor
Approximate Floor Area
682.38 sq.ft
(63.39 sq.m)

First Floor
Approximate Floor Area
462.12 sq.ft
(42.93 sq.m)

Illustration for identification purposes only, measurements are approximate, not to scale.
Produced By Esjay Property Marketing

For more information or to book a viewing, please contact:

020 8758 1755

isleworth@chasebuchanan.london

480 London Road, TW7 4DE

ChaseBuchanan

Care has been taken in the preparation of these particulars, however, their accuracy is not guaranteed and they do not form part of any contract. Measurements stated must be considered maximum.

