



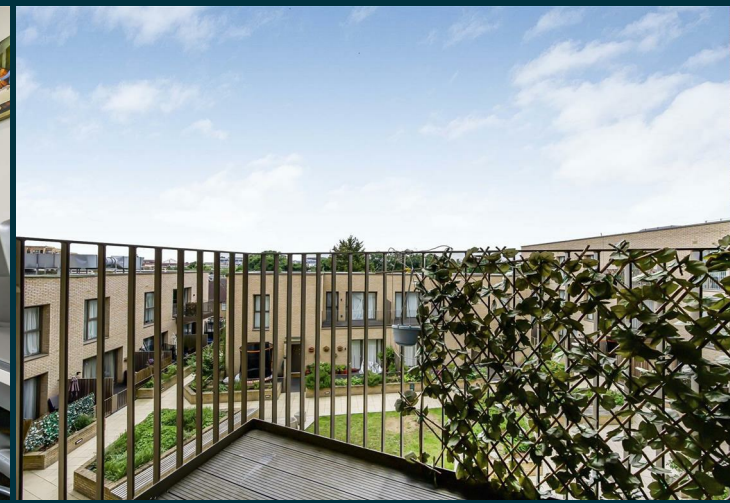
**Clovelly Road  
Hounslow**

£340,000

**ChaseBuchanan**

## Key Features

- Viewings accompanied by Chase Buchanan
- One bedroom apartment
- Excellent condition throughout
- Short walk to Hounslow central tube station
- Lift service
- Allocated underground parking



## Description

Welcome to this charming one-bedroom flat on Clovelly Road, this purpose-built property boasts a spacious reception room, perfect for entertaining guests or relaxing after a long day. The flat is in excellent condition, ensuring a comfortable and inviting atmosphere for its new owners.

One of the highlights of this property is the lovely balcony, where you can enjoy your morning coffee or unwind in the evening while taking in the views. Additionally, the convenience of having parking available means you never have to worry about finding a spot after a busy day out and about.

For added ease, the lift service in the building makes moving in and out a breeze, especially when carrying groceries or heavy items. Whether you're a first-time buyer, looking to downsize, or searching for an investment opportunity, this flat offers a perfect blend of comfort and convenience in a sought-after location.

Don't miss out on the chance to make this delightful flat your new home. Contact us today to arrange a viewing and experience the potential this property has to offer.

Living at Furnival Court, you're well connected to the city with Hounslow central station just a 4-minute walk connecting to central London in as little as 27 minutes.





Approx. Gross Internal Floor Area  
53.8 Sq M - 580 Sq Ft

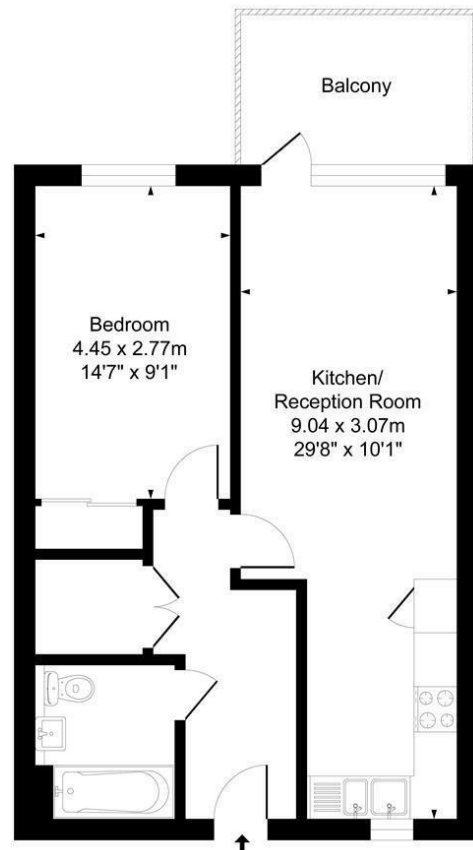


Illustration for identification purposes only, measurements are approximate, not to scale.  
Produced By Esjay Property Marketing

For more information or to book a viewing, please contact:

**020 8758 1755**

isleworth@chasebuchanan.london

480 London Road, TW7 4DE

Care has been taken in the preparation of these particulars, however, their accuracy is not guaranteed and they do not form part of any contract. Measurements stated must be considered maximum.

