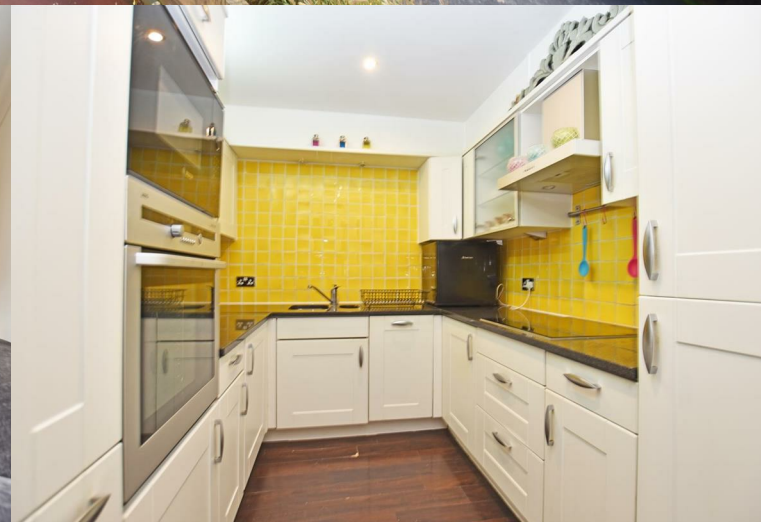


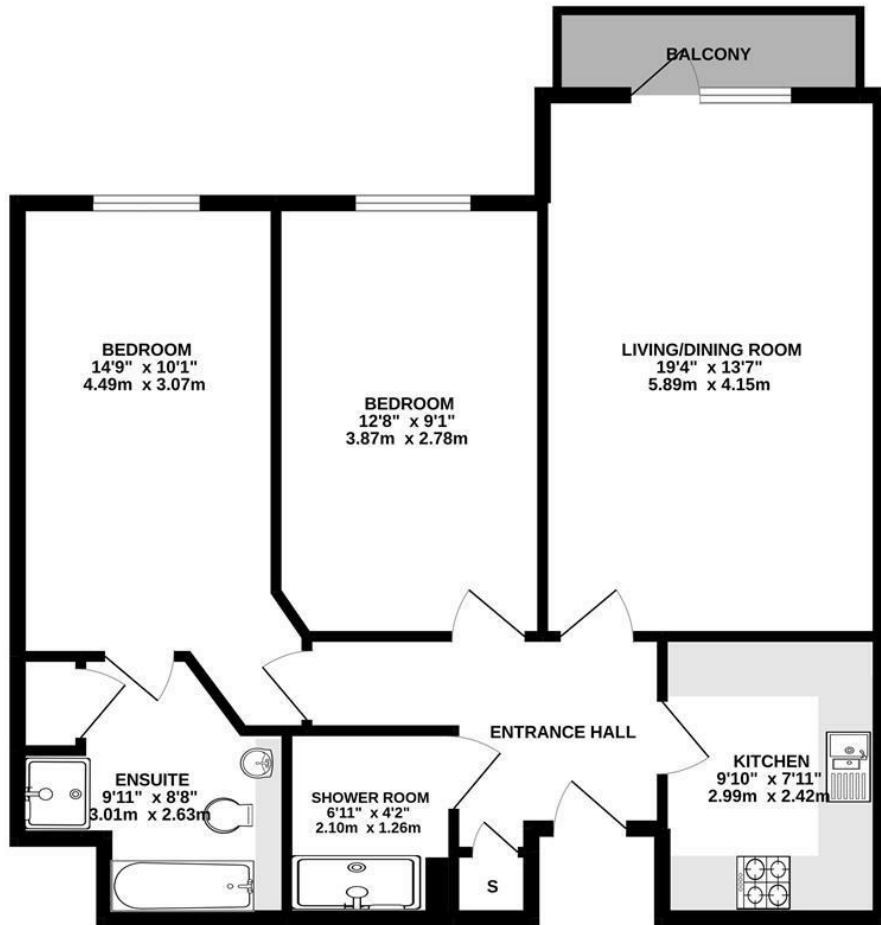
**High Street
Brentford
TW8 0DT**

£2,450 Per Month

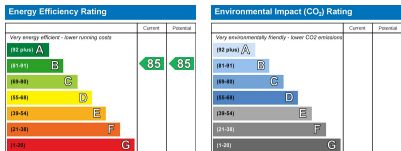
ChaseBuchanan



830 sq.ft. (77.1 sq.m.) approx.



TOTAL FLOOR AREA : 830 sq.ft. (77.1 sq.m.) approx.
 Produced solely for Chase Buchanan
 Made with Metropix ©2022



- First floor apartment
- Two bedrooms
- Two bathrooms
- One allocated underground parking
- Close to Kew Bridge station
- River views
- Private balcony
- EPC rating B

Set in a great location with all the local amenities within a stone's throw away, a two bedroom, two bathroom first floor apartment.

This stunning home is presented in immaculate condition and offers not only an abundance of space but also stunning views of the River Thames from all of the rooms.

Features include a spacious lounge, the ideal place to put your feet up with the family or somewhere the eager host can entertain their friends.

Further benefits include separate kitchen, two double bedrooms, with built in wardrobes to the master, modern shower room with en-suite bathroom to the master, large private balcony with beautiful views and one allocated underground parking space.

This is a great property with both Brentford and Kew Bridge station just moments away as well as being close to schools, shops, bus links and the A4. Seen as the ideal home for a professional couple and early viewings are highly advised to avoid disappointment.

Chase Buchanan are bonded members of ARLA PropertyMark

For more information or to book a viewing, please contact:

020 8758 1755

Chase Buchanan

7 Odeon Parade, 480 London Road, Isleworth, Middlesex, TW7 4DE

Care has been taken in the preparation of these particulars, however, their accuracy is not guaranteed and they do not form part of any contract. Measurements stated must be considered maximum.