



**Whitton Dene
Hounslow**

£775,000

ChaseBuchanan

Key Features

- Viewings accompanied by Chase Buchanan
- Four bedroom semi-detached property
- Immaculately presented throughout
- Two family bathrooms
- Picturesque views over Murray Park
- Off road parking for three cars
- Generous open plan kitchen
- Potential to develop further (STPP)



Description

Welcome to this fabulous, four-bedroom semi-detached family home located in the picturesque area of Whitton Dene, Hounslow. This property is a true gem, boasting a prime location directly overlooking the beautiful Murray Park.

Upon entering, you will be greeted by a home in excellent condition because the property has been completely refurbished throughout incorporating a substantial extension to the rear and side. The spacious living room and family room provide ample space for relaxation and entertainment, while the open-plan kitchen /diner is ideal for hosting gatherings and creating culinary delights.

One of the standout features of this property is the large garden with a patio area, perfect for enjoying a morning coffee or hosting summer barbecues with family and friends. The potential to further extend the property presents an exciting opportunity to customise and expand the living space to suit your needs and preferences.

Don't miss out on the chance to own this delightful property in Whitton Dene. With its ideal location, spacious interior, and potential for further development, this house offers a wonderful opportunity to create the home of your dreams. Contact us today to arrange a viewing and experience the magic of this lovely abode for yourself.

Whitton Dene is a popular residential road and is well-positioned for excellent local schools, amenities, commuter links, and parks. Neighboring areas of Whitton, Twickenham, Richmond, and St Margarets are nearby as well as easy access to A316/M3, A4/M4 to London and Heathrow.





Whitton Dene TW3

Approx. Gross Internal Floor Area
135.1 Sq M - 1455 Sq Ft

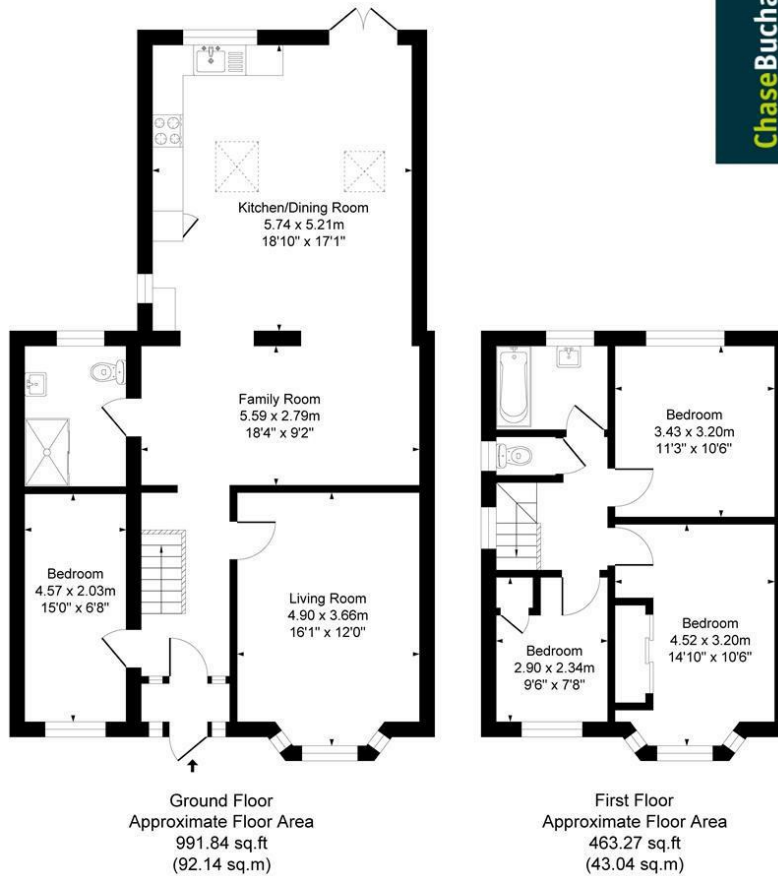


Illustration for identification purposes only, measurements are approximate, not to scale.
Produced By Esjay Property Marketing

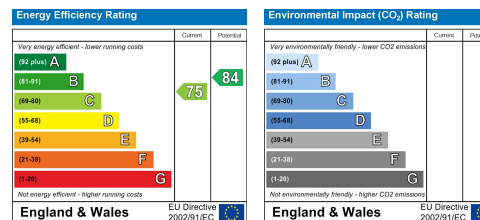
For more information or to book a viewing, please contact:

020 8758 1755

isleworth@chasebuchanan.london

480 London Road, TW7 4DE

Care has been taken in the preparation of these particulars, however, their accuracy is not guaranteed and they do not form part of any contract. Measurements stated must be considered maximum.



ChaseBuchanan