



**Manor House Way
Old Isleworth**

£699,950

ChaseBuchanan

Key Features

- Viewings accompanied by Chase Buchanan
- Three bedroom terraced property
- Excellent condition
- Generous accommodation
- Courtyard garden
- Comes with garage



Description

Welcome to Manor House Way, Isleworth - a charming location for this delightful three-bedroom terraced house. Situated in a quiet area, this property boasts a separate kitchen, generous reception room, and a downstairs W.C. The house is in excellent condition, offering a comfortable and inviting living space for you to call home.

With a courtyard garden, you can enjoy some outdoor tranquillity. The property also provides a garage for one vehicle, ensuring you have a secure place to park.

Whether you're looking for a peaceful retreat or a lovely family home, this terraced house ticks all the boxes. Don't miss out on the opportunity to make this wonderful property your own in the heart of Isleworth.

Situated in a delightful residential area, within close proximity of The River Thames and the beautiful grounds of Syon House and Syon Park. The H37 hopper bus takes you to St Margaret's and Richmond on a regular basis.





Manor House Way

Approx. Gross Internal Floor Area
99.1 Sq M - 1067 Sq Ft

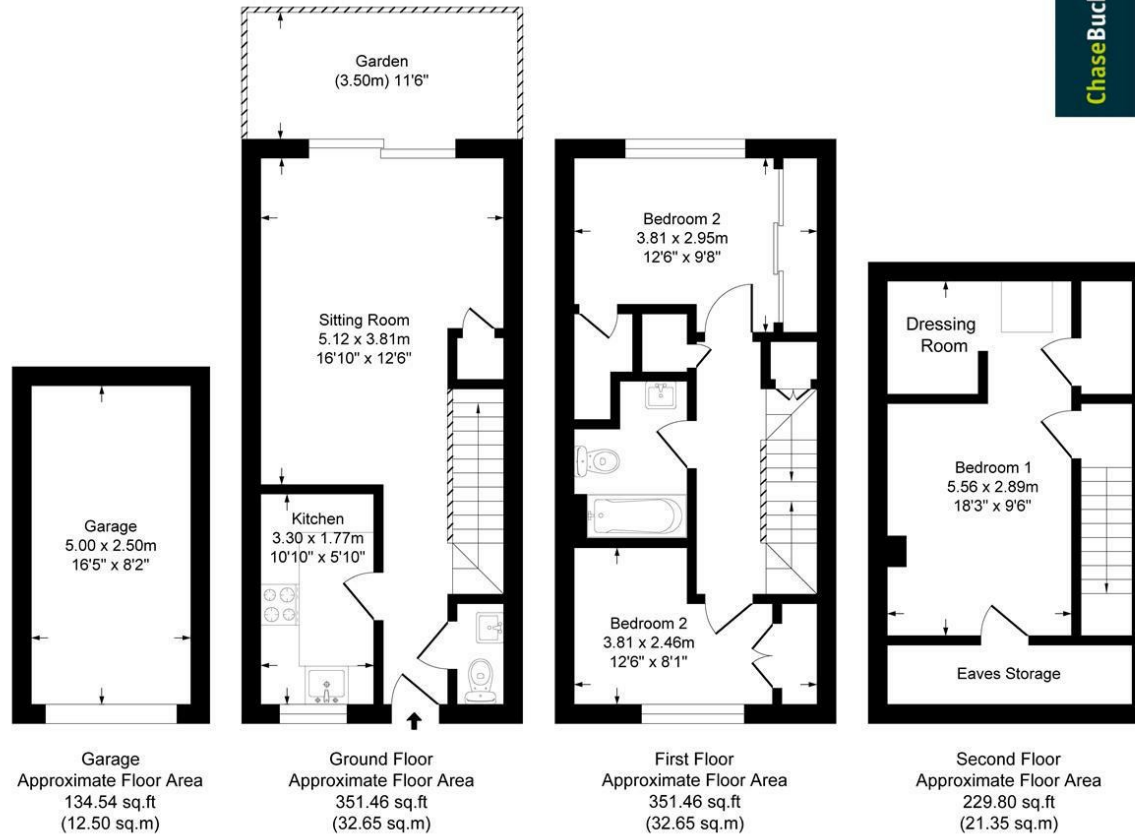


Illustration for identification purposes only, measurements are approximate, not to scale.

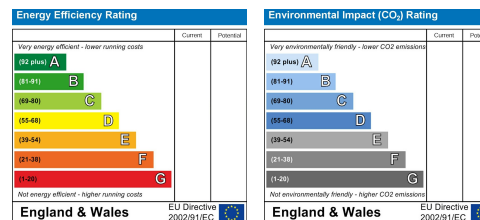
For more information or to book a viewing, please contact:

020 8758 1755

isleworth@chasebuchanan.london

480 London Road, TW7 4DE

Care has been taken in the preparation of these particulars, however, their accuracy is not guaranteed and they do not form part of any contract. Measurements stated must be considered maximum.



ChaseBuchanan