



**Union Lane  
Isleworth**

£385,000

**ChaseBuchanan**



## Key Features

- Viewings accompanied by Chase Buchanan
- Two bedroom spacious apartment
- Excellent condition throughout
- Two bathrooms
- On site parking
- Balcony with super views



## Description

Welcome to this charming two-bedroom, two bathroom second-floor apartment located on Union Lane boasting spacious living with lift service in the picturesque Isleworth.

This purpose-built flat boasts an open plan kitchen/reception room, boasting modern fittings, a comfy living space with a generous balcony offering gorgeous views, where you can enjoy a cup of tea while soaking in the surroundings.

This apartment is in excellent condition, ensuring a hassle-free move-in experience. The two bathrooms provide convenience and privacy for you and your guests.

Don't miss the opportunity to make this delightful flat your new home. Contact us today to arrange a viewing and envision yourself living in this wonderful space in Isleworth.

Union Lane is a popular modern development situated within half a mile from Syon Lane Station with its links to London Waterloo. The green open space of Syon Park is 50 feet away and the River Thames with its towpath walks into Richmond is only 0.4 miles away.







**TW7**

Approx. Gross Internal Floor Area  
71.9 Sq M - 774 Sq Ft

**ChaseBuchanan**

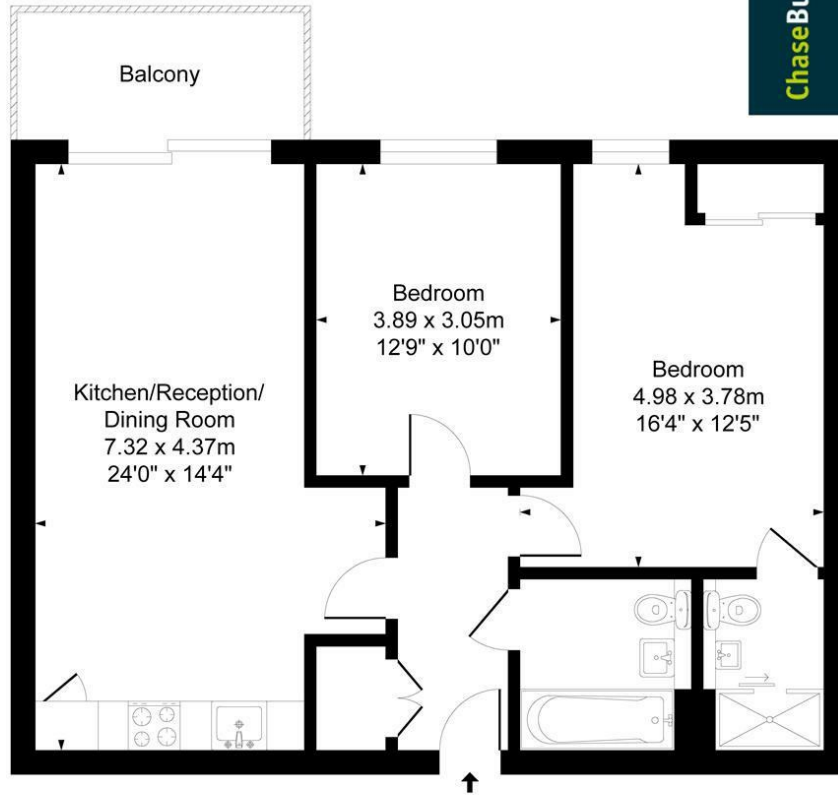


Illustration for identification purposes only, measurements are approximate, not to scale.  
Produced By Esjay Property Marketing

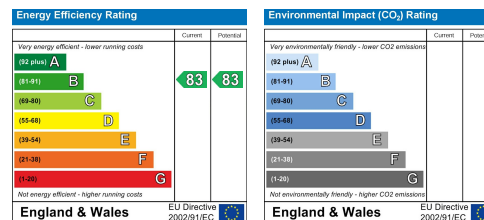
For more information or to book a viewing, please contact:

**020 8758 1755**

isleworth@chasebuchanan.london

480 London Road, TW7 4DE

Care has been taken in the preparation of these particulars, however, their accuracy is not guaranteed and they do not form part of any contract. Measurements stated must be considered maximum.



**ChaseBuchanan**