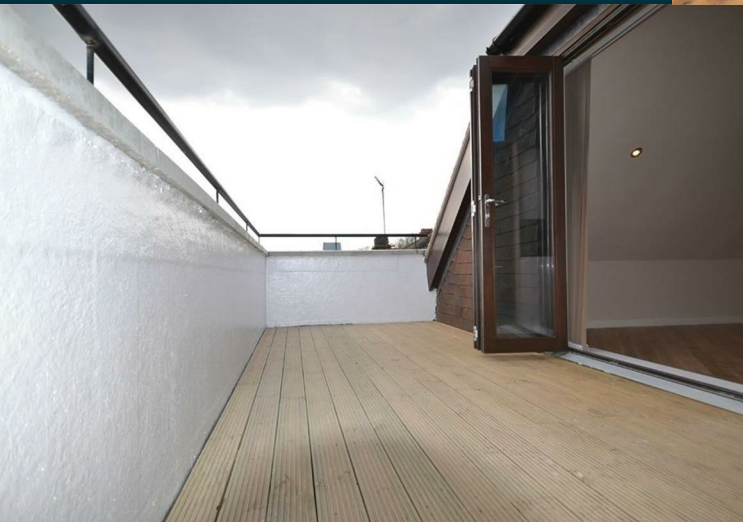
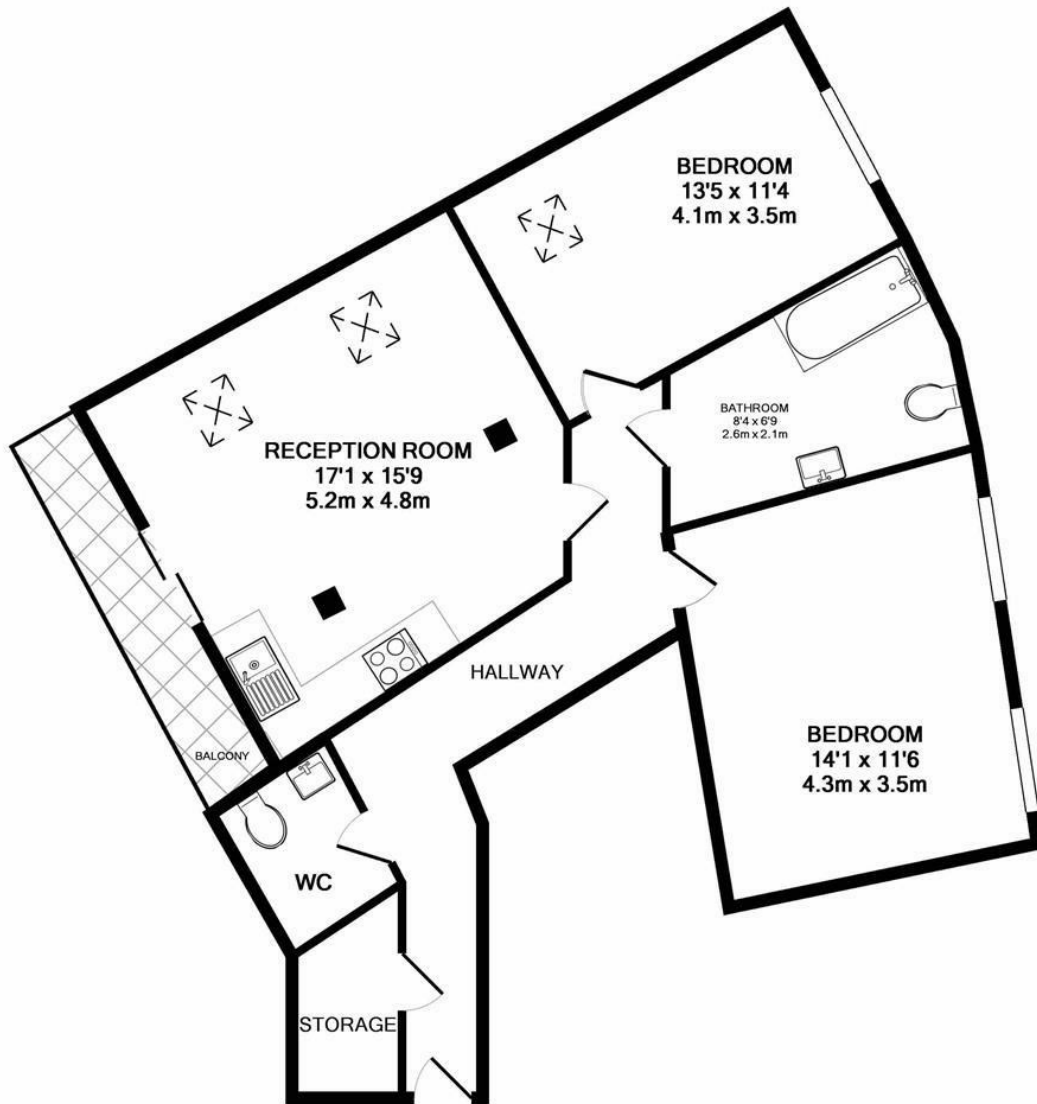


**St Johns Road
Isleworth
TW7 6NB**

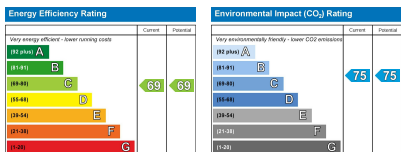
£1,650 PCM

ChaseBuchanan





TOTAL APPROX. FLOOR AREA 805 SQ.FT. (74.8 SQ.M.)
 Made with Metropix ©2018



- Viewings Accompanied by Chase Buchanan
- Two Double Bedrooms
- Penthouse Apartment
- Large Balcony
- Hardwood Floor
- Underfloor Heating
- Close to Isleworth Mainline Station
- Additional £45 Charge for Communal Heat Pump
- Council Tax Band A
- EPC C

Set in a great location and ideal for the busy commuter with Isleworth station moments away and presented in excellent condition, a spacious two bedroom top floor apartment.

This beautiful home is perfect for anyone looking for something immaculate and clean which offers space and comfortable living throughout.

Features include a spacious open plan kitchen and lounge, the ideal place to wine and dine your family and friends or somewhere you and your partner can put your feet up for the evening after a long day at work.

Further benefits include two double bedrooms, modern bathroom with additional w/c, wooden flooring throughout, ample storage and a private balcony.

This is a great home for anyone looking to be within a stone's throw of all the local amenities and is the perfect property for a professional couple or single tenant. Viewings are highly advised to appreciate the finish and size on offer here.

***There is an additional £45 charge for the heat pump of the building to provide hot water

Chase Buchanan are bonded members of ARLA Propertymark

For more information or to book a viewing, please contact:

020 8758 1755

ChaseBuchanan

7 Odeon Parade, 480 London Road, Isleworth, Middlesex, TW7 4DE

Care has been taken in the preparation of these particulars, however, their accuracy is not guaranteed and they do not form part of any contract. Measurements stated must be considered maximum.