



**Chase**Buchanan

# St. Marys Crescent, Osterley

## £1,250,000

- Viewings accompanied by Chase Buchanan
- Four bedroom semi-detached Edwardian property
- Character features throughout
- Generous mature gardens with patio area
- Excellent condition
- Side access
- Close to Osterley tube station and Isleworth mainline stations
- End of chain

Welcome to St. Marys Crescent, Isleworth - a charming location that sets the scene for this exquisite Edwardian semi-detached property. Built in 1902, this period house boasts classic features that will transport you back in time while offering all the modern comforts you desire.

As you step inside, you are greeted by not one, but two elegant reception rooms, perfect for entertaining guests or simply unwinding after a long day. With four spacious bedrooms, there is ample space for the whole family to relax and recharge.

The property features two bathrooms and an additional WC on the ground floor, ensuring convenience and comfort for all residents.

One of the highlights of this stunning property is the large, beautiful garden. Imagine lazy summer days spent basking in the sun or hosting al fresco gatherings in this picturesque outdoor space. Additionally, the ample off-road parking adds a practical touch to this dreamy abode.

St. Marys Crescent is conveniently located in Osterley village with delightful restaurants and shops and is within walking distance of Osterley Park and several excellent schools. Don't miss the opportunity to make this Edwardian gem your own. With its timeless charm, spacious interior, and delightful garden, this property on St. Marys Crescent is sure to capture your heart.

This property has an energy performance rating of D







For more information or to book a viewing, please contact:

**020 8758 1755**

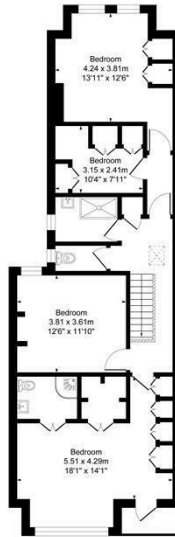
Chase Buchanan Isleworth Sales  
7 Odeon Parade, 480 London Road, Isleworth,  
Middlesex, TW7 4DE

**ChaseBuchanan**



Ground Floor  
Approximate Floor Area  
1156.08 sq ft  
(107.47 sq m)

St Mary's Crescent TW7  
Approx. Gross Area: 2099 sq ft  
194.0 Sq M - 2099 Sq Ft



First Floor  
Approximate Floor Area  
932.94 sq ft  
(86.67 sq m)

Illustration for identification purposes only, measurements are approximate, not to scale.  
Produced By Eijay Property Marketing

Care has been taken in the preparation of these particulars, however, their accuracy is not guaranteed and they do not form part of any contract. Measurements stated must be considered maximum.



**ChaseBuchanan**