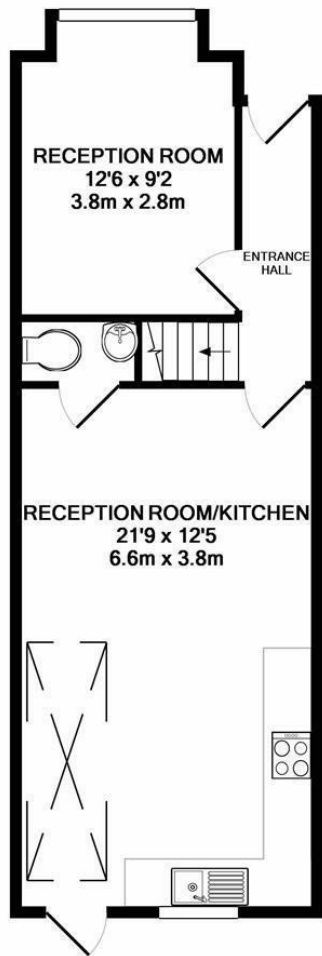


**Linkfield Road  
Isleworth Village  
TW7 6QP**

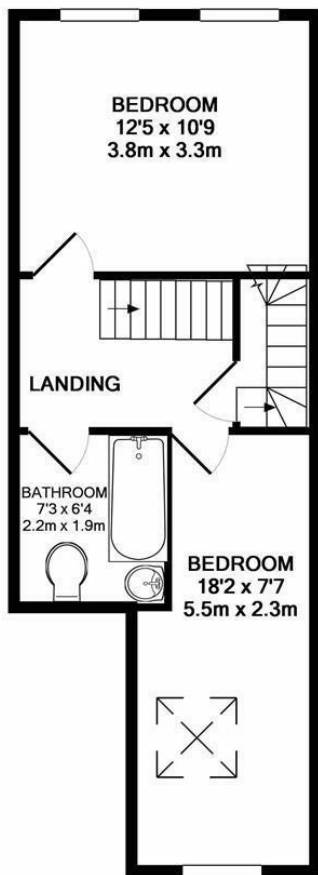
£2,500 PCM

**ChaseBuchanan**

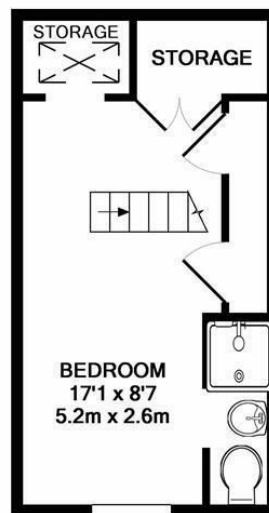




GROUND FLOOR  
APPROX. FLOOR  
AREA 445 SQ.FT.  
(41.3 SQ.M.)



1ST FLOOR  
APPROX. FLOOR  
AREA 387 SQ.FT.  
(35.9 SQ.M.)



2ND FLOOR  
APPROX. FLOOR  
AREA 216 SQ.FT.  
(20.1 SQ.M.)

TOTAL APPROX. FLOOR AREA 1048 SQ.FT. (97.3 SQ.M.)  
Made with Metropix ©2017

Energy Efficiency Rating	Current	Desired
Very energy efficient - lower running costs		
A		
B		
C		
D		
E		
F		
G		

Environmental Impact (CO <sub>2</sub> ) Rating	Current	Desired
Very environmentally friendly - lower CO <sub>2</sub> emissions		
A		
B		
C		
D		
E		
F		
G		

Care has been taken in the preparation of these particulars, however, their accuracy is not guaranteed and they do not form part of any contract. Measurements stated must be considered maximum.

- Viewings Accompanied by Chase Buchanan
- Two Bathrooms
- Open Plan Kitchen
- Split Over Three Floors
- Council Tax E
- Three Bedrooms
- Modern
- Newly Refurbished
- Private Garden
- EPC D

Beautifully presented three-bedroom mid-terraced house on the sought-after Linkfield Road. The property features two reception rooms, with the main reception boasting an open-plan kitchen. The reception/diner has been recently refurbished to a high standard and includes a modern fitted kitchen.

On the first floor, you will find the spacious master bedroom with built-in wardrobes. Adjacent to the master bedroom is a newly designed, modern family bathroom.

The second bedroom on this floor also features a built-in wardrobe and offers generous space.

The second floor houses the third bedroom, which includes convenient storage in the eaves and an en suite shower room.

Early viewings are highly recommended.

For more information or to book a viewing, please contact:

020 8758 1755

**ChaseBuchanan**

7 Odeon Parade, 480 London Road, Isleworth, Middlesex, TW7 4DE