

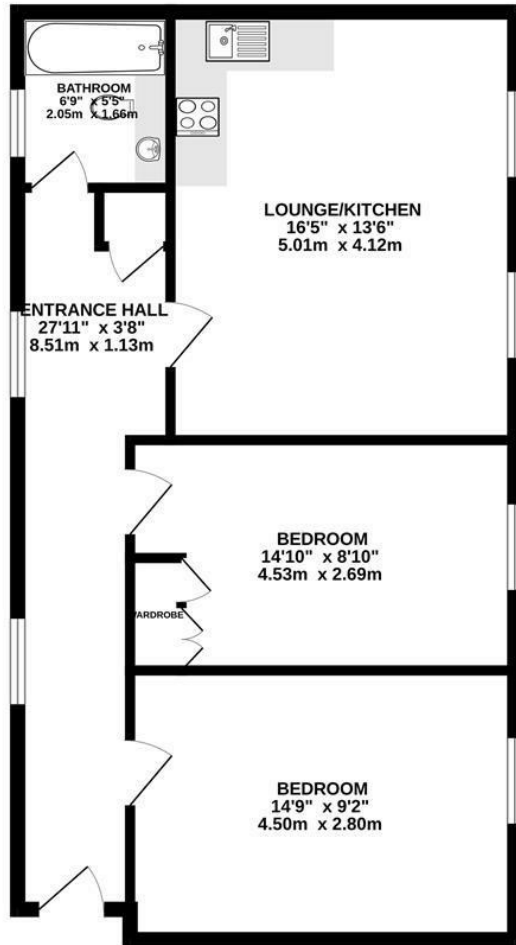
**Borough Road
Isleworth
TW7 5FJ**

£1,875

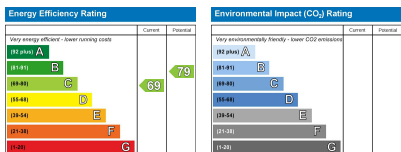
ChaseBuchanan



FIRST FLOOR
676 sq.ft. (62.8 sq.m.) approx.



TOTAL FLOOR AREA : 676 sq.ft. (62.8 sq.m.) approx.
Produced solely for Chase Buchanan
Made with Metropro ©2023



- Two bedrooms
- Presented in good condition
- Gated development
- First floor apartment
- One allocated parking
- EPC rating C

Set in this stunning grade II listed building, a beautiful and modern two bedroom conversion apartment.

Lancaster House is historically the old Brunel university site and the development now boasts stunning architecture and communal gardens all securely set behind gates.

This lovely home benefits from numerous period features, most notably the phenomenal ceiling height throughout.

Features include a bright open plan reception / kitchen, an ideal place to entertain your family and friends while the keen cook prepares something delicious.

Further benefits include two double bedrooms, one allocated parking, neutral colors throughout, and a modern bathroom.

This is a great property set in a highly desirable location and offers easy access to Isleworth station and Osterley underground station. An ideal home for a professional couple or a single tenant and an early viewing is highly advised.

Chase Buchanan are bonded members of ARLA Propertymark

For more information or to book a viewing, please contact:

020 8758 1755

ChaseBuchanan

7 Odeon Parade, 480 London Road, Isleworth, Middlesex, TW7 4DE

Care has been taken in the preparation of these particulars, however, their accuracy is not guaranteed and they do not form part of any contract. Measurements stated must be considered maximum.