



**Talbot Road  
Old Isleworth**  
£600,000  
**ChaseBuchanan**



## Key Features

- Viewings accompanied by Chase Buchanan
- Two bedroom ground floor maisonette
- River access with mooring
- Spacious accommodation
- Stunning gardens
- Off road parking and garage
- Quiet location
- No onward chain
- New lease subject to terms
- St Margaret's borders

## Description

Chase Buchanan is delighted to offer this breathtaking two-bedroom ground-floor maisonette to the market, perfectly positioned to embrace the tranquil beauty of riverside living, boasting exclusive river access with private mooring. Nestled within a picturesque setting, this residence offers more than just a home; it presents a lifestyle of luxury and convenience.

As you enter this elegant property, you are greeted by an inviting ambiance, where modern sophistication seamlessly merges with comfort and style. The spacious living area exudes warmth, featuring large windows that flood the space with natural light while offering glorious views over the rear gardens.

The well-appointed handmade kitchen is a culinary haven, featuring a substantial island with a wine rack, ample storage, inspiring culinary creations, and delightful gatherings with loved ones.









# Talbot Road TW7

Approx. Gross Internal Floor Area  
121.7 Sq M - 1311 Sq Ft

Chase Buchanan

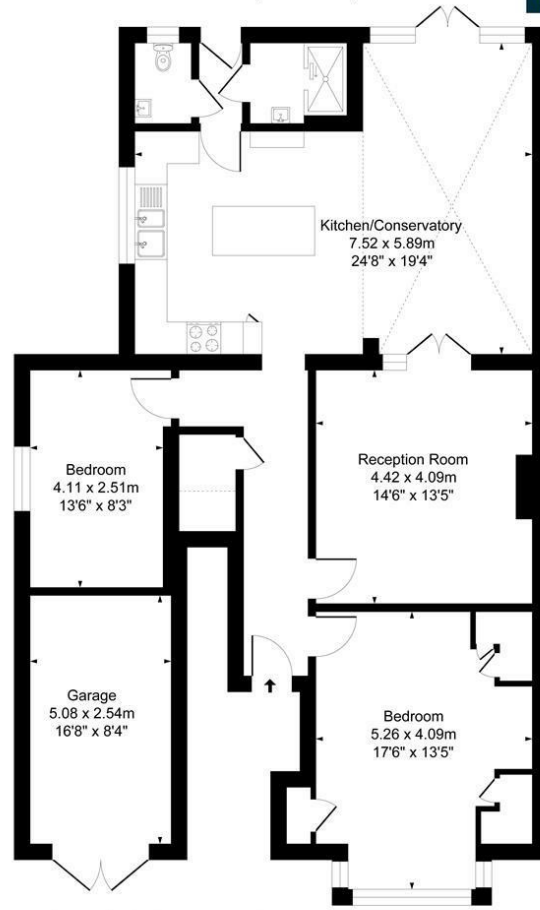


Illustration for identification purposes only, measurements are approximate, not to scale.  
Produced By Esjay Property Marketing

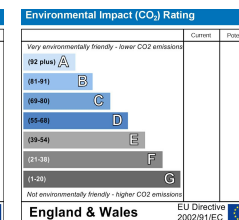
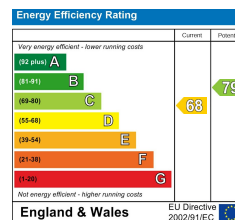
For more information or to book a viewing, please contact:

**020 8758 1755**

isleworth@chasebuchanan.london

480 London Road, TW7 4DE

Care has been taken in the preparation of these particulars, however, their accuracy is not guaranteed and they do not form part of any contract. Measurements stated must be considered maximum.



**Chase Buchanan**