



**Southland Way  
Hounslow**

£615,000

**ChaseBuchanan**

## Key Features

- Viewings accompanied by Chase Buchanan
- Bay fronted 1930's family home
- Four bedrooms
- Open plan reception/dining room
- Conservatory
- Drive and double garage via rear access
- Quiet cul-de-sac
- Close to transport links



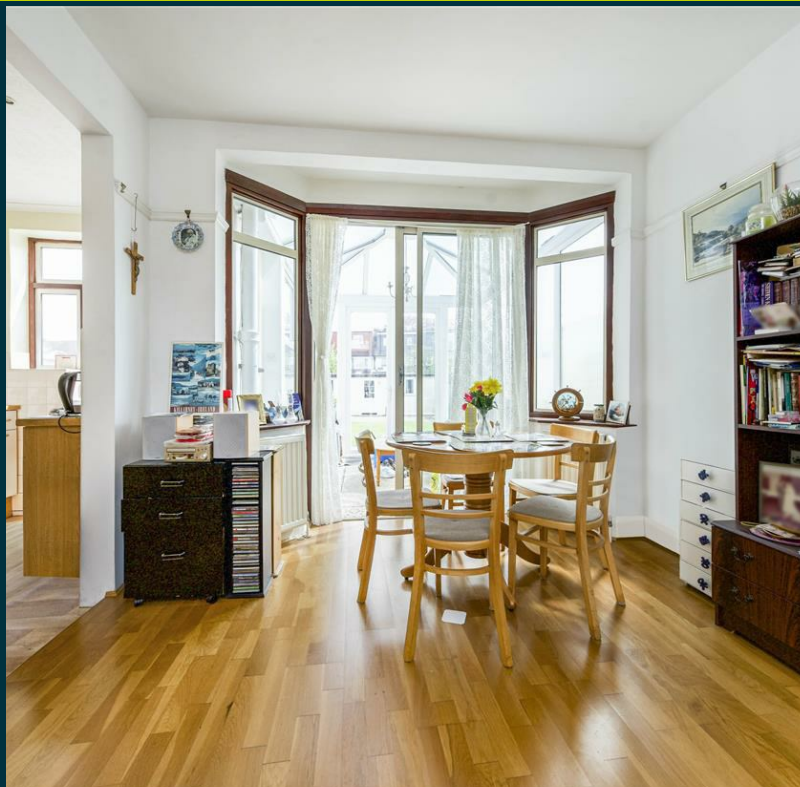
## Description

An immaculately presented bay-fronted four-bedroom family home located in this quiet cul-de-sac on the Hounslow/Whitton borders.

The accommodation comprises a bright and spacious open plan reception/dining room, fitted kitchen, and a conservatory on the ground floor, whilst the first floor provides three generous-sized bedrooms and a family bathroom. The second floor boasts a fourth bedroom, a shower room, and eaves storage. Further benefits include a driveway for two cars and a double garage via a rear service road.

Southland Way is well placed for access to Hounslow BR mainline station, Whitton BR mainline station, and Hounslow East and Hounslow Central tube (Piccadilly line), whilst the shops and amenities of Hounslow, Whitton and Isleworth are within easy reach. The area is also renowned for its excellent selection of primary and secondary schools.

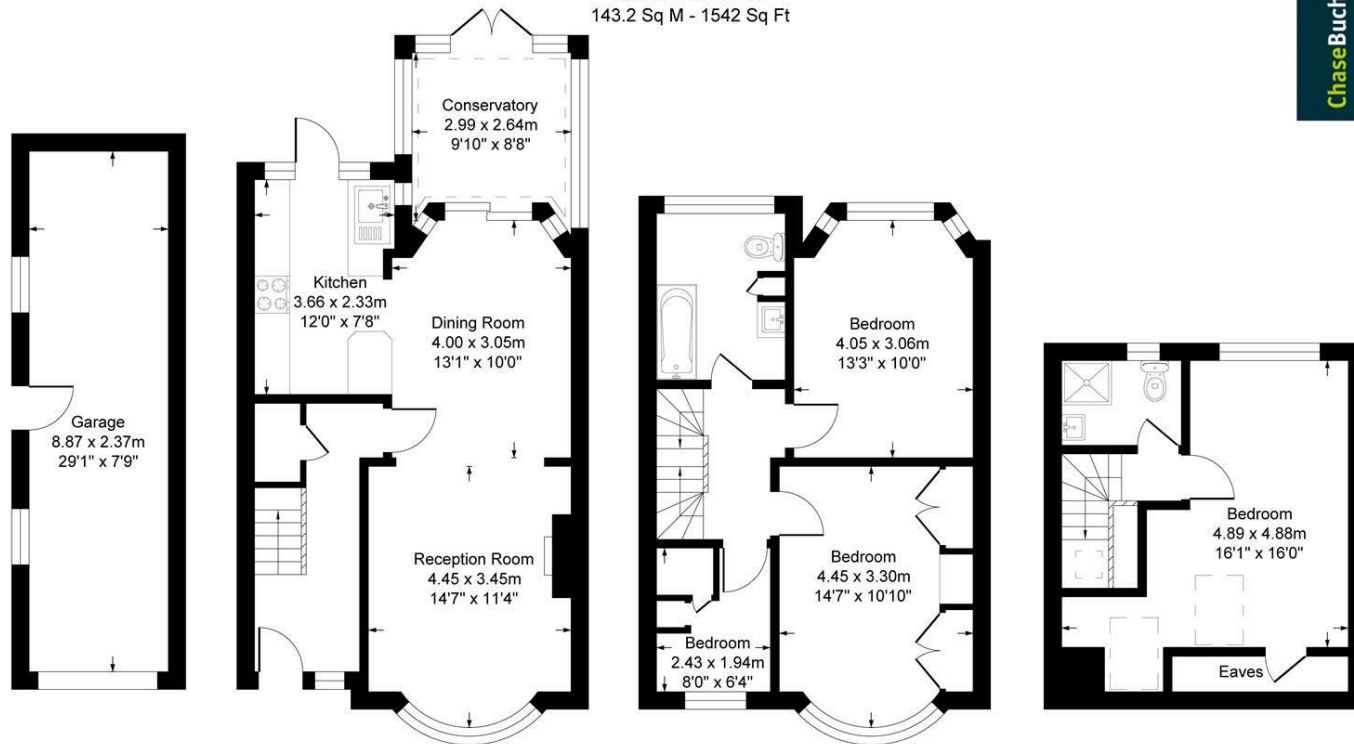




# Southland Way TW3

Approx. Gross Internal Floor Area  
143.2 Sq M - 1542 Sq Ft

ChaseBuchanan



Garage  
Approximate Floor Area  
226.25 sq.ft  
(21.02 sq.m)

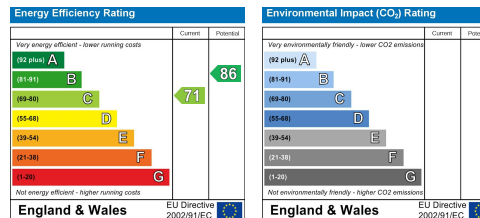
Ground Floor  
Approximate Floor Area  
572.85 sq.ft  
(53.22 sq.m)

First Floor  
Approximate Floor Area  
472.32 sq.ft  
(43.88 sq.m)

Second Floor  
Approximate Floor Area  
270.81 sq.ft  
(25.16 sq.m)

Illustration for identification purposes only, measurements are approximate, not to scale.  
Produced By Esjay Property Marketing

Care has been taken in the preparation of these particulars, however, their accuracy is not guaranteed and they do not form part of any contract. Measurements stated must be considered maximum.



For more information or to book a viewing, please contact:

**020 8758 1755**

isleworth@chasebuchanan.london

480 London Road, TW7 4DE

**ChaseBuchanan**