



**Queens Terrace  
Old Isleworth**

£680,000

**ChaseBuchanan**

## Key Features

- Viewings accompanied by Chase Buchanan
- Period three bedroom terraced property
- Large roof top terrace
- Immaculately presented throughout
- Quiet cul-de-sac location
- Principal bedroom with Juliet balcony and fitted wardrobes
- Stunning bathroom with underfloor heating
- Double doors leading out into garden area

## Description

Welcome to this stunning three-bedroom Victorian end-terrace property boasting spacious accommodation, beautifully presented and located on the highly desirable Queens Terrace.

As you step inside, you'll be greeted by a modern interior with some timeless traditional features and all presented in immaculate condition, offering a bright and airy feel throughout. The spacious accommodation provides plenty of room for your family to grow and make lasting memories.

One of the highlights of this property is the roof terrace, where you can enjoy al fresco dining or simply unwind while taking in the views of the quiet surroundings.

Situated in a peaceful location, this house offers a tranquil escape from the hustle and bustle of everyday life, yet it is still conveniently located close to amenities, schools, and transport links.

Don't miss the opportunity to make this beautiful house your home. Contact us today to arrange a viewing and experience the charm and comfort this property has to offer.

Queens Terrace is ideally located within yards of Old Isleworth Village and the River Thames, there are great local schools nearby as well as being walking distance to St Margarets and Richmond via the tow path.





# Queens Terrace TW7

Approx. Gross Internal Floor Area  
84.4 Sq M - 909 Sq Ft

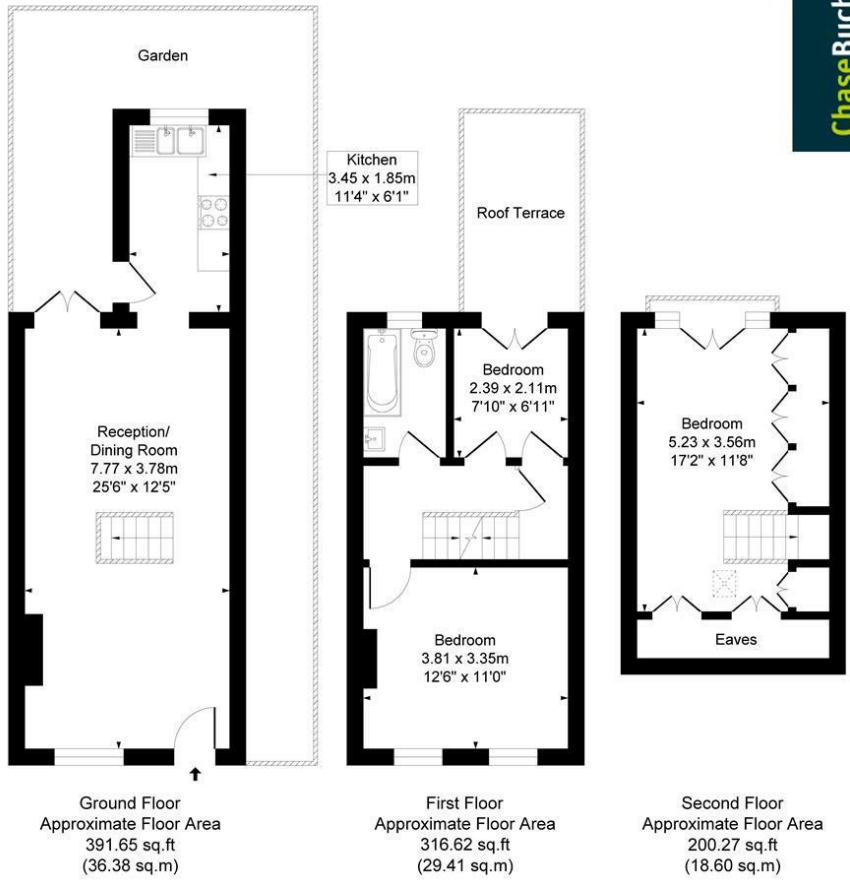
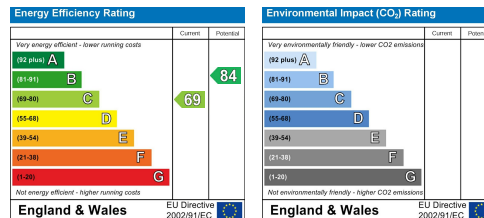


Illustration for identification purposes only, measurements are approximate, not to scale.  
Produced By Esjay Property Marketing

Care has been taken in the preparation of these particulars, however, their accuracy is not guaranteed and they do not form part of any contract. Measurements stated must be considered maximum.



For more information or to book a viewing, please contact:

**020 8758 1755**

isleworth@chasebuchanan.london

480 London Road, TW7 4DE

**ChaseBuchanan**