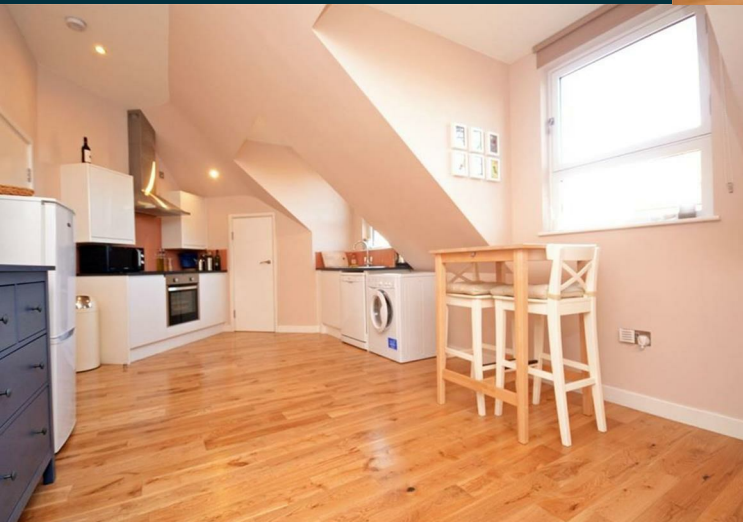


**Bambri Court
Isleworth
TW7 6NB**

£1,375 PCM

ChaseBuchanan



- Viewings Accompanied by Chase Buchanan
- One double bedroom apartment
- Hardwood flooring throughout
- Energy efficient underfloor heating
- Modern bathroom
- Open plan kitchen/lounge
- Close to Isleworth station
- EPC rating band C

Set in a fantastic location with easy access to Isleworth station, bus links and shops, a beautiful and modern one double bedroom apartment.

This property was Designed and built by an independent developer and this impressive eco-friendly apartment offers generously proportioned accommodation throughout. In most purpose built homes you would expect the need for more space, but not here, the apartment is a great size and the piece de resistance for this home is the fantastic open plan living space with hardwood flooring and under floor heating.

With a modern bathroom and a double bedroom you truly get a flat that ticks all the right boxes and what really caps things off is the property is set in the heart of Isleworth village. Viewings are highly recommended to appreciate the quality on offer here.

****Additional Charge of £45.00 Applies for the Heat Pump.****

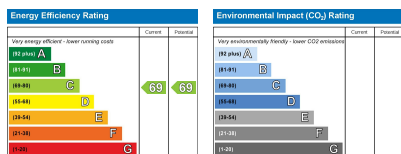
Chase Buchanan are bonded members of ARLA PropertyMark.

For more information or to book a viewing, please contact:

020 8758 1755

ChaseBuchanan

7 Odeon Parade, 480 London Road, Isleworth, Middlesex, TW7 4DE



Care has been taken in the preparation of these particulars, however, their accuracy is not guaranteed and they do not form part of any contract. Measurements stated must be considered maximum.