



**Sidmouth Avenue
Isleworth**

£729,000

ChaseBuchanan

Key Features

- Viewings accompanied by Chase Buchanan
- Completely refurbished four bedroom property
- Off road parking for two cars
- Open plan living area
- Spacious living
- Short walk to Isleworth train station
- Catchment area for local schools
- 20 minute walk to Osterley tube station



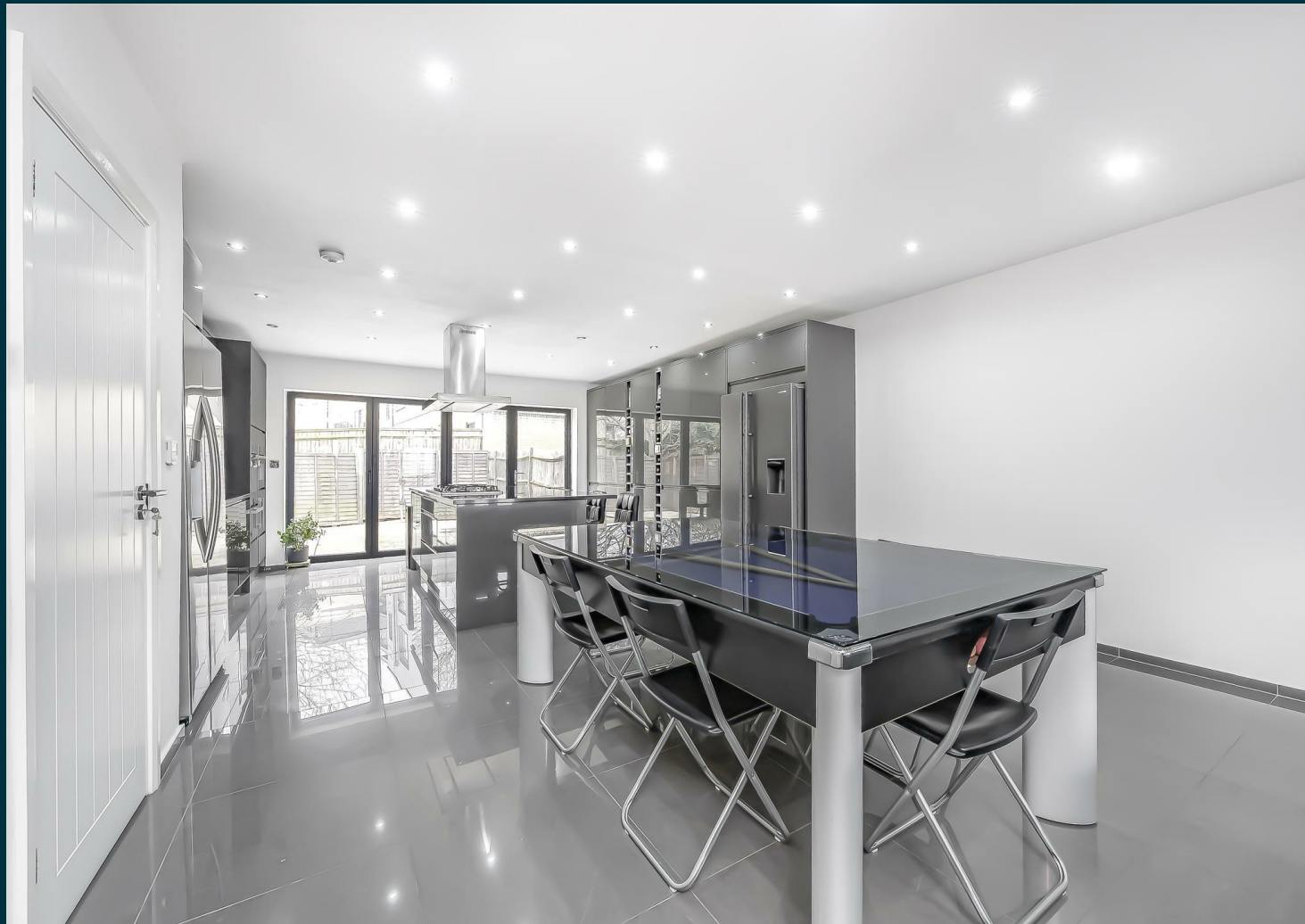
Description

An exceptionally well-presented modern family home.

The ground floor comprises an expansive bright open plan living/kitchen/dining room with bi-folding doors onto a rear garden, there is also a guest WC and cloakroom. The first floor offers two large double bedrooms with fitted wardrobes, a third bedroom/office space, and a family bathroom. The second floor offers a large master bedroom with an en-suite shower room and generous eaves storage space.

The property benefits from underfloor heating to the ground floor/bathrooms and a Nest-controlled Megaflow heating system. There is also CAT5 cabling, LED lighting, and a full alarm/CCTV security system fitted.

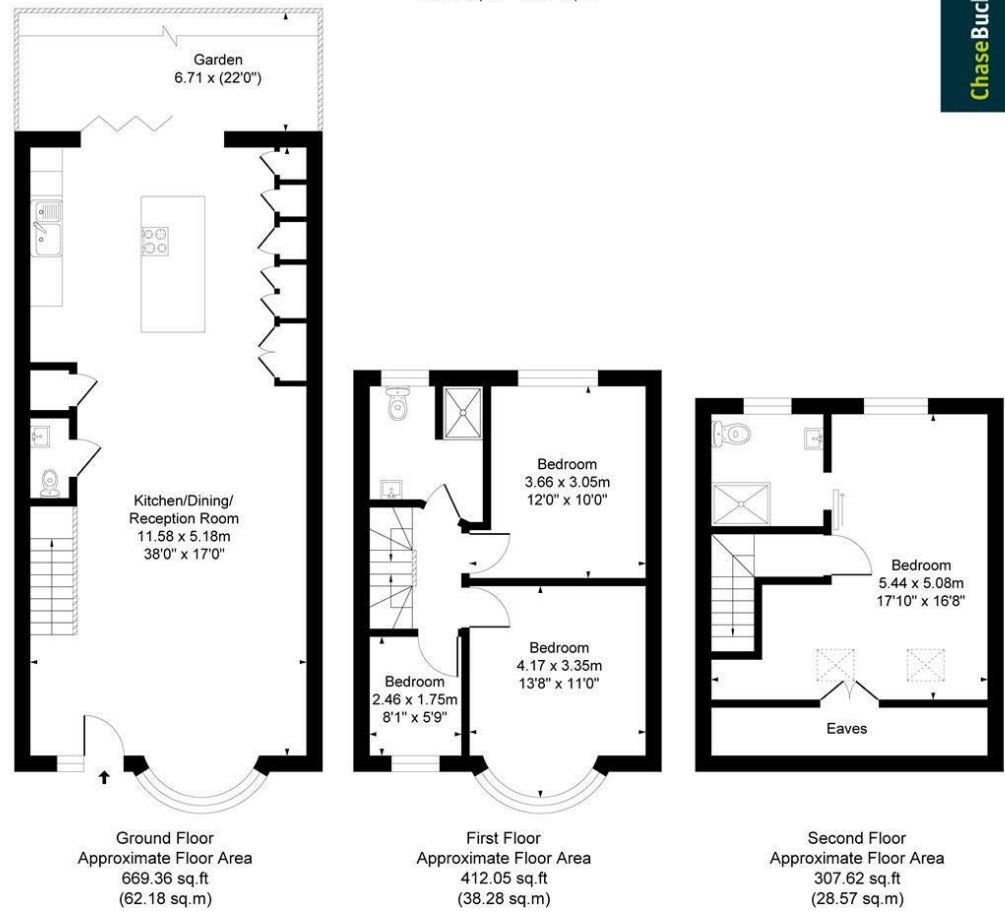
Sidmouth Avenue is located within close proximity (6 minutes walk) of Isleworth BR station (37 mins to London Waterloo) and is well placed for some highly regarded schools. Osterley tube station (Piccadilly Line) is also within walking distance.





Sidmouth Road TW7

Approx. Gross Internal Floor Area
129.0 Sq M - 1389 Sq Ft



Ground Floor
Approximate Floor Area
669.36 sq.ft
(62.18 sq.m)

First Floor
Approximate Floor Area
412.05 sq.ft
(38.28 sq.m)

Second Floor
Approximate Floor Area
307.62 sq.ft
(28.57 sq.m)

Illustration for identification purposes only, measurements are approximate, not to scale.
Produced By Esjay Property Marketing

For more information or to book a viewing, please contact:

020 8758 1755

isleworth@chasebuchanan.london

480 London Road, TW7 4DE

ChaseBuchanan

Care has been taken in the preparation of these particulars, however, their accuracy is not guaranteed and they do not form part of any contract. Measurements stated must be considered maximum.

