



**Great West Road  
Isleworth**

£339,950

**ChaseBuchanan**

### Key Features

- Viewings accompanied by Chase Buchanan.
- Ground floor flat
- Two double bedrooms
- 125 years lease
- Moments from Osterley tube station
- Ideal first time buy or buy to let investment
- Residents parking
- Chain free

### Description

This two double bedroom, ground floor apartment is located in a sought after development in Osterley. The property comprises a large reception room, a separate kitchen, two double bedrooms and a family bathroom. Further benefits include a 125 year lease, residents parking, communal gardens and no onward chain.

Osterley Court is a development situated off the Great West Road opposite Osterley Tube Station, which is ideally placed for access in and out of the city, with Syon BR Mainline Station also close by. The shops and amenities of Osterley, Isleworth and Richmond are also within easy reach.

To arrange a viewing, please call Chase Buchanan.





# Osterley Court

Approx. Gross Internal Floor Area  
63.2 Sq M - 681 Sq Ft

ChaseBuchanan

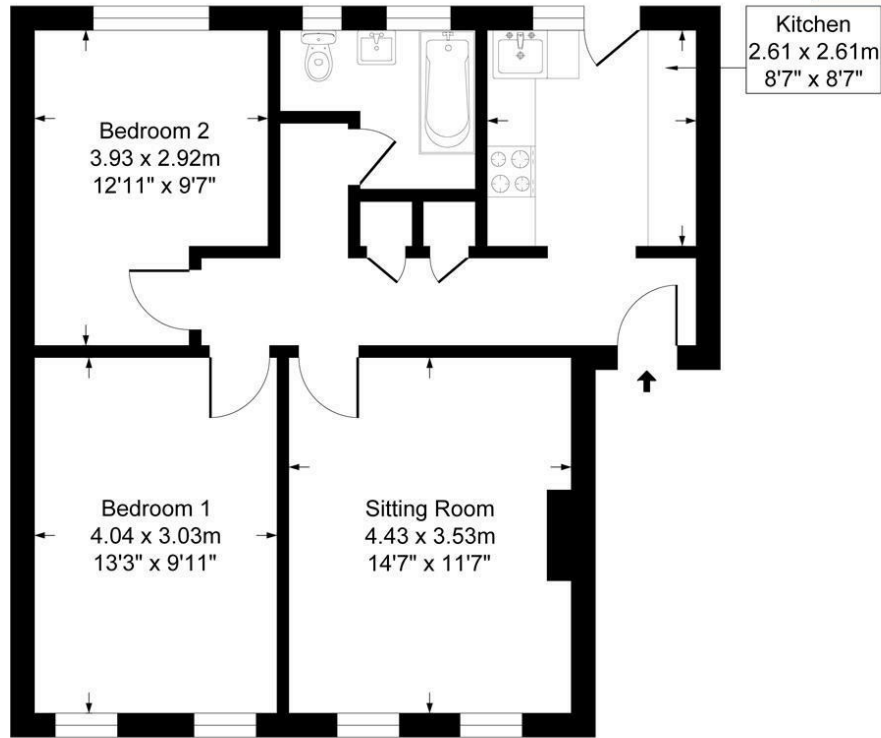


Illustration for identification purposes only, measurements are approximate, not to scale.

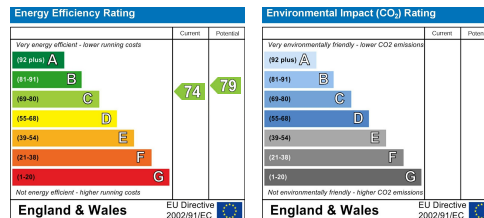
For more information or to book a viewing, please contact:

**020 8758 1755**

isleworth@chasebuchanan.london

480 London Road, TW7 4DE

Care has been taken in the preparation of these particulars, however, their accuracy is not guaranteed and they do not form part of any contract. Measurements stated must be considered maximum.



**ChaseBuchanan**