



**Stags Way  
Osterley**

£300,000

**ChaseBuchanan**

## Key Features

- Viewings accompanied by Chase Buchanan
- One bedroom apartment
- Quiet location
- 0.8 mile to Osterley tube station
- 0.6 mile to Syon Lane train station
- Three parking spaces



## Description

Welcome to Stags Way, Osterley- a charming location that could be the perfect setting for your new home! This delightful one-bedroom, one-bathroom flat offers a cosy yet spacious accommodation, ideal for a single person or a couple looking for a peaceful retreat.

Situated in a purpose-built block, this lovely apartment boasts a reception room that is perfect for relaxing or entertaining guests. The property also features parking space for not just one, but three vehicles - a rare find in many city locations, making it convenient for those with multiple vehicles or visitors.

Nestled in a quiet location, you can enjoy the tranquillity of the surroundings while still being within easy reach of local amenities and transport links. Whether you're a first-time buyer, downsizing, or looking for a buy-to-let investment, this property offers great potential.

Located in quiet cul-de-sac location, within close proximity to Tesco Superstore, Osterley Underground Station, Syon Lane Mainline Station and provides easy access to A4/M4 motor way networks.





# Stags Way TW7

Approx. Gross Internal Floor Area  
47.9 Sq M - 516 Sq Ft

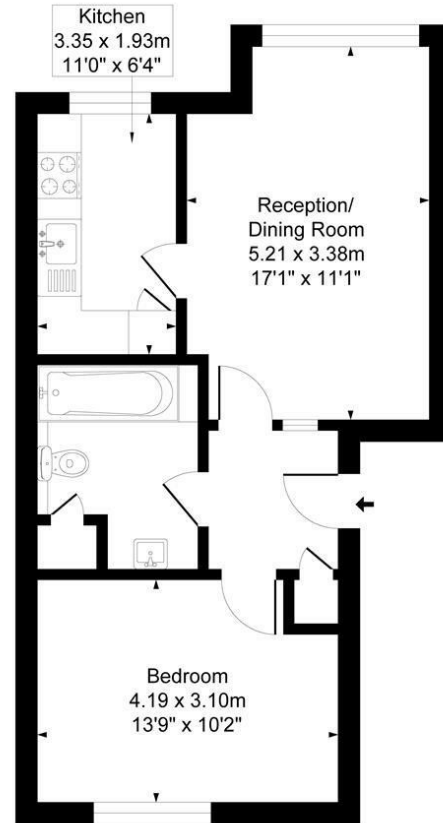
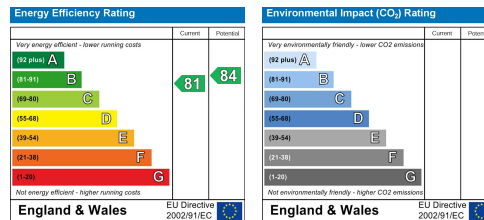


Illustration for identification purposes only, measurements are approximate, not to scale.  
Produced By Esjay Property Marketing

Care has been taken in the preparation of these particulars, however, their accuracy is not guaranteed and they do not form part of any contract. Measurements stated must be considered maximum.



For more information or to book a viewing, please contact:

**020 8758 1755**

isleworth@chasebuchanan.london

480 London Road, TW7 4DE

**ChaseBuchanan**