

Odeon Parade London  
Road  
Isleworth  
TW7 4RL

£325,000

ChaseBuchanan



# Odeon Parade TW7

Approx. Gross Internal Floor Area  
62.7 Sq M - 675 Sq Ft

ChaseBuchanan

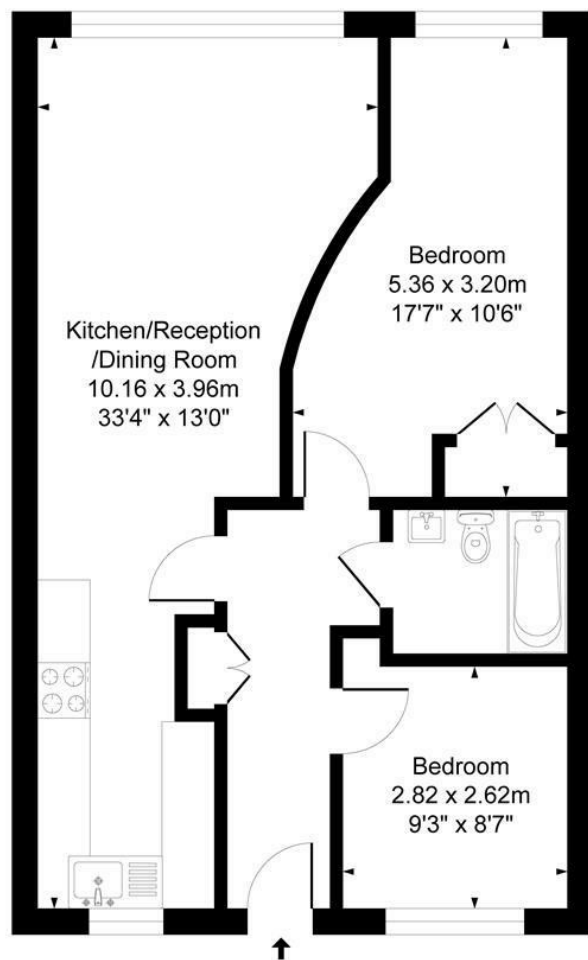
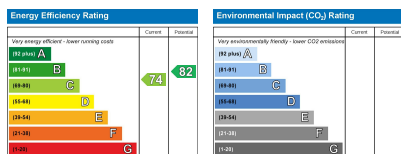


Illustration for identification purposes only, measurements are approximate, not to scale.  
Produced By Esjay Property Marketing



Care has been taken in the preparation of these particulars, however, their accuracy is not guaranteed and they do not form part of any contract. Measurements stated must be considered maximum.

- Viewings accompanied by Chase Buchanan
- Two double bedrooms
- 978 years lease
- Secure gated development
- Allocated parking
- Close to Isleworth Station

Welcome to this charming two-bedroom apartment located on London Road in the picturesque town of Isleworth. Situated in a modern building, this first-floor apartment boasts two spacious double bedrooms, perfect for a small family or professionals looking for extra space.

One of the standout features of this property is its secure lift serviced gated development, providing peace of mind and a sense of exclusivity. Additionally, having an allocated parking space in the bustling area of Isleworth is a rare find, making this apartment even more desirable.

Conveniently located just moments away from Isleworth mainline station, commuting to work or exploring the vibrant city of London couldn't be easier. With a lease of 978 years, this apartment offers long-term security and stability for its new owners.

Don't miss out on the opportunity to own this delightful apartment in a sought-after location. Contact us today to arrange a viewing and take the first step towards making this property your new home.

For more information or to book a viewing, please contact:

020 8758 1755

ChaseBuchanan

7 Odeon Parade, 480 London Road, Isleworth, Middlesex, TW7 4DE