



**Woodland Gardens
Isleworth**

£600,000

ChaseBuchanan

Key Features

- Viewings accompanied by Chase Buchanan
- Three bedroom period property
- Quiet location
- Potential to develop (STPP)
- Double garage
- Private garden
- Rear access road
- No onward chain

Description

Chase Buchanan is delighted to offer to the market this untouched, period three-bedroom semi-detached family home boasting character features, including original parquet flooring, decorative floor tiles and high ceilings.

The property comprises an attractive front garden, a spacious entrance hall, a living room, dining room, kitchen, downstairs W.C. and under-stairs storage.

Upstairs are two generous double bedrooms, one large single bedroom, a family bathroom and access to loft space.

The rear garden is mainly lawn with mature bushes and shrubs including a gorgeous Wisteria and a double garage with rear access via the back road.

Located on Woodland Gardens this property is ideal for access to Isleworth mainline train station, the amenities of Isleworth village and some great schools. The development also has communal facilities open to all residents of The Woodlands, including a tennis court, parkland and a community centre (WERFA).

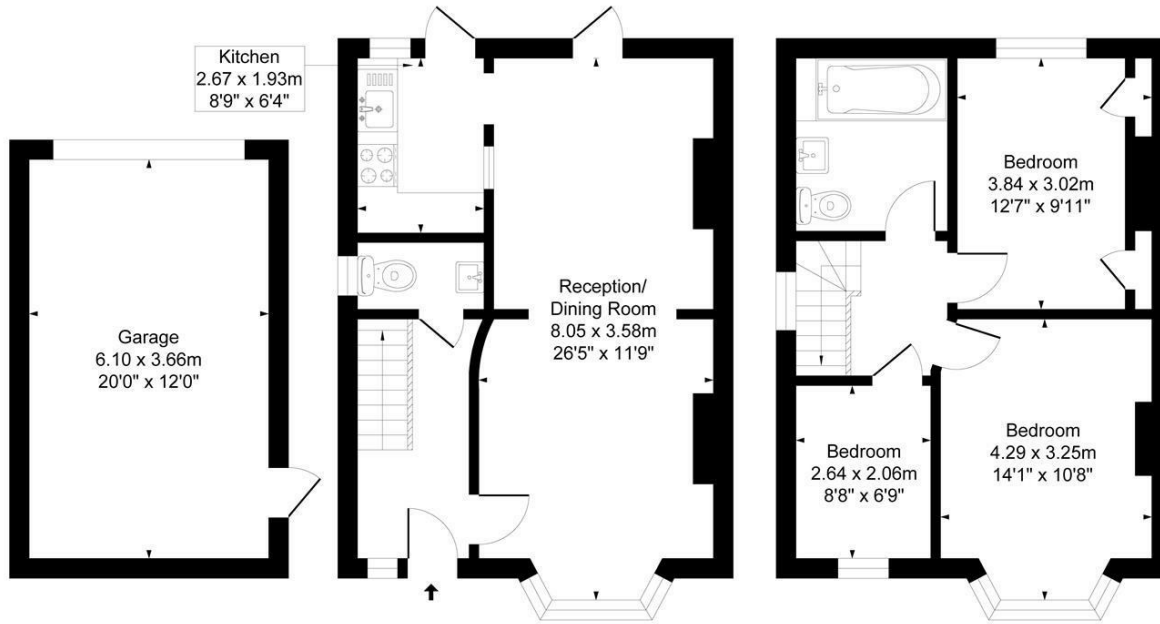




Woodlands Gardens TW7

Approx. Gross Internal Floor Area
107.5 Sq M - 1158 Sq Ft

ChaseBuchanan



Garage
Approximate Floor Area
240.00 sq.ft
(22.29 sq.m)

Ground Floor
Approximate Floor Area
458.82 sq.ft
(42.62 sq.m)

First Floor
Approximate Floor Area
458.82 sq.ft
(42.62 sq.m)

Illustration for identification purposes only, measurements are approximate, not to scale.
Produced By Esjay Property Marketing

For more information or to book a viewing, please contact:

020 8758 1755

isleworth@chasebuchanan.london

480 London Road, TW7 4DE

ChaseBuchanan

Care has been taken in the preparation of these particulars, however, their accuracy is not guaranteed and they do not form part of any contract. Measurements stated must be considered maximum.

