



**Spring Grove Crescent
Hounslow**

£750,000

ChaseBuchanan

Key Features

- Viewings accompanied by Chase Buchanan
- Four bedroom semi-detached family home
- Immaculately presented throughout
- Parking for five cars
- Internal annexe
- Landscaped garden with studio
- Versatile & spacious accommodation
- Located close to Osterley and Hounslow East tube stations



Description

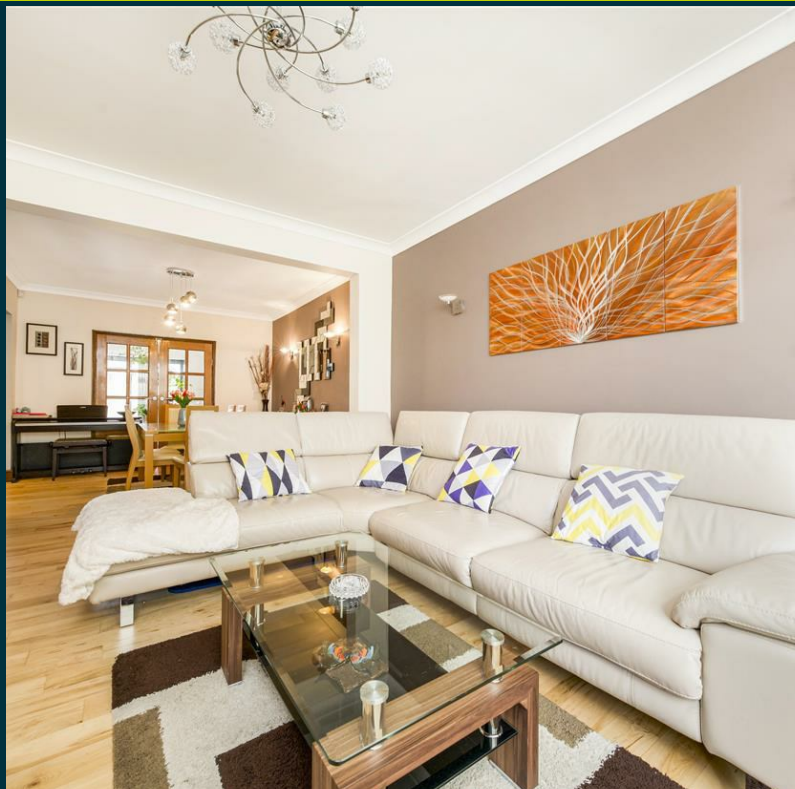
This immaculately presented four-bedroom, semi-detached family home boasts spacious accommodation with a ground floor internal annexe and gated parking for up to five cars.

The property comprises a stunning, modern kitchen/breakfast room, a reception room, a dining room, bedroom four, a shower room and a utility area. The hallway with an attractive timber/glass staircase leads upstairs to three bedrooms, two generous doubles and a spacious single, all with built-in stylish fitted wardrobes and storage, a family bathroom and access to a boarded loft.

The garden is beautifully landscaped and benefits from a studio with power, which could be used for additional accommodation.

Spring Grove Crescent is ideally located for Osterley and Hounslow East tube stations, as well as the large selection of shops and eateries in Hounslow town centre.





Spring Grove Crescent TW3

Approx. Gross Internal Floor Area
132.8 Sq M - 1431 Sq Ft
(Including Studio Area)

ChaseBuchanan

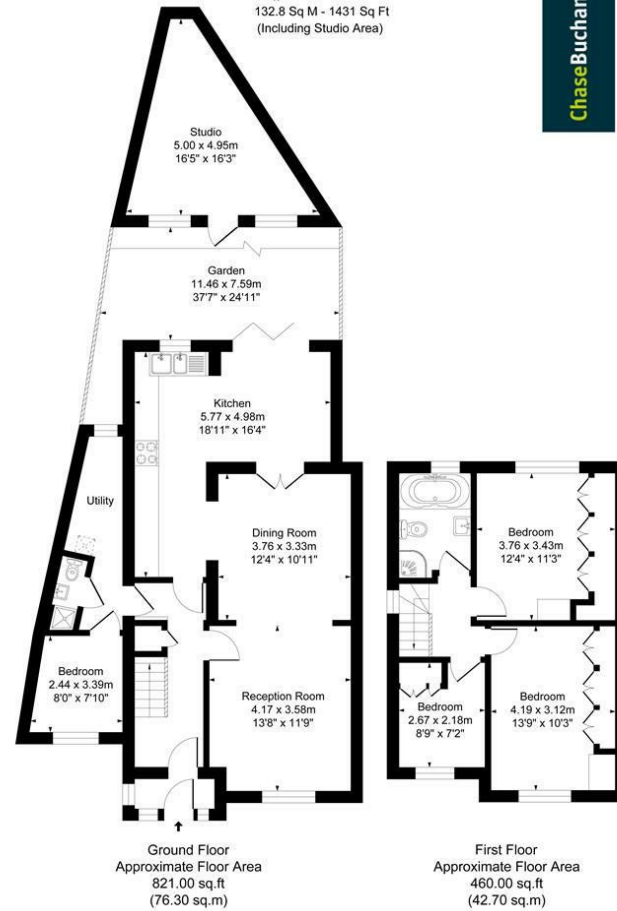


Illustration for identification purposes only, measurements are approximate, not to scale.
Produced By Ejuj Property Marketing

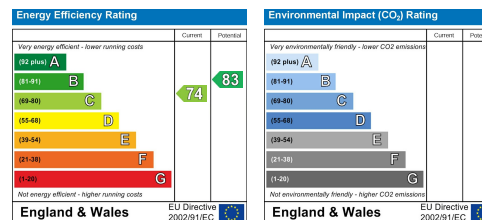
For more information or to book a viewing, please contact:

020 8758 1755

isleworth@chasebuchanan.london

480 London Road, TW7 4DE

Care has been taken in the preparation of these particulars, however, their accuracy is not guaranteed and they do not form part of any contract. Measurements stated must be considered maximum.



ChaseBuchanan