

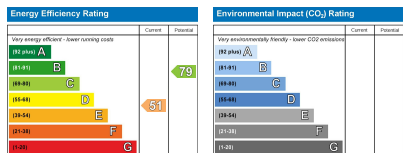
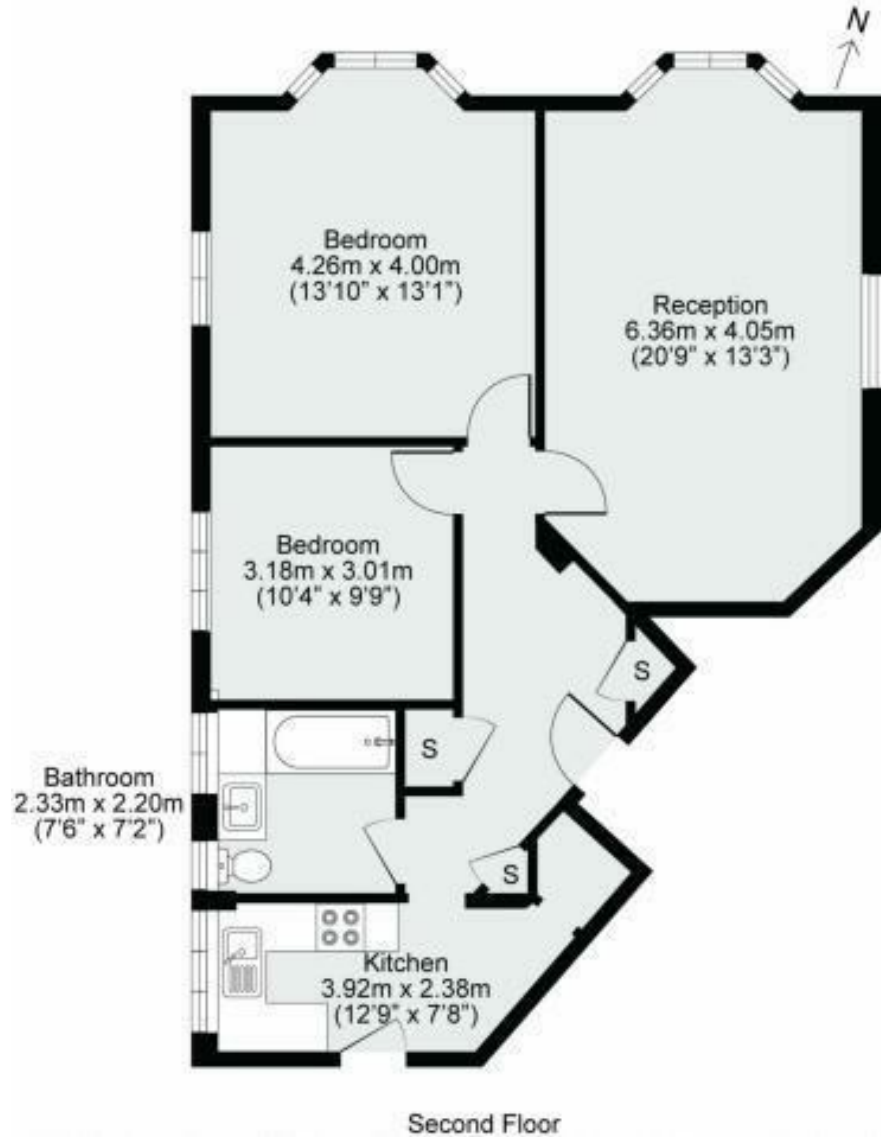
**Great West Road
Isleworth
TW7 4PX**

£1,650

ChaseBuchanan



Osterley Court, Great West Road, TW7 GROSS INTERNAL AREA 76.0sqm / 818.1sqft



- Viewings Accompanied by Chase Buchanan
- Two Double Bedrooms
- Easy Access to A4/M4
- Access to Osterley Underground Station
- Allocated Parking
- EPC E

This spacious first-floor apartment boasts two double bedrooms within the highly desirable Osterley Court development. Offering a harmonious blend of comfort and convenience, the property features a sizeable reception room, a well-appointed separate kitchen, and a modern family bathroom.

Strategically positioned off the Great West Road, just opposite Osterley Tube Station, Osterley Court provides unparalleled accessibility to the heart of the city. Additionally, Syon BR Mainline Station is conveniently nearby. Residents will appreciate the proximity to a wealth of local amenities and retail options in Osterley, Isleworth

For more information or to book a viewing, please contact:

020 8758 1755

ChaseBuchanan

7 Odeon Parade, 480 London Road, Isleworth, Middlesex, TW7 4DE