

**The Drive  
Isleworth  
TW7 4AE**

Offers In Excess Of £600,000

**ChaseBuchanan**





## The Drive TW7

Approx. Gross Internal Floor Area  
106.0 Sq M - 1142 Sq Ft

ChaseBuchanan

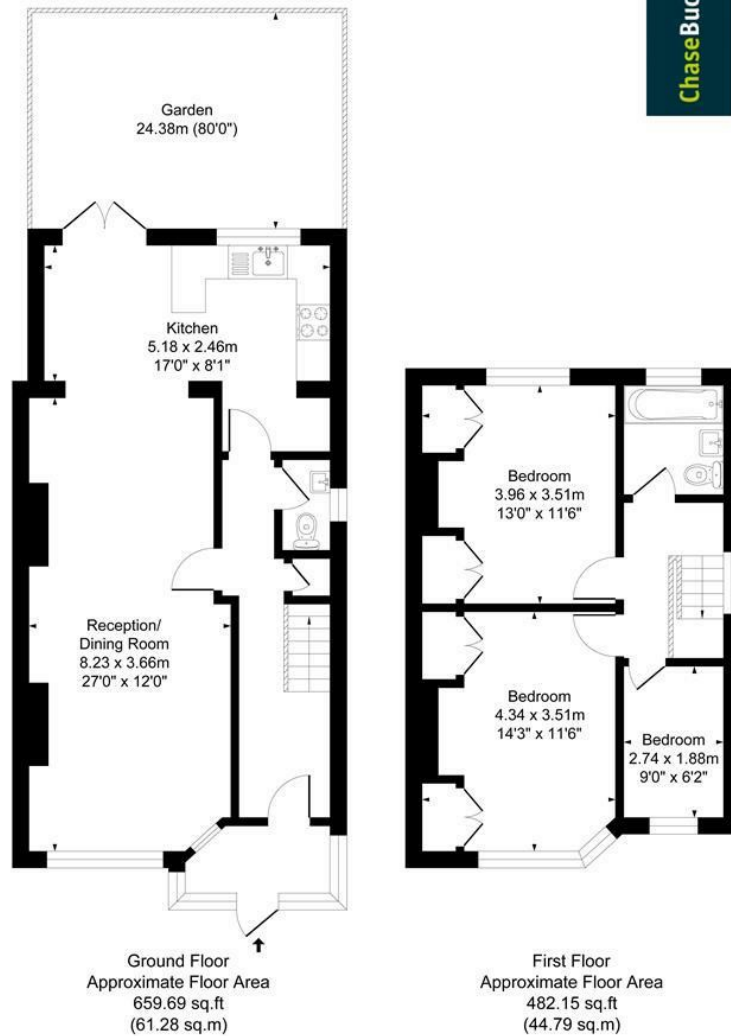
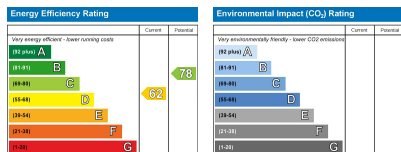


Illustration for identification purposes only, measurements are approximate, not to scale.  
Produced By Esjay Property Marketing



Care has been taken in the preparation of these particulars, however, their accuracy is not guaranteed and they do not form part of any contract. Measurements stated must be considered maximum.

- Viewings accompanied by Chase Buchanan
- Superb rear garden
- Spacious accommodation
- Short walk to Isleworth train station
- Three bedroom semi-detached family home
- Ample off road parking
- Short walk to Hounslow East tube station
- Potential to extend further (STPP)

This spacious three bedroom semi-detached family home is located on this prime residential road in Isleworth, boasting a large rear garden, ample off-road parking and the potential to extend further (STPP).

The accommodation comprises an inviting entrance hall, a bay-fronted reception room/dining room, kitchen, utility area, and a guest WC on the ground floor, whilst the first floor offers three generous sized bedrooms, a family bathroom and access to the loft. Externally there is a driveway for two cars and a superb rear garden.

The Drive is a popular residential road, ideally situated for easy access to Isleworth BR mainline station and Osterley Tube (Piccadilly Line). The shops and amenities of Isleworth, Osterley and St Margarets are also within easy reach.

An appointment to view is highly recommended via the vendor's sole agent Chase Buchanan.

For more information or to book a viewing, please contact:

020 8758 1755

ChaseBuchanan

7 Odeon Parade, 480 London Road, Isleworth, Middlesex, TW7 4DE