



**Downs View  
Isleworth**

£900,000

**ChaseBuchanan**

## Key Features

- Viewings accompanied by Chase Buchanan
- Bay fronted semi-detached family home
- Three bedrooms
- Recently renovated
- Open plan living
- Detached studio in garden
- Quiet cul-de-sac
- Close to Syon lane mainline station



## Description

A stunning bay-fronted semi-detached family home, renovated to the highest of standards located in a quiet cul-de-sac close to Syon lane mainline station.

The accommodation on the ground floor comprises an inviting hallway leading to a open-plan reception/dining room, a smart modern kitchen, a utility room and a shower room. Whilst the first floor boasts three generous-sized bedrooms and a family bathroom. Externally there is parking for two cars on the driveway, a generous-sized rear garden, and a brick-built studio.

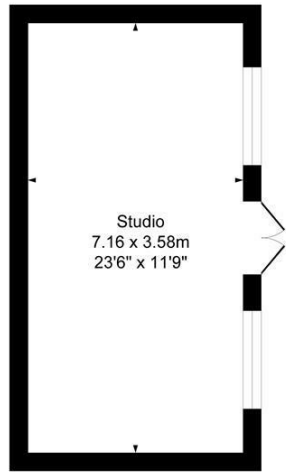
Downs View is well located for the amenities of Isleworth as well as being near Osterley tube station, the A4 with road links in and out of Central London/Heathrow as well as being in a popular school catchment area with the award-winning Nishkam School close by.





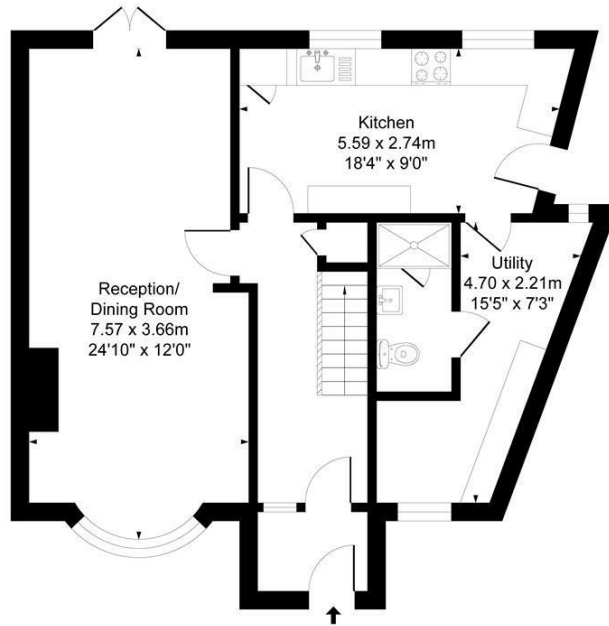
### Downs View TW7

Approx. Gross Internal Floor Area  
138.0 Sq M - 1485 Sq Ft



Studio  
7.16 x 3.58m  
23'6" x 11'9"

Garage  
Approximate Floor Area  
276.12 sq.ft  
(25.65 sq.m)

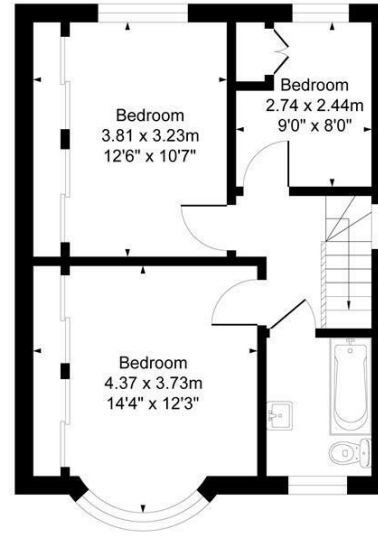


Reception/  
Dining Room  
7.57 x 3.66m  
24'10" x 12'0"

Kitchen  
5.59 x 2.74m  
18'4" x 9'0"

Utility  
4.70 x 2.21m  
15'5" x 7'3"

Ground Floor  
Approximate Floor Area  
739.97 sq.ft  
(68.74 sq.m)



Bedroom  
3.81 x 3.23m  
12'6" x 10'7"

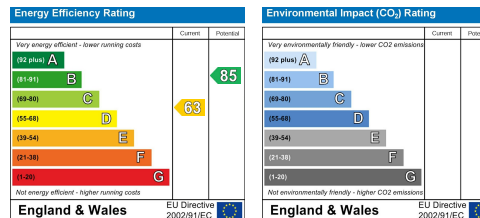
Bedroom  
2.74 x 2.44m  
9'0" x 8'0"

Bedroom  
4.37 x 3.73m  
14'4" x 12'3"

First Floor  
Approximate Floor Area  
469.33 sq.ft  
(43.60 sq.m)

Illustration for identification purposes only, measurements are approximate, not to scale.  
Produced By Esjay Property Marketing

Care has been taken in the preparation of these particulars, however, their accuracy is not guaranteed and they do not form part of any contract. Measurements stated must be considered maximum.



For more information or to book a viewing, please contact:

**020 8758 1755**

isleworth@chasebuchanan.london

480 London Road, TW7 4DE

**ChaseBuchanan**