

**Draymans Way
Isleworth
TW7 6SY**

£1,450

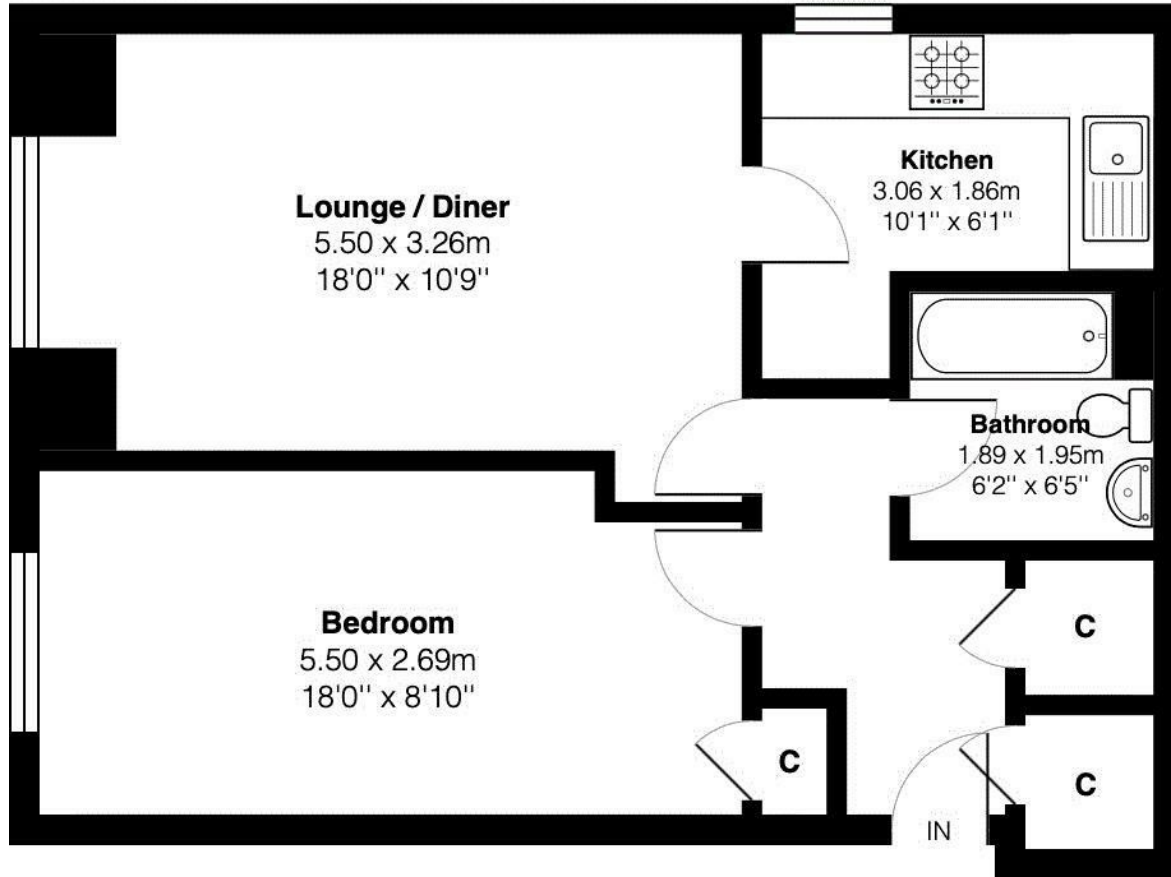
ChaseBuchanan



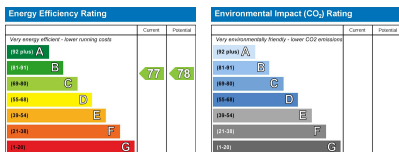
Wilkinson House

Total Area: 53.6 m² ... 577 ft²

All measurements are approximate and for display purposes only



Ground Floor



- Viewings Accompanied by Chase Buchanan
- Spacious Flat
- Allocated Parking
- Double Bedroom
- Station Nearby
- EPC C

An elegant one-bedroom ground floor flat in the tranquil Draymans Way development, Isleworth. This purpose-built apartment features a spacious reception room, modern kitchen, and bathroom, alongside a sizable double bedroom. Enjoy the convenience of a private allocated parking space and proximity to Isleworth mainline station, West Middlesex Hospital, and the scenic River Thames all within walking distance. Experience comfort and accessibility in this desirable residential locale.

For more information or to book a viewing, please contact:

020 8758 1755

ChaseBuchanan

7 Odeon Parade, 480 London Road, Isleworth, Middlesex, TW7 4DE

Care has been taken in the preparation of these particulars, however, their accuracy is not guaranteed and they do not form part of any contract. Measurements stated must be considered maximum.