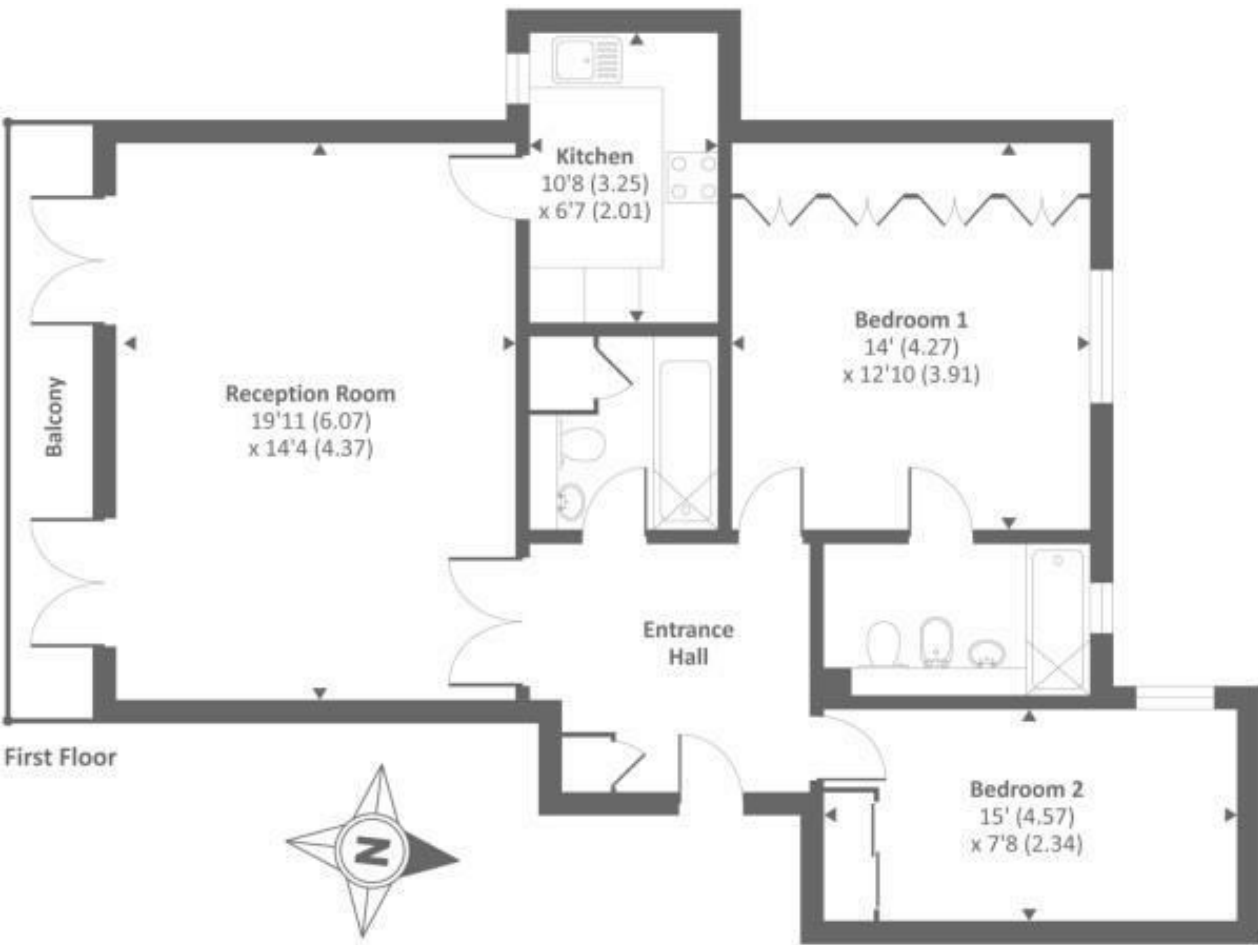


**Flat 11, 38A  
Marlborough Place  
London  
NW8 0PE**

£3,250 PCM

**ChaseBuchanan**





- Viewings Accompanied by Chase Buchanan
- Underground Parking
- Spacious
- Modern Layout
- Two Double Bedrooms
- Two Bathrooms
- Tube Station Nearby
- EPC C

Experience urban elegance in this meticulously designed two-bedroom haven nestled in a contemporary portered block in St. John's Wood. Boasting a spacious reception room, perfect for entertaining or quiet relaxation, and a private balcony offering panoramic views. With secure underground parking for peace of mind, this residence seamlessly combines modern comfort with sophisticated living.

Viewings highly recommended.

For more information or to book a viewing, please contact:

**020 8758 1755**

**ChaseBuchanan**

7 Odeon Parade, 480 London Road, Isleworth, Middlesex, TW7 4DE

Energy Efficiency Rating		Environmental Impact (CO <sub>2</sub> ) Rating	
Current	Desired	Current	Desired
80	80		
69			

Care has been taken in the preparation of these particulars, however, their accuracy is not guaranteed and they do not form part of any contract. Measurements stated must be considered maximum.