



**St. Marys Crescent  
Osterley**

£1,000,000

**ChaseBuchanan**

## Key Features

- Viewings accompanied by Chase Buchanan
- Semi-detached family home
- Four bedrooms
- Open plan living/dining room
- Off street parking
- Potential to extend (STPP)
- Close to Osterley Piccadilly line station (Zone 4)
- No onward chain



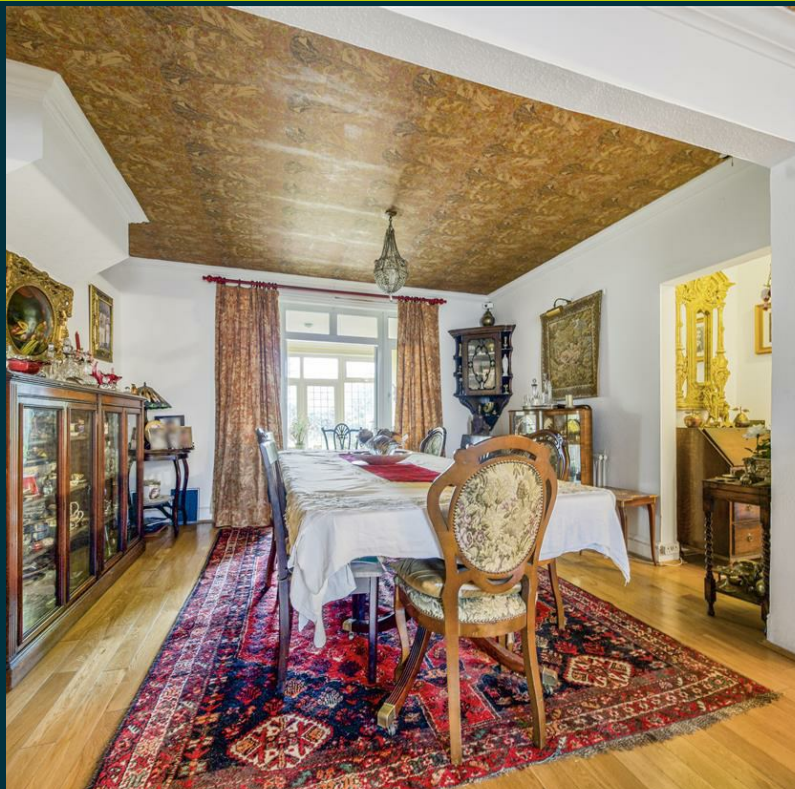
## Description

This is a fantastic opportunity to acquire a substantial semi-detached house moments from Osterley tube station, boasting four double bedrooms, off street parking, and further potential to extend subject to planning permission.

Located on one of Osterley's most popular streets, this well-proportioned house provides fantastic living space on the ground floor and a large eat-in kitchen. The property also benefits from ample storage space and a large family bathroom.

Offered to the market with no onward chain. Viewings are strictly by appointment through the seller's sole agents Chase Buchanan.

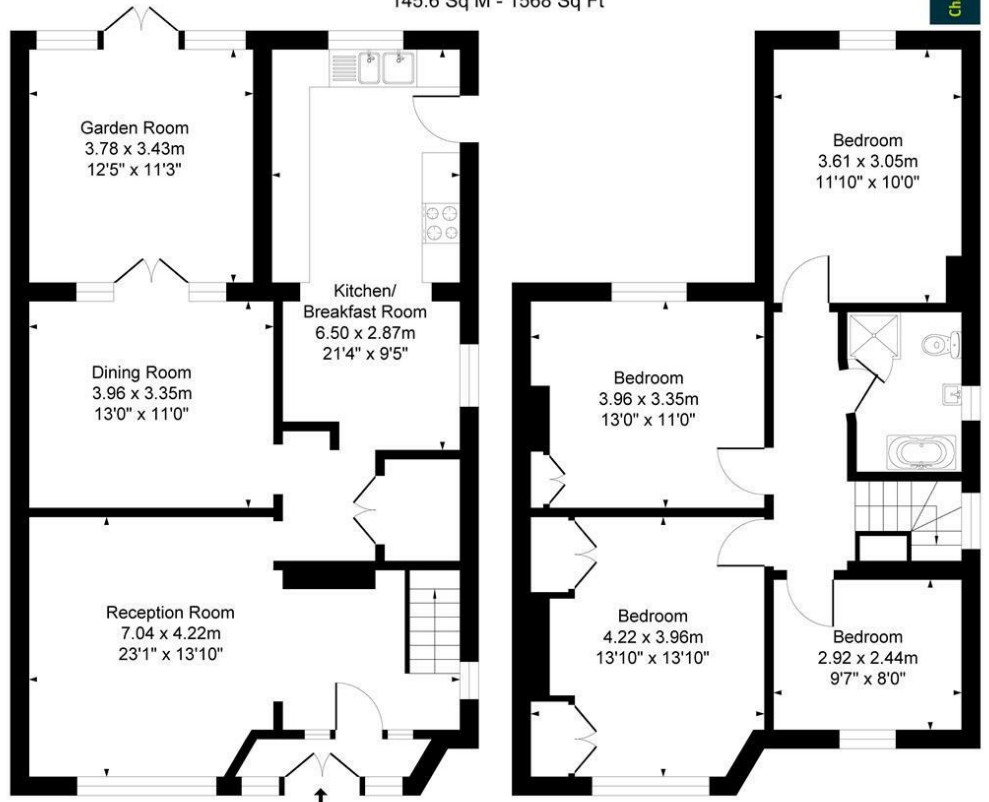




# St Mary's Crescent TW7

Approx. Gross Internal Floor Area  
145.6 Sq M - 1568 Sq Ft

ChaseBuchanan



Ground Floor  
Approximate Floor Area  
883.09 sq.ft  
(82.04 sq.m)

First Floor  
Approximate Floor Area  
685.17 sq.ft  
(63.65 sq.m)

Illustration for identification purposes only, measurements are approximate, not to scale.  
Produced By Esjay Property Marketing

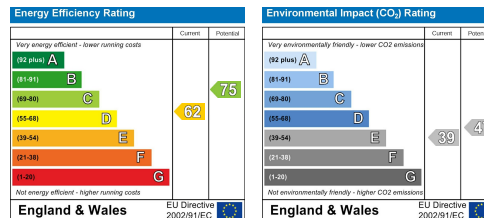
For more information or to book a viewing, please contact:

**020 8758 1755**

isleworth@chasebuchanan.london

480 London Road, TW7 4DE

Care has been taken in the preparation of these particulars, however, their accuracy is not guaranteed and they do not form part of any contract. Measurements stated must be considered maximum.



**ChaseBuchanan**