



**Jersey Road  
Hounslow**

**£825,000**

**ChaseBuchanan**

## Key Features

- Viewings accompanied by Chase Buchanan
- Detached bungalow
- Four bedrooms
- Open plan reception/kitchen
- Two bathrooms
- Off street parking
- Large rear garden
- Development potential (subject to planning)
- Chain free
- Close to Osterley tube station

## Description

Offered to the market chain free is this lovely four bedroom detached bungalow on Jersey Road.

The accommodation comprises a large open plan reception/kitchen with doors onto the rear garden, primary bedroom with an en-suite shower room, a further three double bedrooms, family bathroom, utility room, study and two storage rooms. Externally there is a driveway for two cars, and a large rear garden which incorporates a garden room.

Jersey Road is well placed for Osterley tube station (Piccadilly Line) as well as being within short proximity to Hounslow town centre with the A4 road links into central London and Heathrow also close by.





**Jersey Road**  
 Approx. Gross Internal Floor Area  
 165.4 Sq M - 1780 Sq Ft

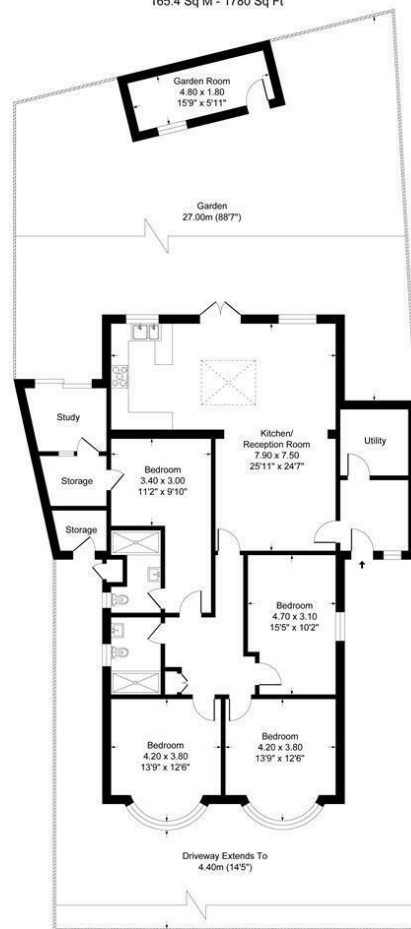
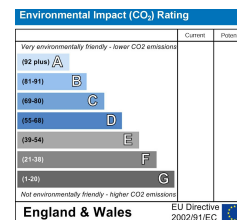
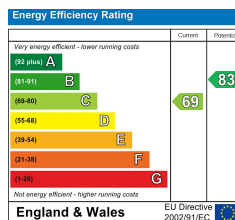


Illustration for identification purposes only, measurements are approximate, not to scale.  
 Produced By Esjay Property Marketing

Care has been taken in the preparation of these particulars, however, their accuracy is not guaranteed and they do not form part of any contract. Measurements stated must be considered maximum.



For more information or to book a viewing, please contact:

**020 8758 1755**

isleworth@chasebuchanan.london

480 London Road, TW7 4DE