

**Denton Court Avenue
Road
Isleworth
TW7 4RS**

£250,000

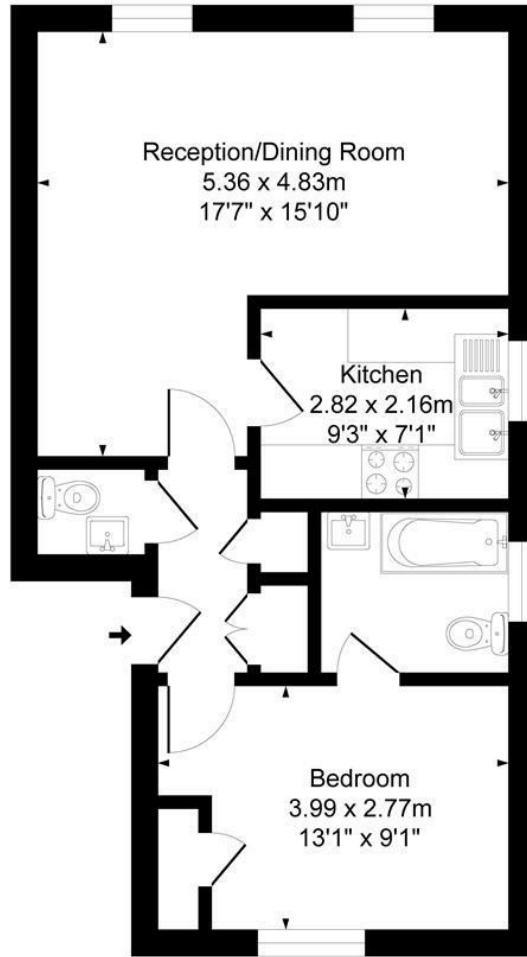
ChaseBuchanan



Denton Court TW7

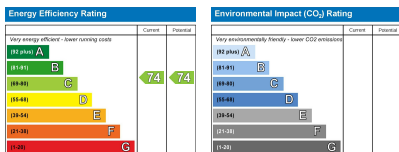
Approx. Gross Internal Floor Area
48.8 Sq M - 526 Sq Ft

ChaseBuchanan



Top Floor

Illustration for identification purposes only, measurements are approximate, not to scale.
Produced By Esjay Property Marketing



- Viewings accompanied by Chase Buchanan
- One bedroom
- Some modernisation required
- Moments from Isleworth mainline station
- Top floor apartment
- Open plan living/dining room
- Secure underground parking
- Chain free station

A wonderful top floor one bedroom apartment, ideally located within moments of Isleworth mainline station (37 minutes to London Waterloo).

Offered to the market chain free the accommodation comprises an open plan reception/dining room, kitchen, double bedroom with an en-suite bathroom, and an additional WC. Further benefits include secure underground parking.

Avenue Road is just off London Road, with all the amenities of central Isleworth on the doorstep. Isleworth train station is within a short walk and Osterley tube station is also nearby.

For more information or to book a viewing, please contact:

020 8758 1755

ChaseBuchanan

7 Odeon Parade, 480 London Road, Isleworth, Middlesex, TW7 4DE

Care has been taken in the preparation of these particulars, however, their accuracy is not guaranteed and they do not form part of any contract. Measurements stated must be considered maximum.