



**Essex Avenue  
Isleworth**

£625,000

**ChaseBuchanan**

## Key Features

- Viewings accompanied by Chase Buchanan
- Four bedroom family home
- Quiet location
- Two bathrooms
- Off road parking for two cars
- Large workshop
- Access road at rear
- Potential to develop (STPP)



## Description

Chase Buchanan are delighted to offer to the market this four double bedroom family home boasting spacious living, off-street, parking plus the potential to extend further.

On the ground floor there is a bay fronted reception room, a large kitchen, conservatory and dining space, shower room and utility room.

The first floor offers three double bedrooms and a family bathroom with a fourth bedroom on the second floor.

To the rear is a lovely low maintenance garden, a large workshop and rear access road.

Essex Road is a popular residential location in Isleworth close to local shops and amenities, Isleworth Main Line Station, and multiple bus routes towards Richmond, Hounslow, and Kingston. In catchment of reputable schools and good nurseries. Motorists have easy access to the A316, M3, M4 and M25.



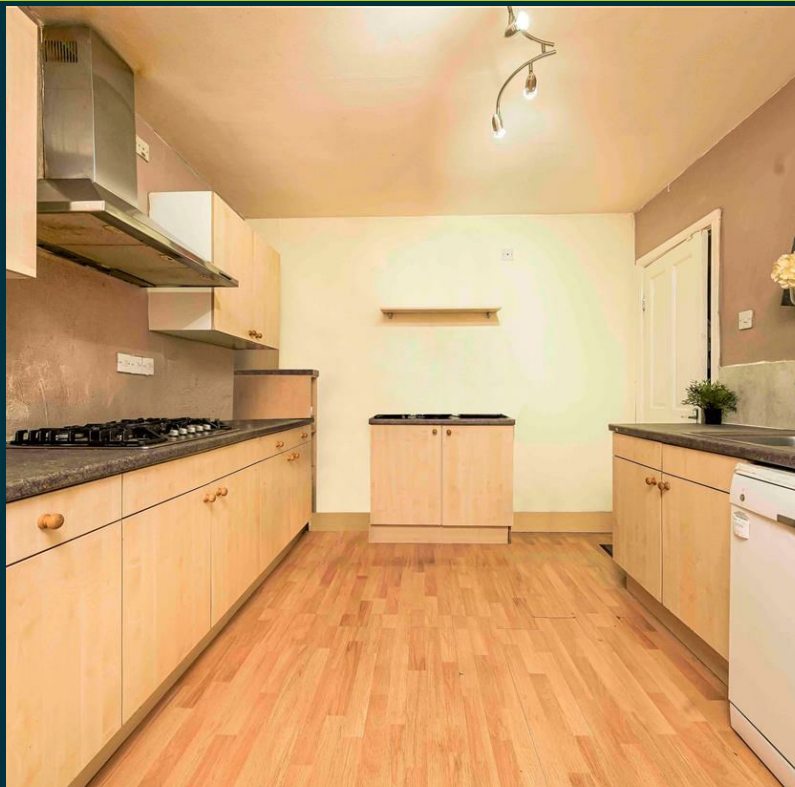
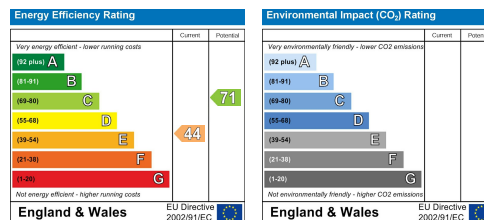




Illustration for identification purposes only, measurements are approximate, not to scale.

Care has been taken in the preparation of these particulars, however, their accuracy is not guaranteed and they do not form part of any contract. Measurements stated must be considered maximum.



For more information or to book a viewing, please contact:

**020 8758 1755**

isleworth@chasebuchanan.london

480 London Road, TW7 4DE

**ChaseBuchanan**