

**Shelley Crescent
Hounslow
TW5 9BH**

£700,000

ChaseBuchanan



Shelly Crescent TW5

Approx. Gross Internal Floor Area
151.2 Sq M - 1628 Sq Ft

ChaseBuchanan

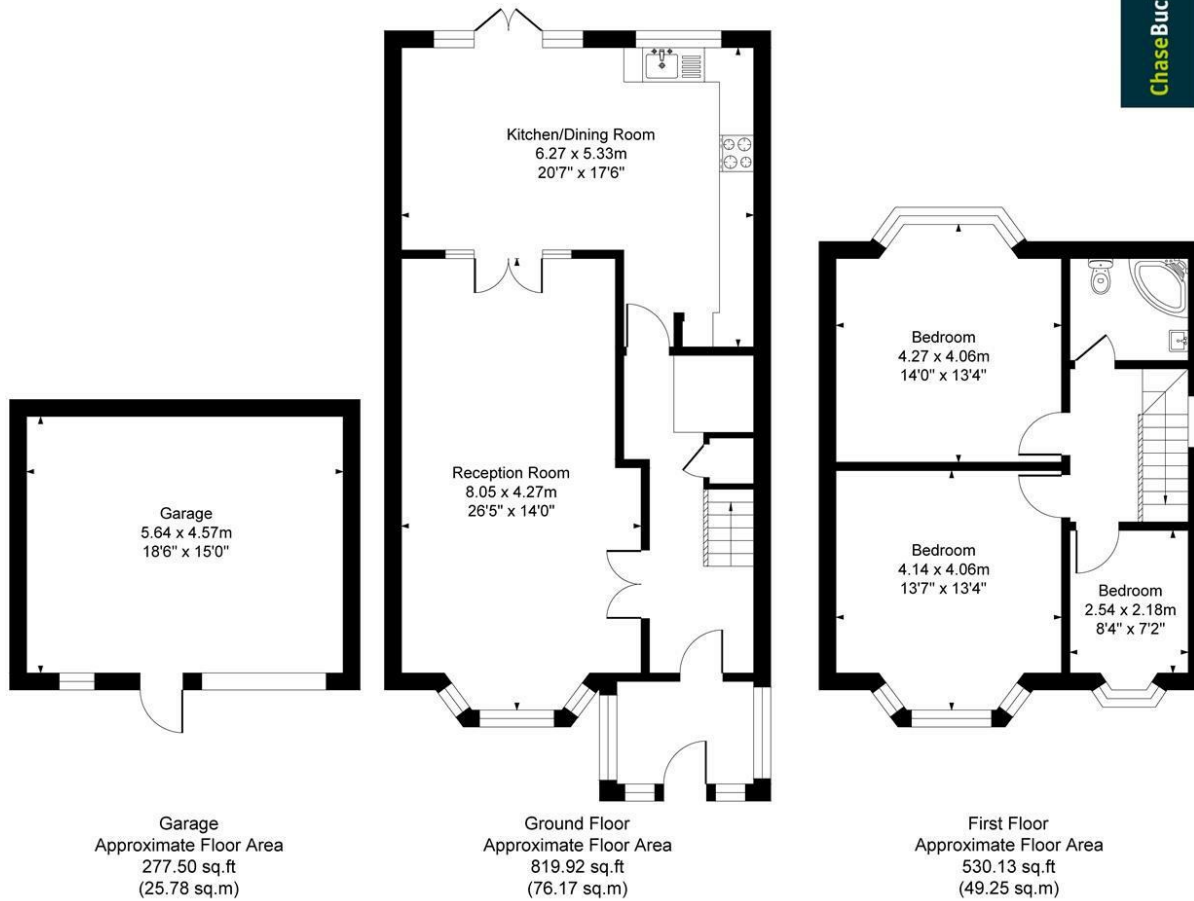


Illustration for identification purposes only, measurements are approximate, not to scale.

- Viewings accompanied by Chase Buchanan
- Three bedrooms
- Open plan living
- Close to Hounslow West tube station
- Semi-detached family home
- Driveway for several cars
- Large rear garden with a double garage
- Chain free

A larger than average semi-detached family home, located in this popular road off Burns Way in Hounslow.

The accommodation on the ground floor comprises an inviting hallway, a bay fronted double reception, an extended kitchen/dining room and a guest WC. The first floor offers three generous sized bedrooms and a family bathroom. Further benefits include a driveway for several cars, a large rear garden and a brick built double garage at the bottom of the garden.

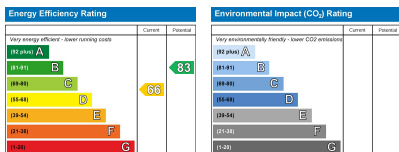
Shelley Crescent is within walking distance of Hounslow West tube station with an array of local shops close by, the A4/M4 road links are also close by giving easy access in and out of Central London and Heathrow.

For more information or to book a viewing, please contact:

020 8758 1755

ChaseBuchanan

7 Odeon Parade, 480 London Road, Isleworth, Middlesex, TW7 4DE



Care has been taken in the preparation of these particulars, however, their accuracy is not guaranteed and they do not form part of any contract. Measurements stated must be considered maximum.