



**Devon Way
Hounslow**

£725,000

ChaseBuchanan

Key Features

- Viewings accompanied by Chase Buchanan
- Four bedroom semi-detached family home
- Immaculately presented throughout
- Large west facing garden
- Off street parking
- Short walk to Hounslow West Underground Station



Description

This stunning and immaculately presented four-bedroom bay fronted 1930's semi-detached family home, with a large west-facing garden, is located within walking distance of Hounslow West tube station.

The ground floor accommodation comprises an inviting hallway, a reception room, an open plan modern fitted kitchen/dining room with bi-folding doors, a fourth bedroom perfect for relatives and W.C.

The first floor offers three very well-proportioned bedrooms and a family bathroom. Further benefits include; underfloor heating, a large rear garden, a front garden with private parking, side access, and huge potential to extend further (STPP).

Devon Way is located a stone's throw away from Westbrook Primary School, local amenities including Sainsbury's and excellent bus links and is approximately a mile from Hounslow West Station (Piccadilly line).





Devon Way

Approx. Gross Internal Floor Area
126.8 Sq M - 1365 Sq Ft

ChaseBuchanan

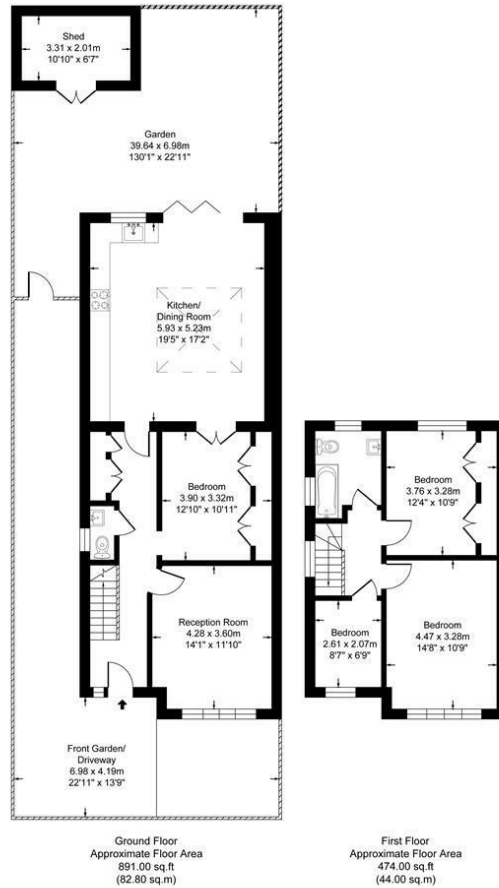


Illustration for identification purposes only, measurements are approximate, not to scale.

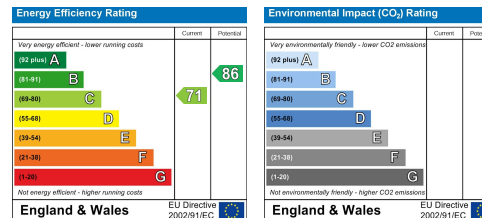
For more information or to book a viewing, please contact:

020 8758 1755

isleworth@chasebuchanan.london

480 London Road, TW7 4DE

Care has been taken in the preparation of these particulars, however, their accuracy is not guaranteed and they do not form part of any contract. Measurements stated must be considered maximum.



ChaseBuchanan