



**Spring Grove Road  
Isleworth**

**£1,300,000**

**ChaseBuchanan**

## Key Features

- Viewings accompanied by Chase Buchanan
- Detached gated family home
- Six bedrooms
- Expansive living room
- Five bathrooms
- Integral garage
- Nearly 3000 sq.ft of living space
- Chain free



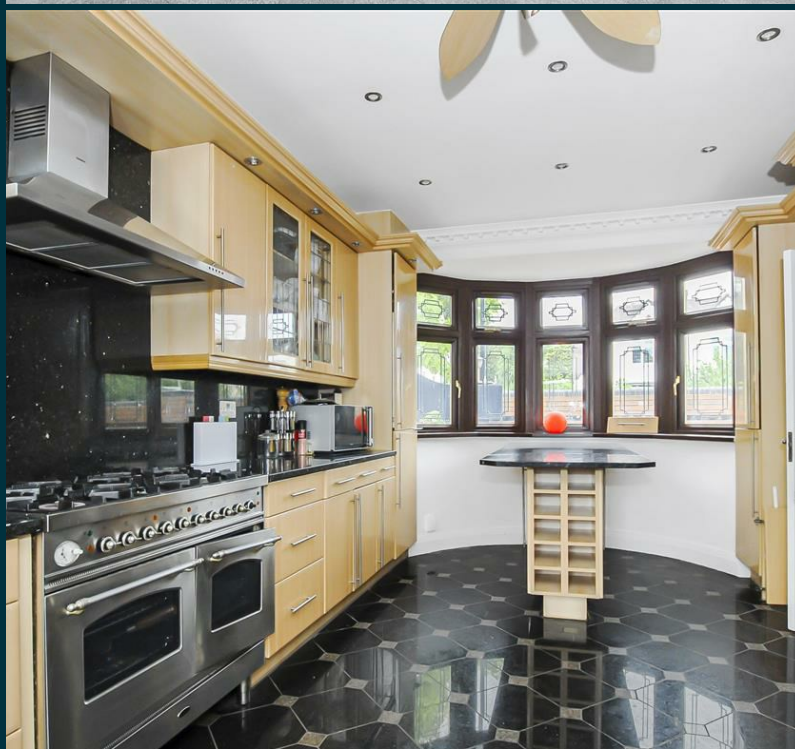
## Description

Spanning at nearly 3000 sq.ft of living space is this fantastic detached, gated family home, located in the prime of Spring Grove Road in Isleworth.

The accommodation comprises an inviting hallway, an expansive sitting room, a dining room, a large eat-in kitchen, a utility room, a guest cloakroom and an integral garage all on the ground floor. The first floor offers a master bedroom with a walk-in wardrobe and en-suite shower room, a further two bedrooms with built-in wardrobes and en-suite shower room, a fourth bedroom with built-in wardrobes and a family bathroom. The second floor hosts a further two double bedrooms and a bathroom. Further benefits include a front and rear garden.

Spring Grove Road is well placed for transport/road links into central London and Heathrow, with some highly regarded schools within the vicinity.



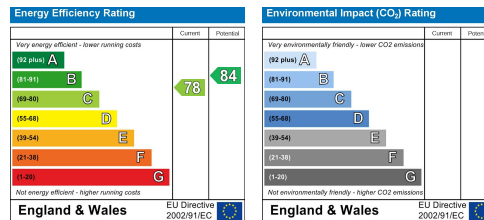


Spring Grove Road TW7  
 Approximate Gross Internal Floor Area = 273.7 sq m / 2947 sq ft



Illustration for identification purposes only, measurements are approximate, not to scale.

Care has been taken in the preparation of these particulars, however, their accuracy is not guaranteed and they do not form part of any contract. Measurements stated must be considered maximum.



For more information or to book a viewing, please contact:

**020 8758 1755**

isleworth@chasebuchanan.london

480 London Road, TW7 4DE

**ChaseBuchanan**