



**London Road
Isleworth**

£500,000

ChaseBuchanan

Key Features

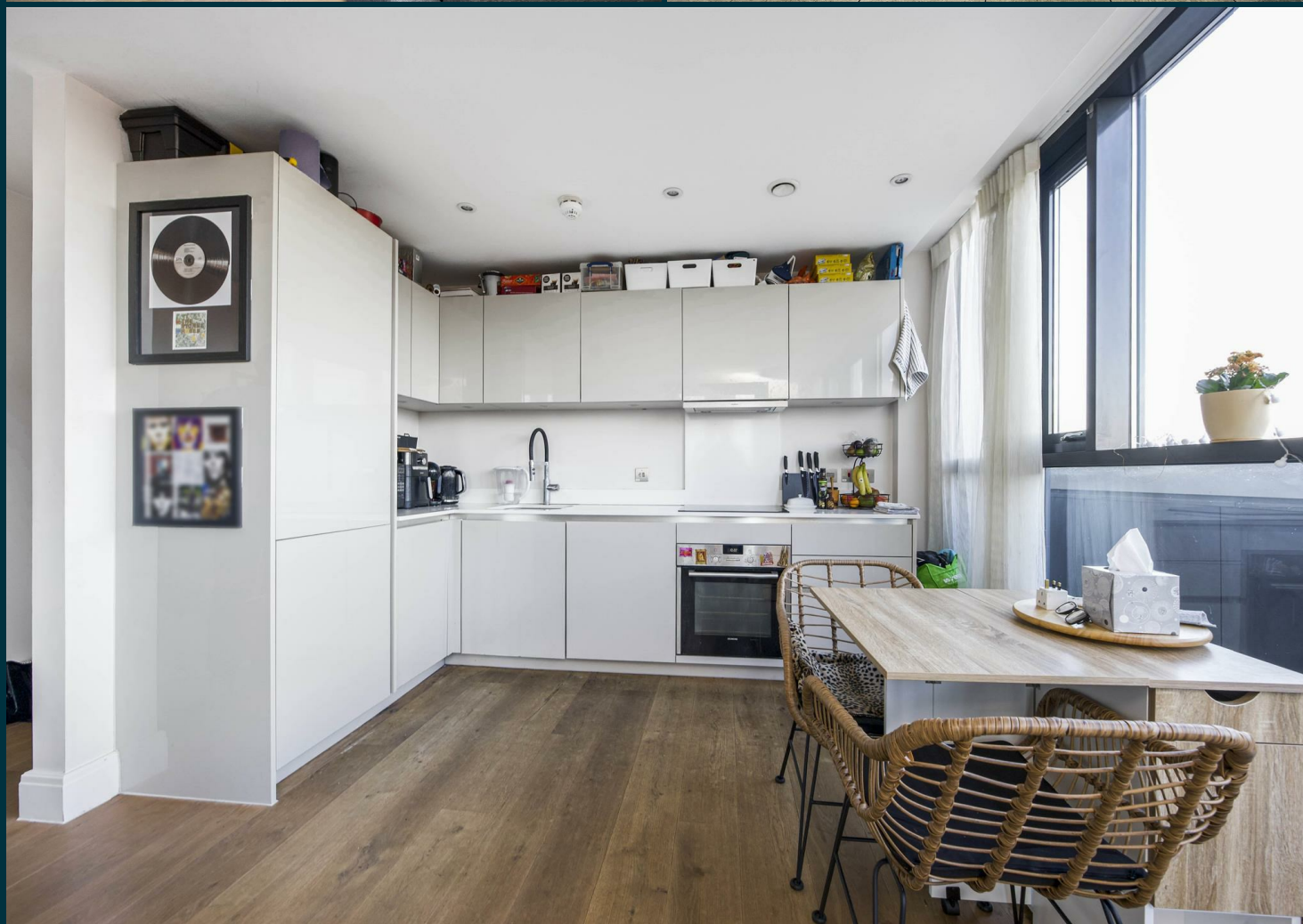
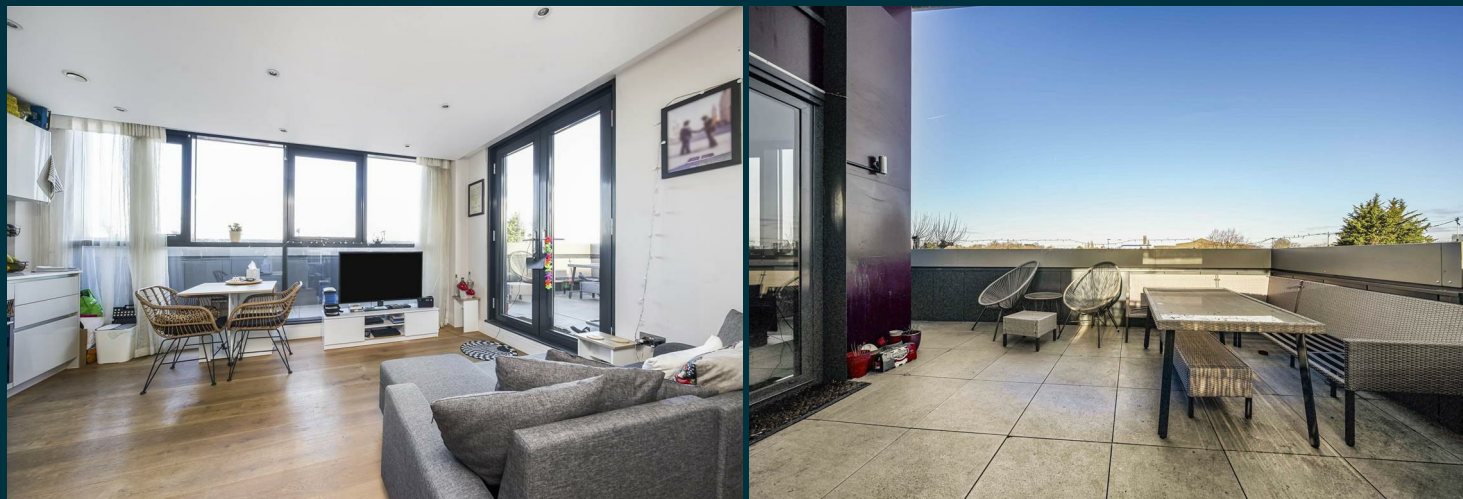
- Viewings accompanied by Chase Buchanan
- Penthouse apartment
- Two double bedrooms
- Large wrap around terrace
- Two bathrooms
- Secure gated parking
- Lift serviced
- Close to Syon Lane mainline station
- 146 years lease
- Chain free

Description

A stunning penthouse apartment located on the third floor of this stylish development moments from Syon Lane mainline station.

The accommodation comprises an open plan dual aspect living room/kitchen, two double bedrooms with an en-suite shower room to the master bedroom, a family bathroom, and a large wrap around terrace that can be accessed through the living area and both bedrooms. Further benefits include a lift to all floors, secure gated parking, a communal playground, bike and bin storage as well as a secure audio-visual entry phone system.

John Busch House is enviably positioned moments away from local amenities and the River Thames in Old Isleworth, with Brentford, Chiswick, Kew and Richmond within easy reach.





London Road TW7

Approx. Gross Internal Floor Area
64.3 Sq M - 693 Sq Ft

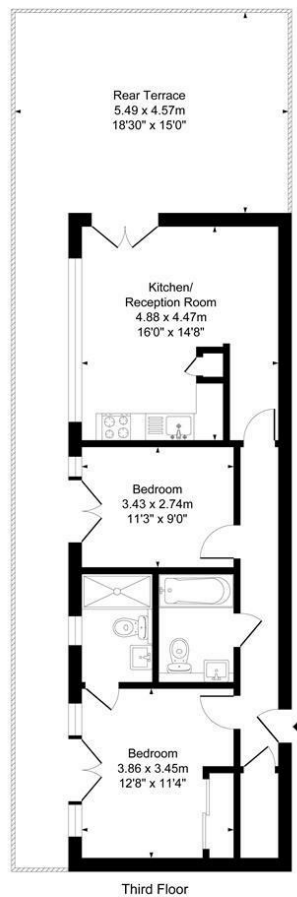
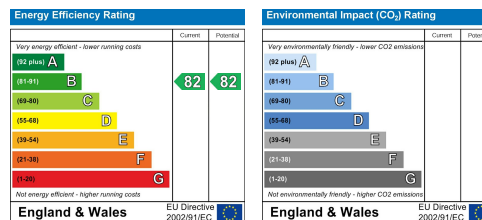


Illustration for identification purposes only, measurements are approximate, not to scale.

ChaseBuchanan

Care has been taken in the preparation of these particulars, however, their accuracy is not guaranteed and they do not form part of any contract. Measurements stated must be considered maximum.



For more information or to book a viewing, please contact:

020 8758 1755

isleworth@chasebuchanan.london

480 London Road, TW7 4DE

ChaseBuchanan