



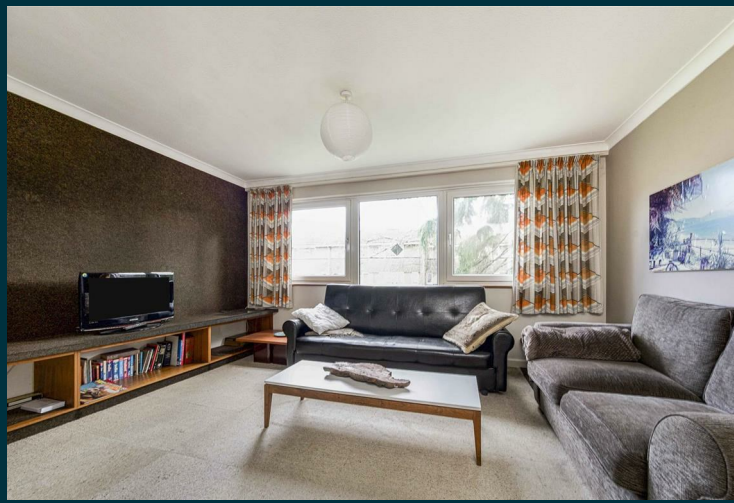
**Thornbury Road
Isleworth**

£495,000

ChaseBuchanan

Key Features

- Viewings accompanied by Chase Buchanan
- Lovely three bedroom home
- Own driveway to garage
- Good order throughout
- Close to transport links
- Chain free



Description

A fantastic three bedroom family home, located in this quiet development on Thornbury Road.

The accommodation comprises a bedroom, shower room and integral garage on the ground floor, while the first floor has an open plan living/dining room and a kitchen, with the second floor hosting two double bedrooms and a bathroom. Further benefits include off street parking and lovely communal gardens.

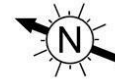
This property is well situated for all the local shops, amenities, and transport links of both Isleworth and Osterley. Osterley Tube Station is within easy walking distance, as is Isleworth BR Mainline Station with its direct links to London Waterloo.



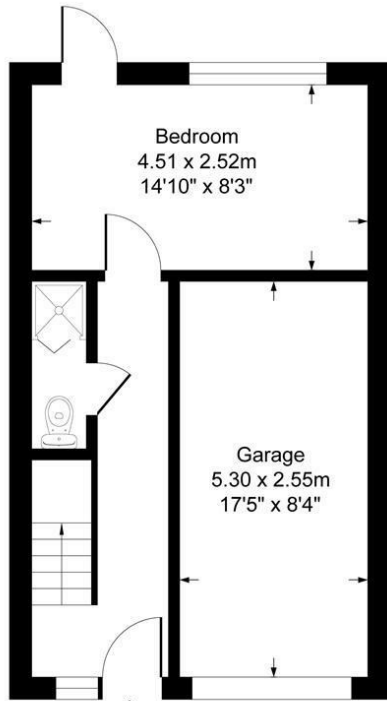


Thornbury Road TW7

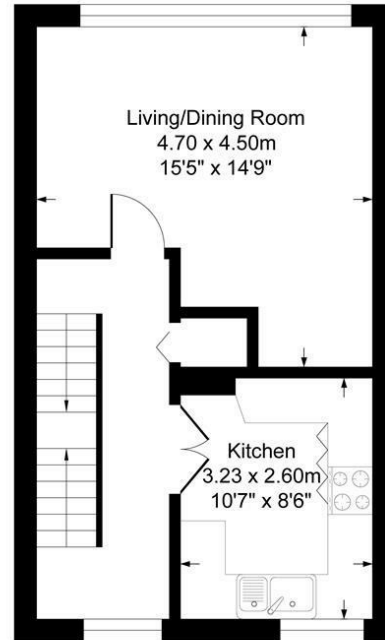
Approx. Gross Internal Floor Area
107.7 Sq M - 1160 Sq Ft



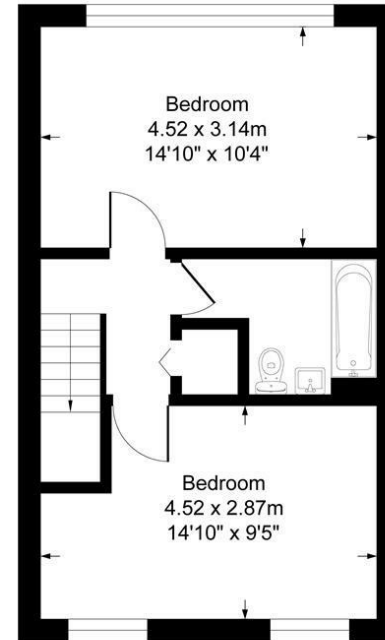
ChaseBuchanan



Ground Floor
Approximate Floor Area
386.74 sq.ft
(35.93 sq.m)



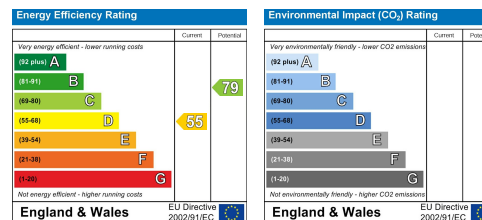
First Floor
Approximate Floor Area
386.74 sq.ft
(35.93 sq.m)



Top Floor
Approximate Floor Area
386.74 sq.ft
(35.93 sq.m)

Illustration for identification purposes only, measurements are approximate, not to scale.

Care has been taken in the preparation of these particulars, however, their accuracy is not guaranteed and they do not form part of any contract. Measurements stated must be considered maximum.



For more information or to book a viewing, please contact:

020 8758 1755

isleworth@chasebuchanan.london

480 London Road, TW7 4DE

ChaseBuchanan