

Ridgeway Road
Isleworth
TW7 5LA

£799,950

ChaseBuchanan



Ridgeway Road TW7

Approx. Gross Internal Floor Area
120.2 Sq M - 1294 Sq Ft

ChaseBuchanan

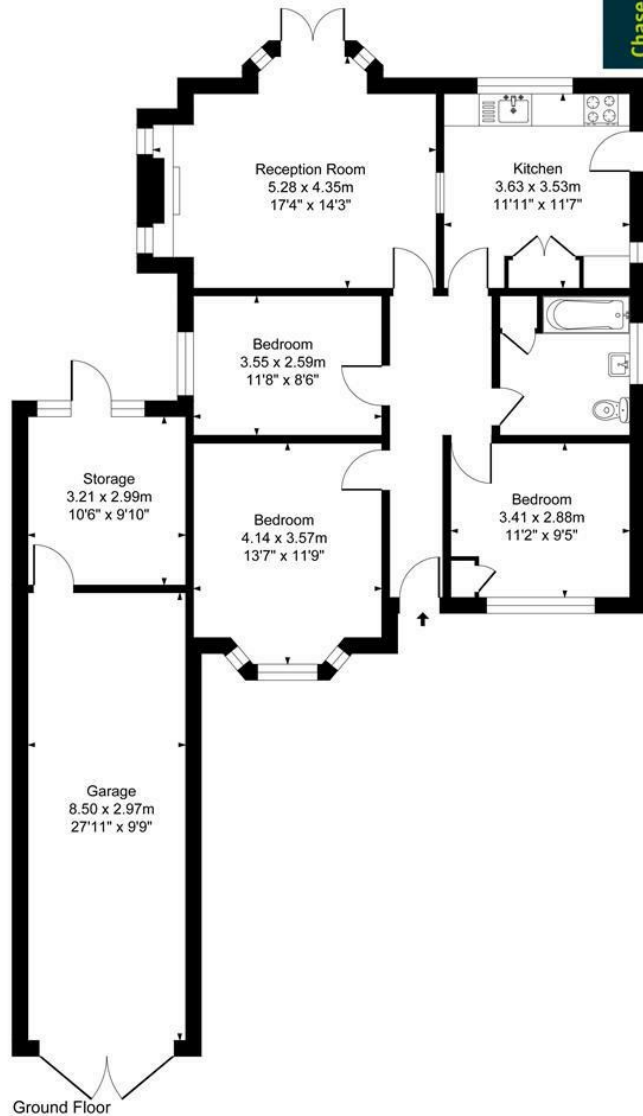
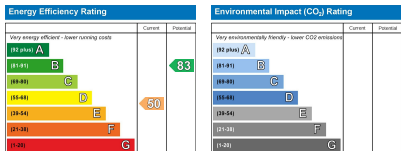


Illustration for identification purposes only, measurements are approximate, not to scale.



- Viewings accompanied by Chase Buchanan
- Three bedrooms
- Own driveway to garage
- Walking distance of Isleworth mainline station
- Detached bungalow
- Large rear garden
- Huge development potential (subject to planning)
- Chain free

Located on the highly coveted Ridgeway Road is this chain free detached bungalow with huge potential for development (subject to planning).

The property requires renovation throughout, and currently comprises a reception room, kitchen, bathroom and three double bedrooms. Externally there is a driveway to a garage and a large rear garden. Further benefits include a storage room at the back of the garage.

Ridgeway Road is well placed for Isleworth BR Station, and Osterley Tube Station as well as being within a popular school catchment area.

For more information or to book a viewing, please contact:

020 8758 1755

ChaseBuchanan

7 Odeon Parade, 480 London Road, Isleworth, Middlesex, TW7 4DE

Care has been taken in the preparation of these particulars, however, their accuracy is not guaranteed and they do not form part of any contract. Measurements stated must be considered maximum.