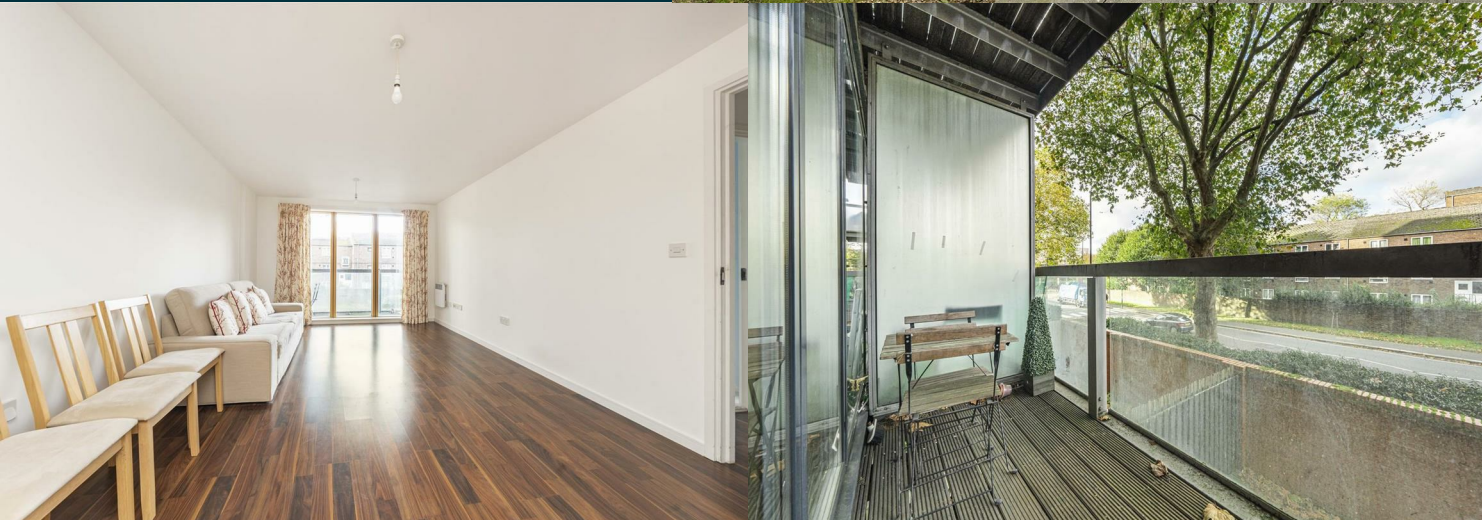


**Westgate House London
Road
Isleworth
TW7 4AS**

£265,000

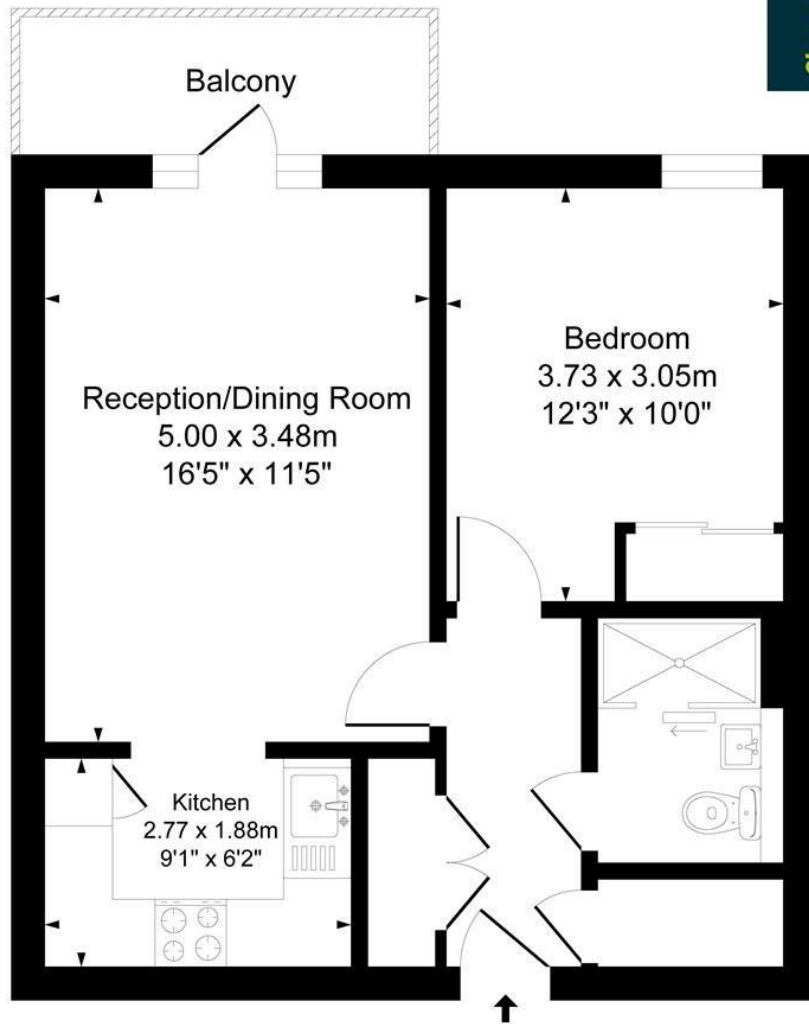
ChaseBuchanan



London Road TW7

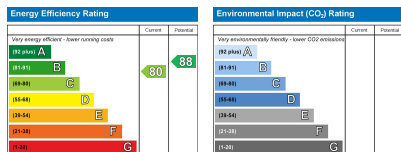
Approx. Gross Internal Floor Area
47.0 Sq M - 506 Sq Ft

ChaseBuchanan



First Floor

Illustration for identification purposes only, measurements are approximate, not to scale.



Care has been taken in the preparation of these particulars, however, their accuracy is not guaranteed and they do not form part of any contract. Measurements stated must be considered maximum.

- Viewings accompanied by Chase Buchanan
- Private balcony
- Communal roof terrace and gardens
- Well presented throughout
- First floor modern apartment
- Lift serviced block
- Close to transport links
- Chain free

This is a stunning and beautifully presented one double bedroom first floor apartment located in a secure and popular modern development close to Isleworth BR mainline station.

The apartment comprises a receiving hallway with two large storage cupboards leading to a large open reception/dining room with doors onto a private balcony and a modern fitted kitchen. There is a large master bedroom with ample storage and a contemporary family bathroom.

The property has the added benefit of a large roof terrace and a large communal garden to the rear. The property further benefits from a utility cupboard and lovely views from a balcony with seating for two.

Westgate House is situated on London Road, moments from Hounslow town centre and close to Isleworth train station, Hounslow bus station, and Hounslow East tube station, a 24 hour bus service to and from central London and Heathrow Airport direct to front door.

For more information or to book a viewing, please contact:

020 8758 1755

ChaseBuchanan

7 Odeon Parade, 480 London Road, Isleworth, Middlesex, TW7 4DE