



**Hillary Drive
Isleworth**

£640,000

ChaseBuchanan

Key Features

- Viewings accompanied by Chase Buchanan
- Detached family home
- Four good sized bedrooms
- Two bathrooms
- Large rear garden
- Garage and off street parking
- Private gated development
- Buy to let investment



Description

BUY TO LET INVESTORS ONLY Set within an exclusive gated development on the Isleworth/Twickenham borders is this four bedroom detached family home.

The accommodation on the ground floor comprises two reception rooms, a modern fitted kitchen, guest wc and an integral garage. The second floor boasts a master bedroom with an en-suite shower room, a further three bedrooms and a family bathroom. Further benefits include a driveway and a rear garden.

Hillary Drive is within walking distance of Twickenham mainline station, as well as being close to amenities and within a sought after school catchment area.

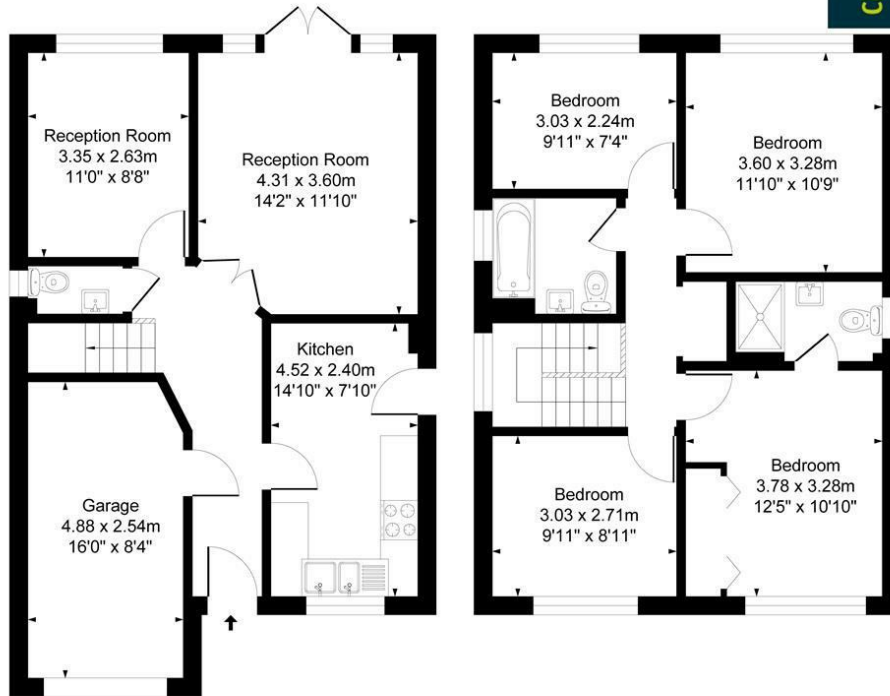




Hillary Drive TW7

Approx. Gross Internal Floor Area
118.5 Sq M - 1276 Sq Ft

ChaseBuchanan



Ground Floor
Approximate Floor Area
656.14 sq.ft
(60.96 sq.m)

First Floor
Approximate Floor Area
619.36 sq.ft
(57.54 sq.m)

Illustration for identification purposes only, measurements are approximate, not to scale.

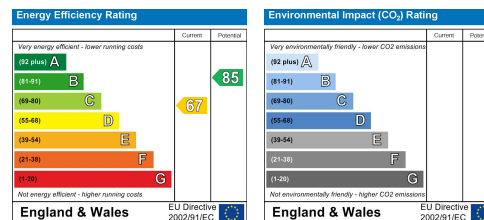
For more information or to book a viewing, please contact:

020 8758 1755

isleworth@chasebuchanan.london

480 London Road, TW7 4DE

Care has been taken in the preparation of these particulars, however, their accuracy is not guaranteed and they do not form part of any contract. Measurements stated must be considered maximum.



ChaseBuchanan