

**Twickenham Road  
Old Isleworth  
TW7 7ES**

**£1,199,950**

**ChaseBuchanan**



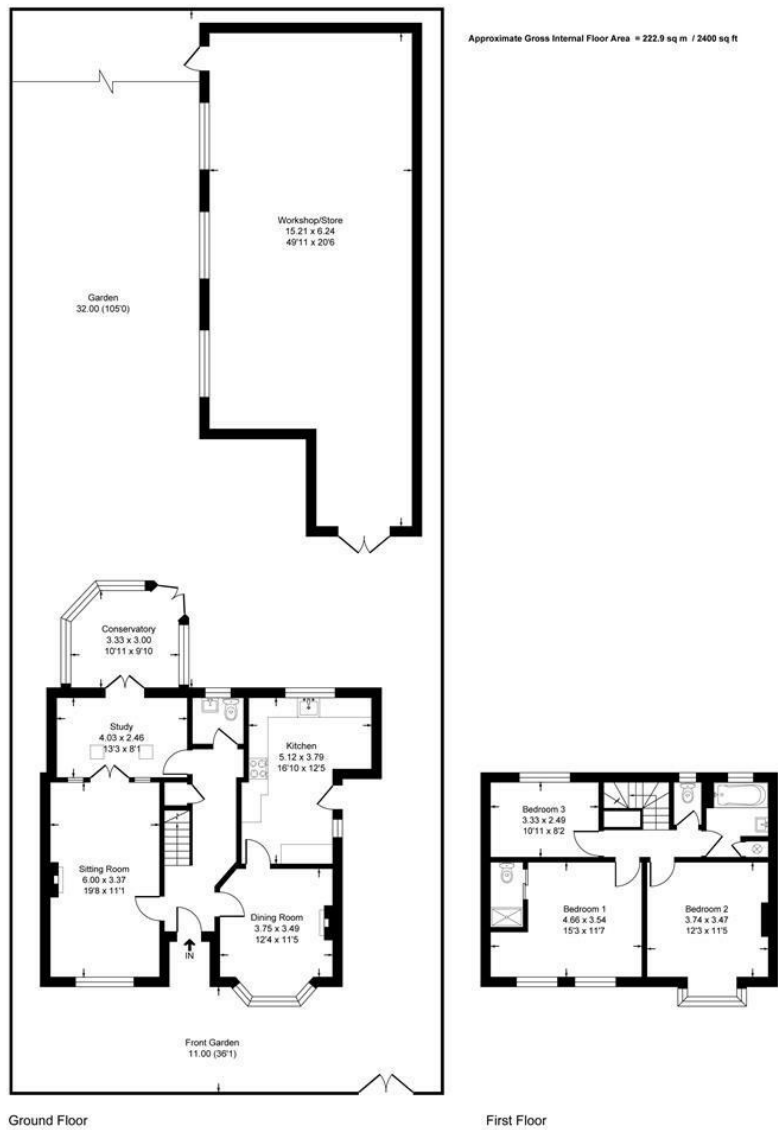
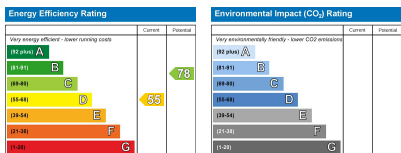


Illustration for identification purposes only, measurements are approximate, not to scale.



Care has been taken in the preparation of these particulars, however, their accuracy is not guaranteed and they do not form part of any contract. Measurements stated must be considered maximum.

- Viewings accompanied by Chase Buchanan
- Substantial plot
- Off street parking for several cars
- Original features throughout
- Gated detached residence
- Huge development potential
- Twickenham borders
- Detached workshop/store

A simply stunning Tudor style detached residence located behind gates on this substantial plot on the Twickenham borders of Isleworth.

The accommodation comprises an inviting hallway, bay-fronted dining room, a sitting room, a large kitchen, a study, a conservatory, and a guest WC on the ground floor, whilst the first floor offers three generous sized bedrooms, and a family bathroom with a separate WC. Further benefits include original features throughout and huge potential for development (subject to planning).

Externally there is a large front garden, a driveway for several cars, and a large rear garden with a detached workshop/store.

For more information or to book a viewing, please contact:

020 8758 1755

**ChaseBuchanan**

7 Odeon Parade, 480 London Road, Isleworth, Middlesex, TW7 4DE