



**Wood Lane
Isleworth**

£91,000

ChaseBuchanan

Key Features

- Viewings accompanied by Chase Buchanan
- 35% shared ownership
- Lift serviced
- Allocated parking
- Close to transport links
- Chain free



Description

35% SHARED OWNERSHIP - A stunning modern top floor apartment, located in a quiet development next to Osterley Sports & Athletics Centre.

The accommodation comprises an open plan living room/modern kitchen, double bedroom with a built in wardrobe and a modern bathroom. Further benefits include a further two storage cupboards, loft storage, lift to all floors, allocated parking space, communal gardens and a bike shed. There is also an option to purchase 100% ownership for £260,000.

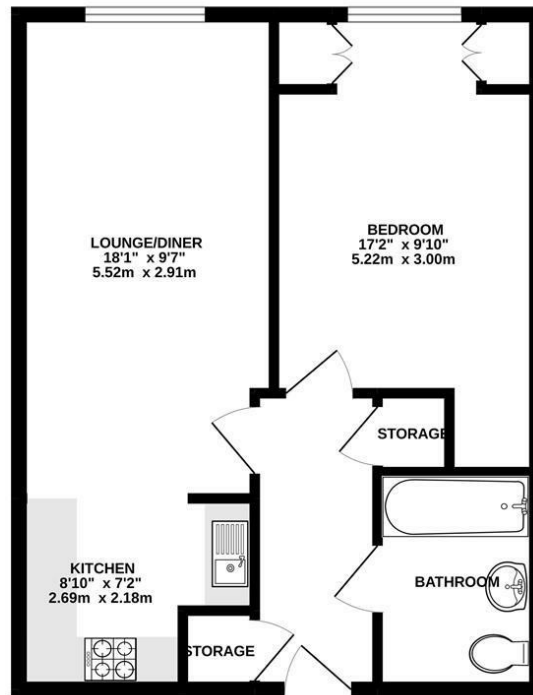
Wood Lane is within 0.42 miles from Isleworth BR Mainline Station and 0.5 miles from Osterley Tube Station (Piccadilly Line), and close to the A4, M4 and M25 with its routes into London and Heathrow.

An appointment to view is highly recommended via the vendors sole agents Chase Buchanan.



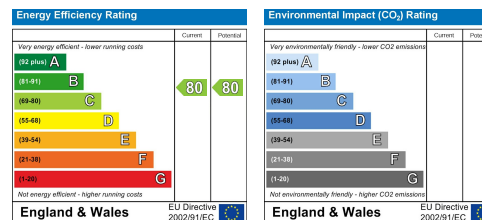


THIRD FLOOR
490 sq.ft. (45.5 sq.m.) approx.



TOTAL FLOOR AREA: 490 sq.ft. (45.5 sq.m.) approx.
Produced solely for Chase Buchanan.
Made with Metropix ©2022

Care has been taken in the preparation of these particulars, however, their accuracy is not guaranteed and they do not form part of any contract. Measurements stated must be considered maximum.



For more information or to book a viewing, please contact:

020 8758 1755

isleworth@chasebuchanan.london

480 London Road, TW7 4DE

ChaseBuchanan