



Step inside to discover a stylish, contemporary four double bedroom home with versatile accommodation arranged over three floors, giving a light and spacious interior, ideal for modern family life.

Haytor Vale | Bovey Tracey | TQ13 9XR



thoroughly good property agents



PROPERTY TYPE

House



SIZE

1876 sq'ft



LOCATION

Village



AGE

1980s to 1990s



BEDROOMS

4



RECEPTION ROOMS

3



BATHROOMS

1

Cloakrooms

2



WARMTH

LPG Central Heating



PARKING

Garage, Off Road Parking



OUTSIDE SPACE

Garden



EPC
24 F



COUNCIL TAX BAND

D



in a nutshell...

- Drawing Room with Wood Burning Stove
- Living/Dining Room with Stove
- Beautiful Garden Room
- Kitchen
- Utility and Cloakroom
- 4 Double Bedrooms
- Spacious Family Bathroom
- 2 Further Cloakrooms
- Garage and ample Parking





the details...

The welcoming entrance hall features a staircase rising to the upper and lower floors, a convenient cloakroom with a pedestal basin and hidden-cistern WC, internal access to the integral garage, which is equipped with lighting, power, and barn-style double doors opening to the driveway. Also on this floor, is the spacious drawing room which enjoys a serene ambiance with dual-aspect windows flooding the space with natural light. A wood-burning stove adds warmth and charm, creating a cozy retreat. Completing this floor is an L-shaped double bedroom, beautifully lit by a Juliet balcony that frames peaceful views of the garden and rolling countryside.

Downstairs, the expansive L-shaped living and dining area serves as the hub of the home, ideal for both relaxed family living and entertaining. A second wood-burning stove sits on a slate hearth, perfect for winter evenings. A wide opening flows into a stunning garden room with bi-fold doors and a lantern skylight, drawing in countryside views and providing direct access to the garden. The generously sized kitchen is both practical and stylish, with underfloor heating beneath tiled flooring, ample worktops, a walk-in larder, and space for a range cooker. A double corner sink, integral dishwasher, and room for an American-style fridge/freezer add to the thoughtful design. A utility room houses laundry appliances, an additional WC, and a washbasin.

The top floor is home to the master bedroom, a spacious double with tranquil views over the garden, meadow, and woodland beyond. A luxurious Jack-and-Jill bathroom with underfloor heating, featuring a porcelain-tiled floor, whirlpool bath with shower overhead, vanity unit with inset basin, hidden-cistern WC, and bidet, is also access from the landing. Two additional double bedrooms complete the upper floor, the one to the rear affording lovely views. The galleried landing with a Velux skylight and loft access offers additional storage, with pull-down ladder adding a final touch of practicality.

The rear garden is a true highlight, split across levels for maximum enjoyment. From the kitchen, step onto a paved terrace perfect for alfresco dining. Stone steps wind down beside a flowering Magnolia to a lush lawn and slate-paved patio, ideal for entertaining. Whether hosting a barbecue or firing up the pizza oven, this garden invites you to relax and unwind. A timber shed offers storage, and a rear gate opens onto a bridal path with direct access to walking paths into countryside.



Days Folley, Haytor, Newton Abbot, TQ13

Approximate Area = 1711 sq ft / 158.9 sq m

Limited Use Area(s) = 15 sq ft / 1.3 sq m

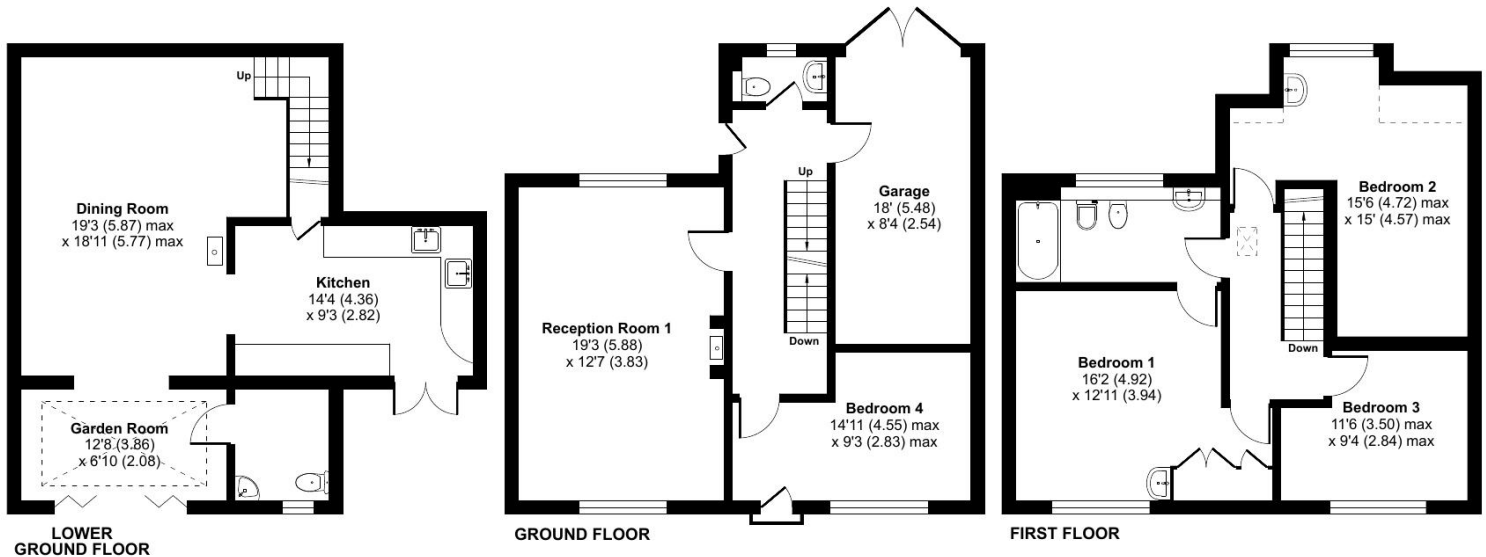
Garage = 150 sq ft / 13.9 sq m

Total = 1876 sq ft / 174.1 sq m

For identification only - Not to scale



Denotes restricted head height



Floor plan produced in accordance with RICS Property Measurement 2nd Edition, Incorporating International Property Measurement Standards (IPMS2 Residential). © nctechcom 2025. Produced for Ashtons Complete (Complete Property). REF: 1282723



Our note. For clarification we have prepared these sales particulars as a general guide and have not carried out a detailed survey nor tested the services, appliances or fittings. Room sizes should not be relied upon for carpets or furnishings. If there are any important matters which are likely to affect your decision to buy, please contact us before viewing this property. These particulars, whilst believed to be accurate, are set out as a general outline only for guidance and do not constitute any part of an offer or contract. Intending purchasers should not rely on them as statements of representation of fact, but must satisfy themselves by inspection or otherwise as to their accuracy. No person in the employment of Complete Property Services has the authority to make or give any representation or warranty in respect of the property.

SKETCH PLAN FOR ILLUSTRATIVE PURPOSES ONLY. All measurements and sizes and locations of walls, doors, window fittings and appliances are shown conventionally and are approximate only and cannot be regarded as being a representation either by the Seller or his Agent. We hope that these plans will assist you by providing you with a general impression of the layout of the accommodation. The plans are not to scale nor accurate in detail. © Unauthorised reproduction prohibited.

As part of the service we offer we may recommend ancillary services to you which we believe will help with your property transaction. We wish to make you aware that should you decide to proceed we will receive a referral fee. This could be a fee, commission, payment or other reward. We will not refer your details unless you have provided consent for us to do so. You are not under any obligation to provide us with your consent or to use any of these services, but where you do you should be aware of the following referral fee information. You are also free to choose an alternative provider. To find out more about this, please speak to a member of the team.



the location...

The Idyllic location of Haytor Vale within the beautiful Dartmoor National Park makes it a perfect base for walking, hiking, cycling, horse riding, or just relaxing and enjoying the wonderful countryside. The village has a highly regarded local Inn and South Devon's famous and stunning coastline is only a short distance away. The moorland town of Bovey Tracey with all its amenities is approximately 4 miles and from there is easy access to the Devon Expressway linking the cities of both Exeter & Plymouth.

Shopping

Local shop: Ilsington 1.5 mile

Town Centre: Bovey Tracey 4 miles

Newton Abbot: 7.3 miles

Exeter: 18 miles

Relaxing

Beach: Teignmouth 13.2 miles

Haytor, Dartmoor: 1 mile

The Rock Inn: 200 meters

Bovey Tracey Golf Club: 4.5 miles

Ilsington Hotel – Spa and gym: 0.5 mile

Swimming pool, tennis courts and cricket etc: 4 miles

Travel

Bus stop: 0.5 mile

Train station: Newton Abbot 7.5 miles

Main travel link: A38 Drumbridges 4.5 miles

Exeter Airport: 23.5 miles

Schools

Ilsington C of E Primary School: 1.8 miles

Blackpool Primary School: 4.1 miles

South Dartmoor Community College (bus): 6.3 miles

Stover School (private): 5.4 miles

Please check Google maps for exact distances and travel times.

Property postcode: TQ13 9XR

how to get there...

From Bovey Tracey take the B3387 towards Haytor and Widecombe. Keep on this road and at Haytor turn left sign posted Ilsington and immediately left again towards Haytor Vale. Continue down the hill where the property can be found on the left hand side, before The Rock Inn.





Need a more complete picture? Get in touch with your local branch...

Tel [01626 832 300](tel:01626832300)
Email bovey@completeproperty.co.uk
Web completeproperty.co.uk

Complete
Emlyn House
Fore Street
Bovey Tracey
TQ13 9AD

Are you selling a property too? Call us to get a set of property details like these...

selling

letting

land &
new homes

signature
homes

complete.