



This beautiful barn conversion has been converted with thought and flair to create a spacious family home benefiting from many character features including wooden flooring, beams and a woodburner. The current owners have refurbished the kitchen, ensuite and family shower room and an internal viewing is recommended to appreciate the barn's full merits.

6 Otter Court | Ingsdon | TQ12 6NW





PROPERTY TYPE

Barn Conversion



SIZE

1,691 sq ft



LOCATION

Rural Hamlet



AGE

1980s to 1990s



BEDROOMS

4



RECEPTION ROOMS

1



BATHROOMS

2



WARMTH

Oil Central Heating



PARKING

Garage, Off Road Parking,
EV Charging



OUTSIDE SPACE

Garden



EPC RATING

D



COUNCIL TAX BAND

E



in a nutshell...

- Sitting Room with Woodburner and Bi-Fold Doors
- Kitchen Dining Room with step in Larder
- Cloakroom
- Mast Bedroom Ensuite
- Two further Bedrooms
- Study/Bedroom 4
- Family Shower Room
- Garage with Mezzanine





the details...

On entering the property a hall gives access to the sitting room, kitchen/dining room and stairs to the first floor and a lower level, which has a door leading out into the garden. There is a convenient cloakroom fitted with a hand basin and low level w.c. The spacious sitting room is warm and welcoming, benefiting from a wood burning stove, a lovely focal point to come home to after a countryside walk and bi-fold doors lead out onto an astro-turf terrace, a particular feature for the summer and warmer winter occasions. The sizeable kitchen/dining room is fitted with a range of base units and a built-in larder style cupboard offering a comprehensive range of storage. The integral appliances include a double oven and an oil-fired Rayburn which serves the central heating, hot water and cooking facility. There are spaces for a dishwasher, an upright fridge/freezer and a microwave. The dining area offers space for a family-sized table and chairs and with bi-fold doors leading out onto the decked terrace, a lovely area to enjoy not only formal but informal meals with family and friends. From the kitchen a door leads through into the integral garage fitted with an electric up and over door. Stairs lead up into a useful mezzanine level, ideal for storage or to use as an office or hobbies room.

On the first floor is a principal bedroom fitted with a range of wardrobes offering hanging and storage space, Velux windows and a door to the ensuite which comprises a shower cubicle, vanity hand basin, w.c. and heated towel rail. There are two further bedrooms and a third which is currently furnished and used as an office. Completing the accommodation is the family shower room fitted with a shower cubicle, vanity hand basin, w.c and heated towel rail.

Outside to the rear the garden is mainly laid to lawn and offers a range of tranquil seating areas, ideal for watching the sun setting and enjoying an alfresco meal with family and friends. The garden houses a useful workshop, garden shed and a convenient log store outside the garage door.

Services - Oil central heating, mains electricity, solar panels, private drainage

Broadband and Mobile Signal - Please visit <https://checker.ofcom.org.uk> for availability.



Otter Court, Ingsdon, Newton Abbot, TQ12

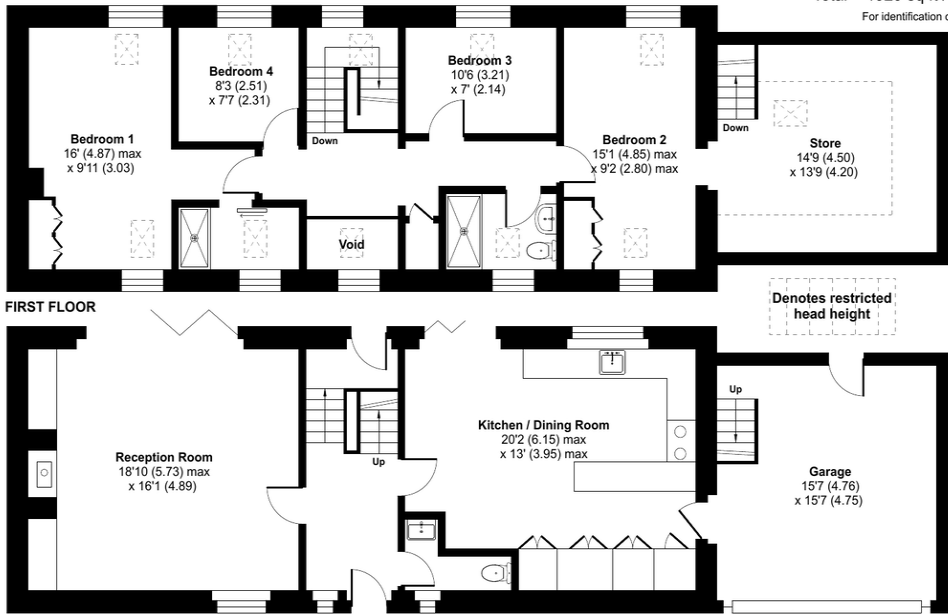
Approximate Area = 1591 sq ft / 147.8 sq m (excludes void)

Limited Use Area(s) = 100 sq ft / 9.2 sq m

Garage = 238 sq ft / 22.1 sq m

Total = 1929 sq ft / 179.1 sq m

For identification only - Not to scale



FIRST FLOOR

GROUND FLOOR



Floor plan produced in accordance with RICS Property Measurement 2nd Edition, incorporating International Property Measurement Standards (IPMS2 Residential). © nitchecom 2025. Produced for Ashtons Complete (Complete Property). REF: 1230045



Our note. For clarification we have prepared these sales particulars as a general guide and have not carried out a detailed survey nor tested the services, appliances or fittings. Room sizes should not be relied upon for carpets or furnishings. If there are any important matters which are likely to affect your decision to buy, please contact us before viewing this property. These particulars, whilst believed to be accurate, are set out as a general outline only for guidance and do not constitute any part of an offer or contract. Intending purchasers should not rely on them as statements of representation of fact, but must satisfy themselves by inspection or otherwise as to their accuracy. No person in the employment of Complete Property Services has the authority to make or give any representation or warranty in respect of the property.

SKETCH PLAN FOR ILLUSTRATIVE PURPOSES ONLY. All measurements and sizes and locations of walls, doors, window fittings and appliances are shown conventionally and are approximate only and cannot be regarded as being a representation either by the Seller or his Agent. We hope that these plans will assist you by providing you with a general impression of the layout of the accommodation. The plans are not to scale nor accurate in detail. © Unauthorised reproduction prohibited.

As part of the service we offer we may recommend ancillary services to you which we believe will help with your property transaction. We wish to make you aware that should you decide to proceed we will receive a referral fee. This could be a fee, commission, payment or other reward. We will not refer your details unless you have provided consent for us to do so. You are not under any obligation to provide us with your consent or to use any of these services, but where you do you should be aware of the following referral fee information. You are also free to choose an alternative provider. To find out more about this, please speak to a member of the team.



the location...

The property is located close to the thriving market town of Newton Abbot which offers a host of facilities including primary and secondary schools, an array of shops and supermarkets and a host of other facilities that you would expect to find in a town of this size. Newton Abbot has a main line Railway Station to London Paddington and offers easy access to the Devon Expressway and the M5.

Shopping

Local Shop Liverton – 1.9 mile
Town centre: Ashburton 3.5 miles
Newton Abbot 3.8 miles
Exeter: 18 miles

Relaxing

Beach: Teignmouth 9.7 miles
Leisure centre: 3.3 miles
Golf: Stover 3.1 miles
Dartmoor: 4 miles

Travel

Bus stop: 0.75 mile
Train station: Newton Abbot 4.3 miles
Main travel link: A38 1.9 mile
Airport: Exeter 20.5 miles

Schools

Blackpool Primary School: 1.3 miles
South Dartmoor Community College: 4 miles
Stover School: approx. 3 miles
Please check Google maps for exact distances and travel times.

Property postcode: **TQ12 6NW**

how to get there...

From Drumbrides take the Bovey Tracey/ Liverton turn off and following the signs to Liverton. Proceed through the village staying on this road for some distance and turn left by the Welcome Stanger Inn. Follow the road without deviation, past the bungalow on the left and proceed into Ingsdon. Take the left hand turn down towards Otter Court, taking the second entrance at the bottom into the Courtyard, where the property can be found immediately in front of you.





Need a more complete
picture? Get in touch with
your local branch...

Tel 01626 832 300
Email bovey@completeproperty.co.uk
Web completeproperty.co.uk

Complete
Emlyn House
Fore Street
Bovey Tracey
TQ13 9AD

Are you selling a property too? Call us to get a set of property details like these...

selling

letting

land &
new homes

signature
homes

complete.