



A beautifully maintained and presented home which has been extended and refurbished to provide comfortable, light and airy accommodation with driveway parking, enclosed garden to rear, set in this small cul-de-sac on the edge of the village, which offers good local facilities. NO ONWARD CHAIN

10 Laskeys Heath | Liverton | TQ12 6PH

complete.

thoroughly good property agents



PROPERTY TYPE

Semi Detached House



SIZE

792 sq'



LOCATION

Village



AGE

1980s to 1990s



BEDROOMS

2



RECEPTION ROOMS

2



BATHROOMS

1



WARMTH

Gas Central Heating



PARKING

Off Road Parking



OUTSIDE SPACE

Garden



EPC RATING

D 66



COUNCIL TAX BAND

C



in a nutshell...

- Kitchen
- Sitting Room
- Dining Room
- 2 Double Bedrooms
- Family Bathroom and ground floor Cloakroom
- Double Glazing and Central Heating
- Private Parking
- Gardens to front and Rear
- NO ONWARD CHAIN





the details...

The front door enters into the entrance hall with access to the cloakroom fitted with a w.c and hand basin. The kitchen is fitted with a range of pale green wall and base units with white worktops over, incorporating a stainless steel sink with mixer tap over. Spaces for cooker, washing machine and upright fridge/freezer. The sitting room with a window to the side, has a spiral staircase in the corner leading to the first floor, a wall mounted air conditioning/warming unit and has two openings through to the garden/dining room. A lovely light and open space, with a large window looking to the rear with patio doors leading out into the garden, a relaxing room to entertain family and friends, or just unwind at the end of a busy

On the first floor the two smaller bedrooms have been merged into one, so this floor now comprises two good sized double bedrooms. Bedroom one has two windows to the front offering views across the village to the countryside beyond. The second bedroom again with two windows, but to the rear, offers views to the neighbour's field and is fitted with a range of built in wardrobes, offering hanging and storage space. Completing the accommodation is the bathroom which has been upgraded to provide a panelled bath with shower over, a close coupled w.c. fitted within a range of base units offering a good amount of storage with display shelving above and incorporating a wash hand basin.

To the front of the property is an area of gravel beside the steps leading to the front entrance. To the side of the property is a driveway offering parking for several cars. To the rear, the garden is enclosed and laid to chippings for ease of maintenance. There are two useful wooden sheds, ideal for storage and a workshop, both benefitting from power.

This lovely home is available for immediate occupation, with no onward chain





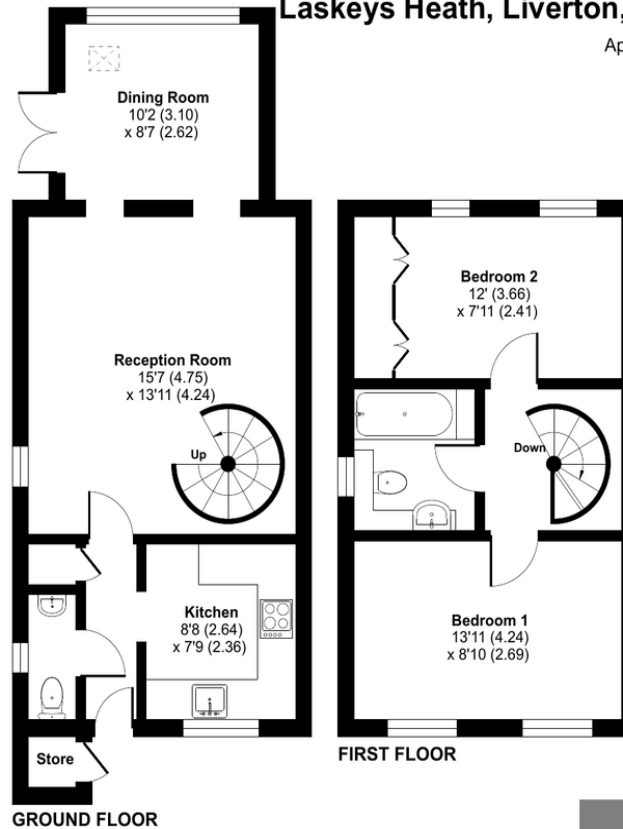
Laskeys Heath, Liverton, Newton Abbot, TQ12

Approximate Area = 792 sq ft / 73.5 sq m

Outbuilding = 6 sq ft / 0.5 sq m

Total = 798 sq ft / 74 sq m

For identification only - Not to scale



Floor plan produced in accordance with RICS Property Measurement Standards incorporating International Property Measurement Standards (IPMS2 Residential). © nischecom 2024. Produced for Ashlons Complete (Complete Property). REF: 1191258



Our note. For clarification we have prepared these sales particulars as a general guide and have not carried out a detailed survey nor tested the services, appliances or fittings. Room sizes should not be relied upon for carpets or furnishings. If there are any important matters which are likely to affect your decision to buy, please contact us before viewing this property. These particulars, whilst believed to be accurate, are set out as a general outline only for guidance and do not constitute any part of an offer or contract. Intending purchasers should not rely on them as statements of representation of fact, but must satisfy themselves by inspection or otherwise as to their accuracy. No person in the employment of Complete Property Services has the authority to make or give any representation or warranty in respect of the property.

SKETCH PLAN FOR ILLUSTRATIVE PURPOSES ONLY. All measurements and sizes and locations of walls, doors, window fittings and appliances are shown conventionally and are approximate only and cannot be regarded as being a representation either by the Seller or his Agent. We hope that these plans will assist you by providing you with a general impression of the layout of the accommodation. The plans are not to scale nor accurate in detail. © Unauthorised reproduction prohibited.

As part of the service we offer we may recommend ancillary services to you which we believe will help with your property transaction. We wish to make you aware that should you decide to proceed we will receive a referral fee. This could be a fee, commission, payment or other reward. We will not refer your details unless you have provided consent for us to do so. You are not under any obligation to provide us with your consent or to use any of these services, but where you do you should be aware of the following referral fee information. You are also free to choose an alternative provider. To find out more about this, please speak to a member of the team.



the location...

Liverton is a village on the edge of Dartmoor National Park. The A38 is nearby and provides dual carriageway access to both Plymouth and Exeter and the motorway network beyond. Bovey Tracey is some 3 miles away and provides shopping facilities for day to day needs, whilst the market town of Newton Abbot, approximately 5 miles away providing a more comprehensive range of shops, superstores, schools, hospital and sporting facilities together with a railway station offering connections to London Paddington and Waterloo.

Shopping

Late night pint of milk: Marks and Spencer Garage 0.5 mile

Town centre: Bovey Tracey 2.5 miles

Supermarket: Co-Op 1.5 miles

Newton Abbot 4.8 miles/Exeter 15.6 miles/Ashburton 5.3 miles

Relaxing

Beach: Teignmouth 11 miles

Park in Bovey Tracey: 2.5 miles

Tennis court, swimming pool etc: 2 miles

Golf: Stover 1 mile

Haytor Dartmoor: 5 miles

Travel

Bus stop: Benedicts Road

Train station: Newton Abbot 5 miles

Main travel link: A38 Drumbridges 0.5 mile

Airport: Exeter 19 miles

Schools

Blackpool Primary School: 0.6 mile

Stover School: 1.5 miles

South Dartmoor Community College: 5 miles (school bus)

Please check Google maps for exact distances and travel

times. **Property postcode: TQ12 6PH**

how to get there...

From the A38 take the Drumbridges exit and follow the signs to Liverton. Take the first turning on the right signposted Ilington, pass the Star Inn and take the third turning left into Shapley way and then right into Laskeys Heath where you will find the property in front of you.





Need a more complete picture? Get in touch with your local branch...

Tel [01626 832 300](tel:01626832300)
Email bovey@completeproperty.co.uk
Web completeproperty.co.uk

Complete
Emlyn House
Fore Street
Bovey Tracey
TQ13 9AD

Are you selling a property too? Call us to get a set of property details like these...

selling

letting

land &
new homes

signature
homes

complete.