



A superb, semi-detached cottage which has been tastefully refurbished to create light and airy accommodation with parking, and an enclosed front garden, in a tranquil, semi-rural location, walking distance from popular pubs in the village of Haytor Vale, within the Dartmoor National Park.

Haytor Vale | Bovey Tracey | TQ13 9XR





PROPERTY TYPE

End of Terrace



SIZE

973 sq ft



LOCATION

Village, Haytor Vale



AGE

Turn of the Century



BEDROOMS

3



RECEPTION ROOMS

1



BATHROOMS

1



WARMTH

LPG Central Heating



PARKING

Off Road Parking



OUTSIDE SPACE

Patio



EPC RATING

30 F



COUNCIL TAX BAND

D



in a nutshell...

- Beautifully fitted kitchen
- Dining Areas
- Three Double Bedrooms
- Modern Family Bathroom
- Entrance Porch/Conservatory
- Sun Terrace to Front
- Shrub Beds
- Parking for two cars
- NO ONWARD CHAIN





the details...

Inside, this fabulous cottage is immaculately presented with light and neutral decor throughout, giving a modern feel, and it is warm and welcoming with LPG central heating, double glazing, and a woodburning multifuel stove.

The accommodation briefly comprises, on the ground floor, a large entrance porch/conservatory, which makes a nice place to sit and enjoy the peaceful surroundings and summer sunshine. A superb open-plan living space with LVT flooring that continues throughout the ground floor, an under-stairs cupboard, and a wonderful solid-fuel stove that makes a fabulous focal point and feature for the room. The modern kitchen/dining room, is elegantly fitted with beautiful solid-granite worktops, a range of cupboards providing ample storage, a fan-oven, gas hob and filter hood above, a Belfast sink with a mixer tap, space for an upright fridge/freezer and space and plumbing beneath the worktop for a washing machine and slimline dishwasher. A wall-mounted condensing combi-boiler, hidden within a wall cabinet, provides the central heating and hot water on demand, and there is plenty of space for a table and seating perfect for mealtimes, with additional seating on the window seat from where there is a fabulous view to the front. At the rear of the living space is a hallway with a staircase rising to the first floor, a convenient ground floor cloakroom with a WC and basin, and a door leading out to the rear.

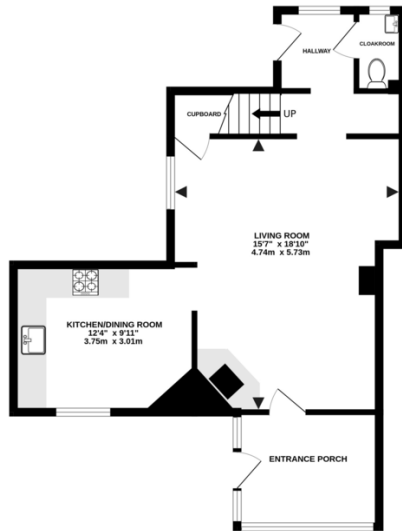
Upstairs, there are three light and airy bedrooms with painted floorboards, all doubles with built in storage and the two front bedrooms enjoying fabulous views over the village and the paddock opposite. Completing the accommodation is a modern family bathroom with a bath, shower over, a WC, a pedestal basin, and an illuminated mirror.

Outside, at the front of the property is a split-level terrace of paving making a wonderful space to enjoy a picnic or drinks with friends and family in the peaceful surroundings. There are beds of shrubs and plants, an enclosure hiding the LPG gas tank from view, and a drive-through parking area with room for two cars with double gates at both ends enclosing the garden and making it safe for both children and pets

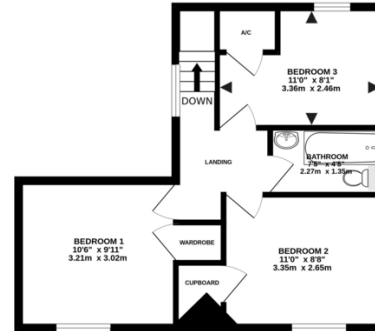


the floorplan...

GROUND FLOOR
553 sq.ft. (51.4 sq.m.) approx.



1ST FLOOR
420 sq.ft. (39.0 sq.m.) approx.



TOTAL FLOOR AREA - 973 sq.ft. (90.4 sq.m.) approx.

Whilst every attempt has been made to ensure the accuracy of the floorplan contained here, measurements of doors, windows, rooms and any other items are approximate and no responsibility is taken for any error, omission or mis-statement. This plan is for illustrative purposes only and should be used as such by any prospective purchaser. The services, systems and appliances shown have not been tested and no guarantee as to their operability or efficiency can be given.
Made with Metropix C2024



Our note. For clarification we have prepared these sales particulars as a general guide and have not carried out a detailed survey nor tested the services, appliances or fittings. Room sizes should not be relied upon for carpets or furnishings. If there are any important matters which are likely to affect your decision to buy, please contact us before viewing this property. These particulars, whilst believed to be accurate, are set out as a general outline only for guidance and do not constitute any part of an offer or contract. Intending purchasers should not rely on them as statements of representation of fact, but must satisfy themselves by inspection or otherwise as to their accuracy. No person in the employment of Complete Property Services has the authority to make or give any representation or warranty in respect of the property.

SKETCH PLAN FOR ILLUSTRATIVE PURPOSES ONLY. All measurements and sizes and locations of walls, doors, window fittings and appliances are shown conventionally and are approximate only and cannot be regarded as being a representation either by the Seller or his Agent. We hope that these plans will assist you by providing you with a general impression of the layout of the accommodation. The plans are not to scale nor accurate in detail. © Unauthorised reproduction prohibited.

As part of the service we offer we may recommend ancillary services to you which we believe will help with your property transaction. We wish to make you aware that should you decide to proceed we will receive a referral fee. This could be a fee, commission, payment or other reward. We will not refer your details unless you have provided consent for us to do so. You are not under any obligation to provide us with your consent or to use any of these services, but where you do you should be aware of the following referral fee information. You are also free to choose an alternative provider. To find out more about this, please speak to a member of the team.



the location...

The Idyllic location of Haytor Vale within the beautiful Dartmoor National Park makes it a perfect base for walking, hiking, cycling, horse riding, or just relaxing and enjoying the wonderful countryside. The village has a highly regarded local Inn and South Devon's famous and stunning coastline is only a short distance away. The moorland town of Bovey Tracey with all its amenities is approximately 4 miles and from there is easy access to the Devon Expressway linking the cities of both Exeter & Plymouth.

Shopping

Local shop: Islington 1.5 mile
Town Centre: Bovey Tracey 4 miles
Newton Abbot: 7.3 miles
Exeter: 18 miles

Relaxing

Beach: Teignmouth 13.2 miles
Haytor, Dartmoor: 1 mile
Rock Country Inn: 200 meters
Bovey Tracey Golf Club: 4.5 miles
Islington Hotel – Spa and gym: 0.5 mile
Swimming pool, tennis courts and cricket etc: 4 miles

Travel

Bus stop: 0.5 mile
Train station: Newton Abbot 7.5 miles
Main travel link: A38 Drumbridges 4.5 miles
Exeter Airport: 23.5 miles

Schools

Islington C of E Primary School: 1.8 miles
Blackpool Primary School: 4.1 miles
South Dartmoor Community College (bus): 6.3 miles
Stover School (private): 5.4 miles

Please check Google maps for exact distances and travel times.

Property postcode: **TQ13 9XR**

how to get there...

From Bovey Tracey take the B3387 towards Haytor and Widecombe. Keep on this road and at Haytor turn left sign posted Islington and immediately left again towards Haytor Vale. Continue down the road and at the bottom turn first left, before the row of houses, continue down the lane and the property is first on the left.





Need a more complete picture? Get in touch with your local branch...

Tel [01626 832 300](tel:01626832300)
Email bovey@completeproperty.co.uk
Web completeproperty.co.uk

Complete
Emlyn House
Fore Street
Bovey Tracey
TQ13 9AD

Are you selling a property too? Call us to get a set of property details like these...

selling

letting

land &
new homes

signature
homes

complete.