

Meux Close, West Cheshunt



**** CHAIN FREE ** A FOUR BEDROOM, TWO BATHROOM (ONE EN-SUITE), DETACHED FAMILY HOME, WITH SPACIOUS ACCOMMODATION & A SOUTH FACING GARDEN BACKING ON TO OPEN GREENFIELD LAND ****

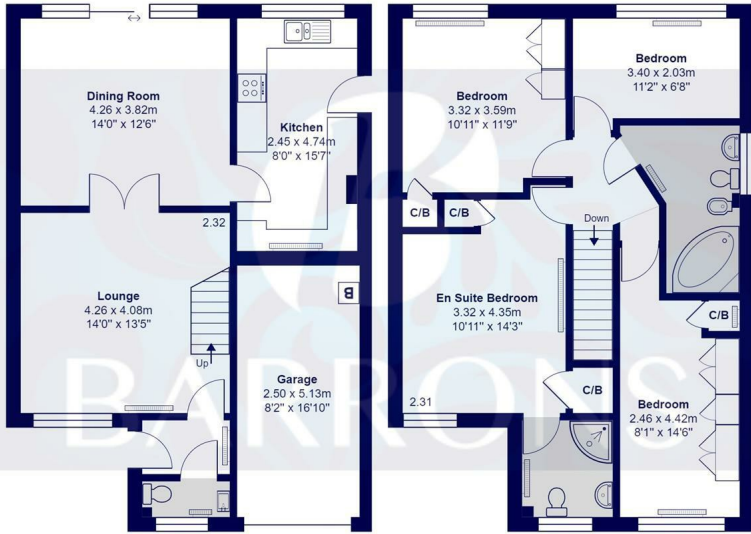
Welcome to this charming FOUR BEDROOM, TWO BATHROOM, detached family home, located in the desirable Meux Close, West Cheshunt. Situated in a sought-after area, with a selection of highly regarded schools within walking distance, this charming home provides a peaceful retreat from the hustle and bustle of everyday life.

The generous square footage provides spacious and versatile accommodation, perfect for entertaining guests or simply relaxing with your family. The accommodation has been arranged over two floors and comprises of: ENTRANCE HALLWAY, 14'0 X 13'5 LOUNGE, 14'0 X 12'6 DINING ROOM, 15'7 X 8'0 KITCHEN, GROUND FLOOR W.C. On the FIRST FLOOR there are FOUR well proportioned bedrooms measuring: 14'3 x 10'11 BEDROOM ONE with (EN-SUITE), 11'9 x 10'11 BEDROOM TWO, 14'6 X 8'1 BEDROOM THREE. 11'2 X 6'8 BEDROOM FOUR and a SPAICOUS FAMILY BATHROOM off the landing. Outside, the established garden has been laid to lawn and enjoys a SOUTH FACING ASPECT. The property is approached via its own driveway which provides access to the 16'10 x 8'2 INTEGRAL GARAGE.

MEUX CLOSE, is ideally situated with fine country walks, recreational parkland and highly regarded schooling all being only moments away. There are direct over ground rail links to London Moorgate and London Liverpool Street from Cuffley and Cheshunt respectively.

Property Price £595,000





Ground Floor
Area: 64.8 m² ... 697 ft²

First Floor
Area: 64.7 m² ... 697 ft²



Meux Close, Hertfordshire EN7

Total Area: 129.5 m² ... 1394 ft² Inc. Garage
All measurements are approximate and for display purposes only

- A FOUR BEDROOM, TWO BATHROOM (ONE EN-SUITE) DETACHED FAMILY HOME
- SPACIOUS ACCOMMODATION WITH BRIGHT AND AIRY INTERIORS
- SOUTH FACING GARDEN BACKING ON TO OPEN GREENFIELD LAND
- 14'0 X 13'5 LOUNGE
- 14'0 X 12'6 DINING ROOM
- 15'7 X 8'0 KITCHEN
- FOUR GOOD SIZE BEDROOMS
- 16'10 X 8'2 INTEGRAL GARAGE
- OWN DRIVEWAY
- CHAIN FREE



- Extensive local knowledge • Professional personal service • Full colour property particulars • Bespoke Marketing
- Major Website Portals • 24 Hour feedback pledge • Latest Technology

25 The Old Building, Bishops College, Churchgate, Hertfordshire, EN8 9XQ • t: 01707 877808 • t: 01992 845 842 • www.barronsresidential.co.uk



Disclaimer: "these property particulars, including floor plans, are set out as a general outline only for guidance and do not constitute any part of an offer or contract. Please note that all measurements above have been taken with a sonic tape measure and therefore may be subject to a small margin of error. A buyer is advised to obtain verification from their solicitor or surveyor. The agent has not tested any apparatus, equipment, fixture and fittings or services and therefore cannot verify that they are in working order or fit for the purpose" All enquiries and negotiations must be carried out through Barrons Residential.