

# Woodview, Cuffley



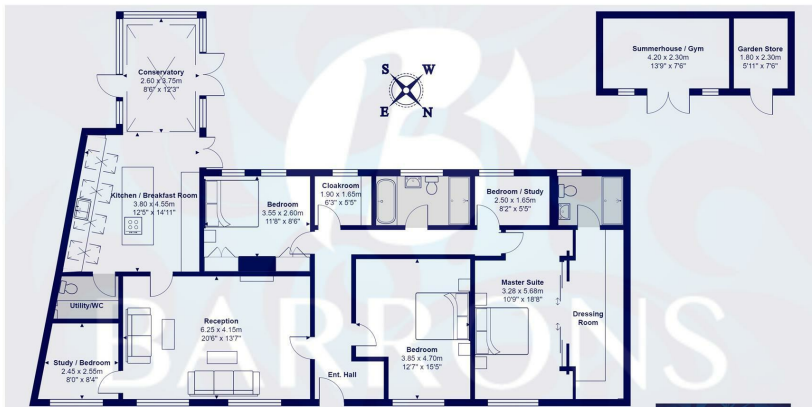
**\*\* A SPACIOUS BUNGALOW OCCUPYING A GENEROUS CORNER PLOT WITH WELL PRESENTED INTERIORS THROUGHOUT \*\***

An exceptional 4 bedroom detached bungalow, occupying a generous corner plot in this highly sought after turning off Hill Rise, located in the heart of Cuffley Village. This charming home provides bright and airy interiors, enhanced by a wealth of highly individual modern furnishings - there is also excellent potential to enlarge the property further, subject to the usual planning consent.

A main feature of this fine property is the stunning German engineered "Schuller" Kitchen and Breakfast Room with integrated 'Siemens' appliances measuring 14'11 x 12'05 complemented by the open plan 12'3 x 8'6 Conservatory, providing a bright and airy entertaining space. The versatility of the accommodation is another key feature to this home, currently arranged with three double bedrooms, 8.2 x 5'5 Study and a 8'4 x 8'0 second reception room (bedroom 4) . The Master Bedroom suite is a stunning room measuring 18'8 x 10'09 with concealed dressing room and spacious en-suite. Outside, the landscaped gardens enjoy a sunny SOUTH WEST facing aspect providing the ideal space for alfresco dining and entertaining. This charming bungalow occupies a highly accessible location about 1 mile from Cuffley Village, with its array of local amenities and Railway Station providing excellent transport links to London Moorgate and Kings Cross. Access to the M25 (junc. 24), A1(M) and A10 are all within easy reach along with an excellent selection of comprehensive and private schools.

Property Price    **£980,000**





Wood View, Hertfordshire EN6

Total Area: 157.5 m<sup>2</sup> ... 1695 ft<sup>2</sup> (excluding summerhouse / gym, garden store)  
 All measurements are approximate and for display purposes only.



- A SPACIOUS AND VERSATILE 4 BEDROOM DETACHED BUNGALOW
- OCCUPYING A GENEROUS CORNER PLOT
- 20'6 X 13'7 MAIN RECEPTION ROOM
- 14'11 X 12;5 KITCHEN / BREAKFAST ROOM
- 12'3 X 8'6 CONSERVATORY
- 18'8 X 10'9 MASTER SUITE with CONCEALED DRESSING ROOM and EN-SUITE
- 15'5 X 12'7 BEDROOM TWO
- 11'8 X 8'6 BEDROOM THREE
- 8'4 X 8'0 STUDY / BEDROOM FOUR
- 13'9 X 7'6 SUMMER HOUSE / GYM with attached 5'11 x 7'6 STORE ROOM



- Extensive local knowledge • Professional personal service • Full colour property particulars • Bespoke Marketing
- Major Website Portals • 24 Hour feedback pledge • Latest Technology

25 The Old Building, Bishops College, Churchgate, Hertfordshire, EN8 9XQ • t: 01707 877808 • t: 01992 845 842 • www.barronsresidential.co.uk



Disclaimer: "these property particulars, including floor plans, are set out as a general outline only for guidance and do not constitute any part of an offer or contract. Please note that all measurements above have been taken with a sonic tape measure and therefore may be subject to a small margin of error. A buyer is advised to obtain verification from their solicitor or surveyor. The agent has not tested any apparatus, equipment, fixture and fittings or services and therefore cannot verify that they are in working order or fit for the purpose" All enquiries and negotiations must be carried out through Barrons Residential.