

# Macintosh Close, West Cheshunt



**\*\* A SPACIOUS and IMPECCABLY PRESENTED THREE DOUBLE BEDROOM (TWO BATHROOM) DETACHED FAMILY HOME - COMPLEMENTED BY MODERN AND CONTEMPORARY INTERIORS, WITH UNDER FLOOR HEATING THROUGHOUT THE GROUND FLOOR, SPACIOUS LOUNGE WITH BI-FOLDING DOORS, A STUNNING KITCHEN / BREAKFAST ROOM AND EN-SUITE SHOWER ROOM TO MASTER BEDROOM. \*\***  
BARRONS are pleased to bring to market this spacious THREE DOUBLE BEDROOM, TWO BATHROOM DETACHED family home, commanding an enviable position in this peaceful and quiet turning, situated just off Hammond Street Road. This fine family home measures over 1400 sq. ft. and has been the subject of considerable expense and care by the current owners to provide bright and airy impeccably presented interiors, enhanced by a wealth of highly individual modern day features. The accommodation has been arranged over two floors and comprises: ENTRANCE HALLWAY, 19'4 X 10'4 KITCHEN / DINER, 17'7 X 15'11 LOUNGE with BI-FOLDING DOORS, GROUND FLOOR W.C. On the first floor there are THREE BEDROOMS measuring: 17'9 X 11'4 BEDROOM ONE with EN-SUITE BATHROOM, 13'11 X 9'3 BEDROOM TWO, 10'7 X 8'0 BEDROOM THREE and a SPACIOUS FAMILY BATHROOM off the landing. Outside the landscaped gardens have been laid with Artificial Lawn and enjoy a WEST FACING aspect, creating the ideal environment for alfresco dining and home entertaining. The property is approached via a paved driveway which provides access to the 16'6 x 8'5 INTEGRAL GARAGE. MACINTOSH CLOSE, is ideally situated with fine country walks, recreational parkland and highly regarded schooling close by. There are direct overground rail links to London Moorgate and London Liverpool Street from Cuffley and Cheshunt respectively.

Property Price    £620,000



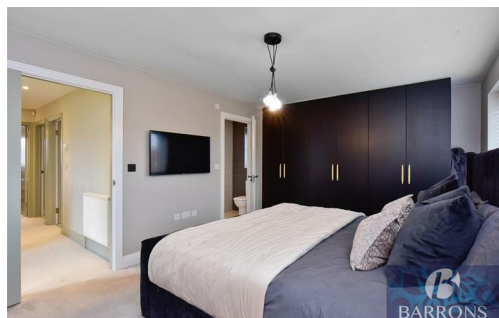


### Macintosh Close, Hertfordshire EN7

Total Area: 130.8 m<sup>2</sup> ... 1408 ft<sup>2</sup>

All measurements are approximate and for display purposes only

- THREE DOUBLE BEDROOM DETACHED FAMILY HOME
- MODERN AND CONTEMPORARY INTERIORS
- UNDER FLOOR HEATING THROUGHOUT THE GROUND FLOOR
- 17'7 X 15'11 LOUNGE with BI-FOLDING DOORS
- 19'4 X 10'4 KITCHEN / DINER
- GROUND FLOOR W.C
- 17'9 X 11'4 BEDROOM ONE with EN-SUITE SHOWER ROOM
- 13'11 X 9'3 BEDROOM TWO
- REMOTE CONTROLLED AIR-CONDITIONING (IN LOUNGE)
- 16'6 X 8'5 GARAGE with INTEGRAL DOOR



- Extensive local knowledge • Professional personal service • Full colour property particulars • Bespoke Marketing
- Major Website Portals • 24 Hour feedback pledge • Latest Technology

25 The Old Building, Bishops College, Churchgate, Hertfordshire, EN8 9XQ • t: 01707 877808 • t: 01992 845 842 • [www.barronsresidential.co.uk](http://www.barronsresidential.co.uk)

**BARRONS**  
RESIDENTIAL

Disclaimer: "these property particulars, including floor plans, are set out as a general outline only for guidance and do not constitute any part of an offer or contract. Please note that all measurements above have been taken with a sonic tape measure and therefore may be subject to a small margin of error. A buyer is advised to obtain verification from their solicitor or surveyor. The agent has not tested any apparatus, equipment, fixture and fittings or services and therefore cannot verify that they are in working order or fit for the purpose" All enquiries and negotiations must be carried out through Barrons Residential.