

# Grovedale Close, West Cheshunt

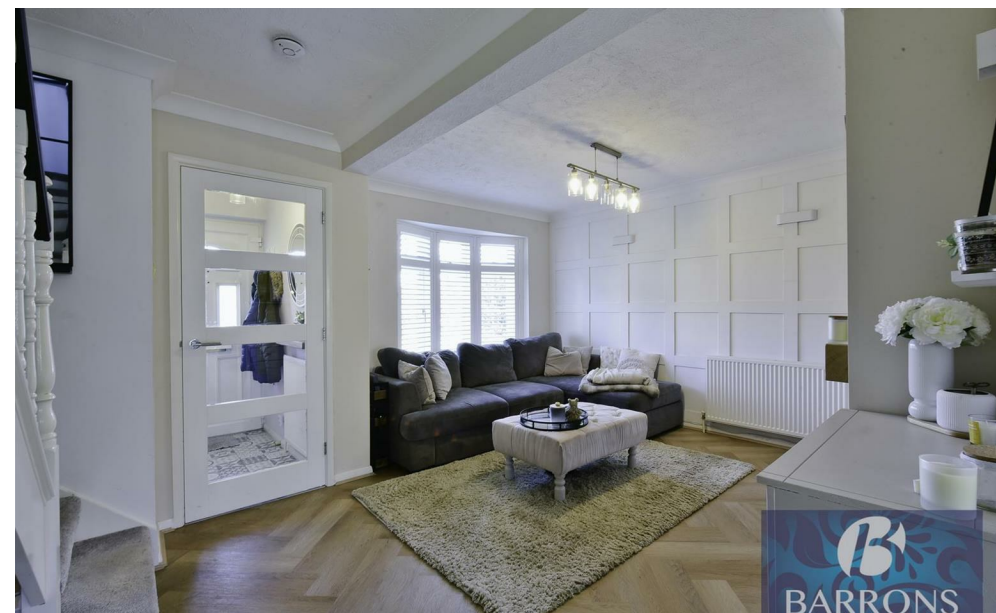


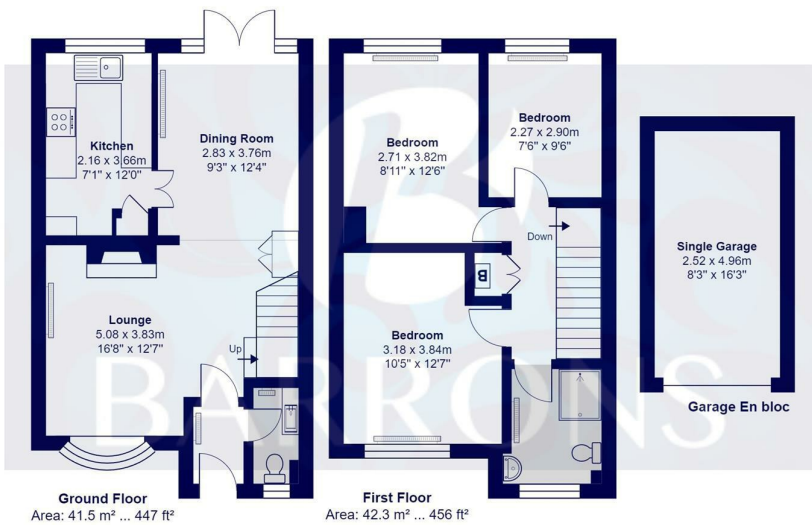
**\*\* A WELL PRESENTED THREE BEDROOM FAMILY HOME, WITH BRIGHT AND AIRY INTERIORS, GENEROUS WEST FACING REAR GARDEN AND GARAGE EN-BLOC. CHAIN FREE. \*\***

BARRONS are pleased to bring to market, this ATTRACTIVE and SPACIOUS, THREE BEDROOM, TWO RECEPTION ROOM family home. This charming property built in a classic neo-Georgian style, is located in a highly desirable and peaceful residential area, being only moments away from a selection of highly regarded primary and secondary schools. The accommodation has been arranged over two floors and comprises of in brief: ENTRANCE HALLWAY, 16'8 X 12'7 LOUNGE, 12'4 X 9'3 DINING AREA, 12'0 X 7'1 KITCHEN and a GROUND FLOOR W.C. On the first floor there are three well proportioned bedrooms, each measuring: 12'7 X 10'5 BEDROOM ONE, 12'6 X 8'11 BEDROOM TWO, 9'6 X 7'6 BEDROOM THREE and a FAMILY SHOWER ROOM off the landing.

Outside, the generous garden enjoys a WEST FACING aspect and has been mainly laid to lawn with an abutting patio area, providing the ideal environment for home entertaining. At the rear of the garden is a pedestrian gate providing access to additional section of garden and the 16'3 X 8'3 GARAGE EN-BLOC.

Property Price £459,950





**Grovedale Close, Hertfordshire EN7**

Total Area: 96.4 m<sup>2</sup> ... 1037 ft<sup>2</sup>

All measurements are approximate and for display purposes only



- AN ATTRACTIVE THREE BEDROOM FAMILY HOME
- WELL PRESENTED INTERIORS THROUGHOUT
- GENEROUS WEST FACING REAR GARDEN
- 16'3 X 8'3 GARAGE EN-BLOC
- 16'8 X 12'7 LOUNGE
- 12'4 X 9'3 DINING AREA
- 12'0 X 7'1 KITCHEN
- THREE WELL PROPORTIONED BEDROOMS
- GROUND FLOOR W.C
- CHAIN FREE



- Extensive local knowledge • Professional personal service • Full colour property particulars • Bespoke Marketing
- Major Website Portals • 24 Hour feedback pledge • Latest Technology

25 The Old Building, Bishops College, Churchgate, Hertfordshire, EN8 9XQ • t: 01707 877808 • t: 01992 845 842 • [www.barronsresidential.co.uk](http://www.barronsresidential.co.uk)



Disclaimer: "these property particulars, including floor plans, are set out as a general outline only for guidance and do not constitute any part of an offer or contract. Please note that all measurements above have been taken with a sonic tape measure and therefore may be subject to a small margin of error. A buyer is advised to obtain verification from their solicitor or surveyor. The agent has not tested any apparatus, equipment, fixture and fittings or services and therefore cannot verify that they are in working order or fit for the purpose" All enquiries and negotiations must be carried out through Barrons Residential.