



MARYLEBONE MANSIONS

LDN **M**_M W1

Development Overview

Within one of Marylebone's quiet residential streets you will find Marylebone Mansions, a collection of 32 exquisite contemporary residential apartments set behind a private facade that blends seamlessly into the period surrounds. Beautiful textures and materials have been chosen to reflect the streetscape of this conservation area. The building draws on the facade of the typical Marylebone townhouse and updates the silhouette with a contemporary twist.



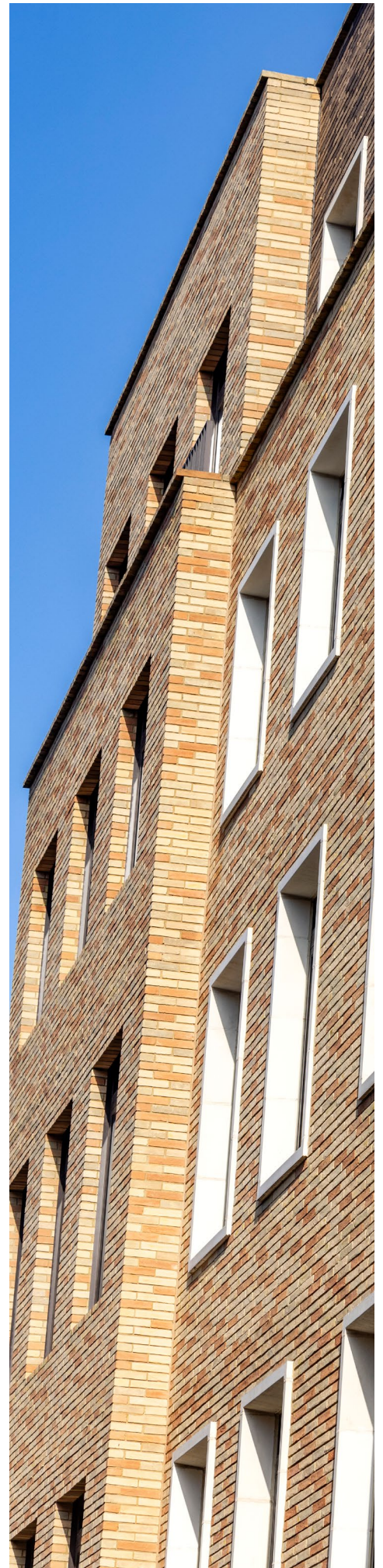
Unit Mix

- 5 x 1 Bedroom Apartments
- 15 x 2 Bedroom Apartments
- 12 x 3 Bedroom Apartments



Amenities

- Concierge
- Residents' Media Lounge
- Secure Underground Car Parking
- Cycle Storage



WELCOME TO MARYLEBONE MANSIONS

EDGWARE ROAD STATION 6 MINS
⌘

PADDINGTON 10 MINS
⌘

EUSTON STATION 19 MINS
⌘

VICTORIA STATION 21 MINS
⌘

WATERLOO STATION 25 MINS
⌘

ST PANCRAS INTERNATIONAL 19 MINS
⌘

LIVERPOOL STREET STATION 26 MINS
⌘

HEATHROW AIRPORT 40 MINS
⌘

CANARY WHARF STATION 28 MINS
⌘





RESTAURANTS

- 01 Hoppers
- 02 Colbeh
- 03 Chiltern Firehouse
- 04 Bizzaro
- 05 Carlotta
- 06 Twist Connubio
- 07 Lina Stores
- 08 Corrigan's
- 09 Scott's
- 10 Hakkasan
- 11 Sexy Fish
- 12 Chiltern Street Deli
- 13 Bricole
- 14 Harrison's Coffee
- 17 **The Monocle Café**

EDUCATION

- 36 University College London
- 37 University of Westminster
- 38 Regent's University
- 39 The University of Law
- 40 Royal Academy of Music
- 41 University of the Arts
- 42 London Business School

RETAIL

- 15 Daunt Books
- 16 Matches Fashion
- 18 Asprey
- 19 David Mellor
- 20 The Marylebone Florist
- 21 Selfridges
- 22 Cartier
- 23 Burberry
- 24 **The Conran Store**

CULTURE

- 25 Royal Academy of Arts
- 26 Royal Academy of Music
- 27 The Wallace Collection
- 28 Wigmore Hall
- 29 The British Library
- 30 Marble Arch
- 31 British Museum
- 32 English National Opera
- 33 The National Gallery
- 34 Serpentine Gallery
- 35 London Zoo



Development info

- Developer: Elliott House Guernsey Ltd.
- Service charge: £9.70 psf
- Ground rent: N/A
- Council tax: 23/24: Apartment dependent
£1,114.73 – £1,824.10 per annum
(Source: www.westminster.gov.uk)
- Tenure: 990+ year leasehold
- Warranty provider: BLP Insurance



Reservation Procedure

1. A reservation fee of £5,000 is payable at reservations of apartments up to £2,500,000, and £10,000 for units above £2,500,000
2. 10% of the purchase price is payable on exchange of contracts within 21 days (Less the reservation fee)

Reservation fee to be taken by agent



Developers Solicitor

Rosline King LLP
10 Old Bailey, London, EC4M 7NG
Ann Ebberson
E. ann.ebberson@rkllp.com
T: +44 20 7246 8084
www.rkllp.com



Contact Details

JLL Prime Sales Team
+44 (0)20 7087 5111
newhomes@eu.jll.com

LDN **M** **M** W1