

THE RESIDENCES

MANDARIN ORIENTAL

ONE-BEDROOM APARTMENT

N6.2



THE RESIDENCES
MANDARIN ORIENTAL
MAYFAIR LONDON

The Residences Mandarin Oriental, Mayfair

The Residences at Mandarin Oriental, Mayfair offers a unique serviced apartment living experience in the heart of the city. Residents enjoy exclusive access to services and amenities provided by the integrated Mandarin Oriental Mayfair Hotel.

These include in-residence dining and Michelin-starred cuisine by Chef Akira Back, round-the-clock concierge, housekeeping, valet parking, and a luxurious spa managed by our dedicated in-house Residences Team. For your peace of mind and comfort, Mandarin Oriental security team is present throughout the property day and night.

IMAGE P.03 – THE SLEEK FAÇADE OF THE RESIDENCES AT
MANDARIN ORIENTAL, MAYFAIR VIEWED FROM HANOVER SQUARE





THE RESIDENCES AT MANDARIN ORIENTAL



The Heart *of* London



HYDE PARK – 5 MIN WALK



BOND STREET – 1 MIN WALK



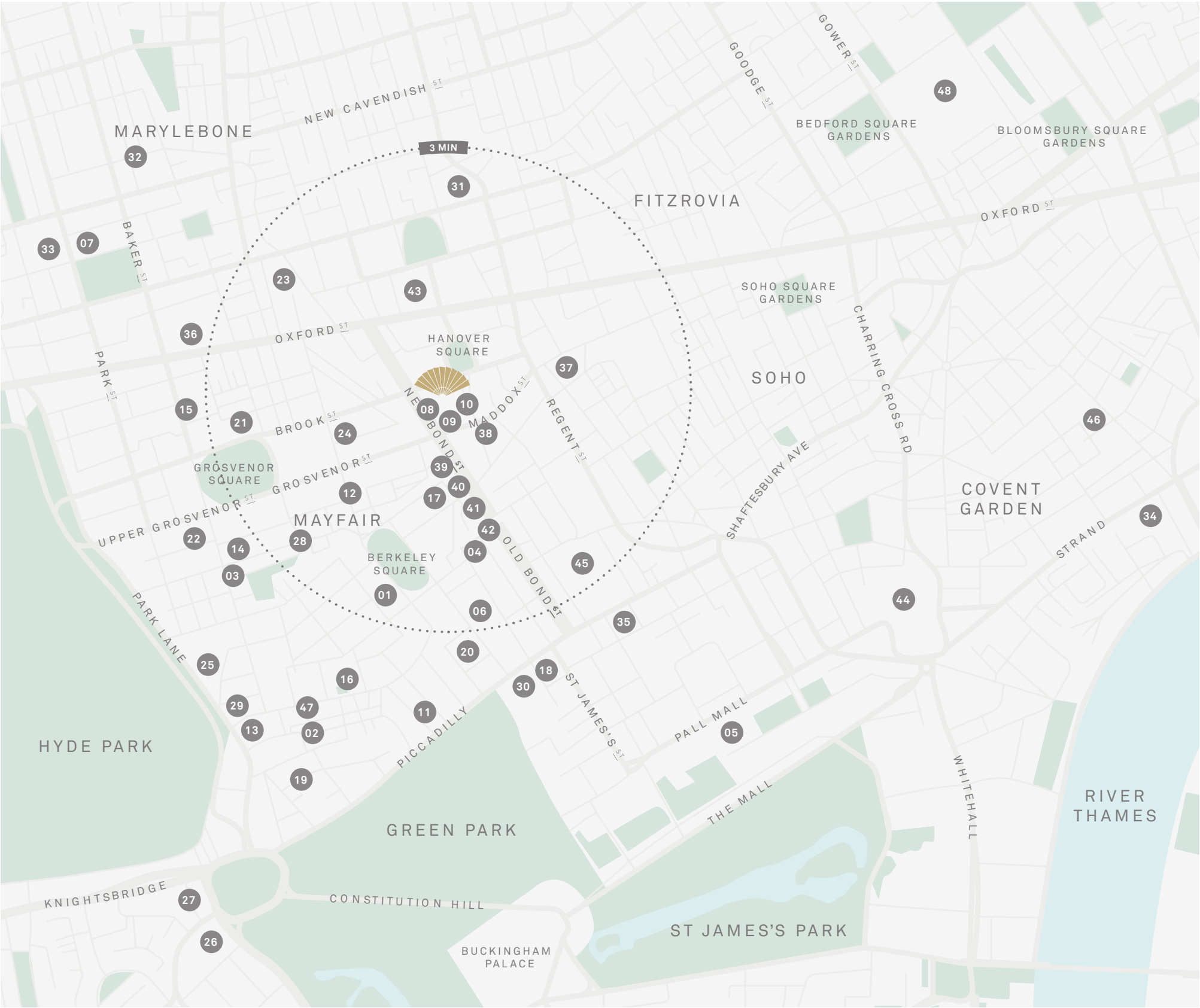
REGENT STREET – 1 MIN WALK



The Place to Be

Located between Bond Street and Regent Street, The Residences are within moments of London’s finest retail destinations, from flagship luxury boutiques to Savile Row tailors, and numerous notable private member clubs and restaurants.

MEMBERS CLUBS	HOTELS
01. ANNABEL'S	24. CLARIDGE'S
02. 5 HERTFORD STREET	25. THE DORCHESTER
03. GEORGE	26. THE PENINSULA
04. OSWOLD'S	27. THE LANESBOROUGH
05. RAC CLUB	28. THE CONNAUGHT
06. THE ARTS CLUB	29. 45 PARK LANE
07. HOME HOUSE	30. THE RITZ
	31. THE LANGHAM
	32. CHILTERN FIREHOUSE
	33. NOBU HOTEL
	34. THE SAVOY
RESTAURANTS	FASHION & RETAIL
08. AKIRA BACK	35. FORTNUM & MASON
09. ELSA	36. SELFRIDGES
10. ABAR ROOFTOP	37. LIBERTY
11. HIDE	38. LVMH
12. BACCHANALIA	39. GUCCI
13. CUT	40. HERMÈS
14. SCOTT'S	41. LORO PIANA
15. THE IVY	42. DIOR
16. MURANO	43. JOHN LEWIS
17. UMU	
18. THE WOLSELEY	
19. NOBU	
20. NOVIKOV	
21. GORDON RAMSAY	
22. 34 MAYFAIR	
23. LAVO	CULTURE
	44. THE NATIONAL GALLERY
	45. ROYAL ACADEMY OF ARTS
	46. ROYAL OPERA HOUSE
	47. CURZON MAYFAIR
	48. THE BRITISH MUSEUM





Introducing Residence N6.2

The one-bedroom Residence N6.2 epitomises refined city living. Featuring spacious interiors with the highest quality finishes and appliances, this residence offers a blend of modern elegance and comfort in one of London's most dynamic locales.

The apartment includes a large open-plan living area, a beautifully designed kitchen, and three exquisite bedrooms, each with a luxurious en-suite bathroom.

IMAGE P.08 – VIEW THROUGH TO FORMAL RECEPTION

IMAGE P.09 – BATHROOM VAINITY UNIT

IMAGE P.10 – MASTER BEDROOM SUITE







IMAGE P.12 – MASTER EN SUITE BATHROOM

IMAGE P.13 – DINING AREA

IMAGE P.14 – KITCHEN





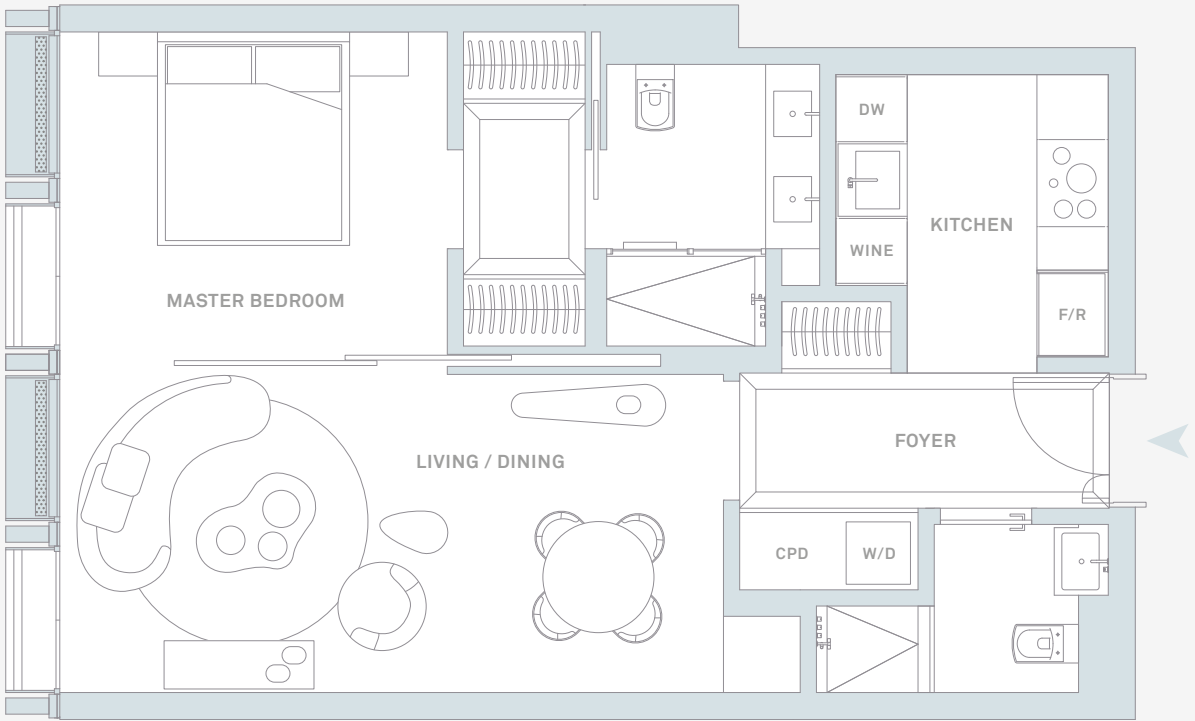
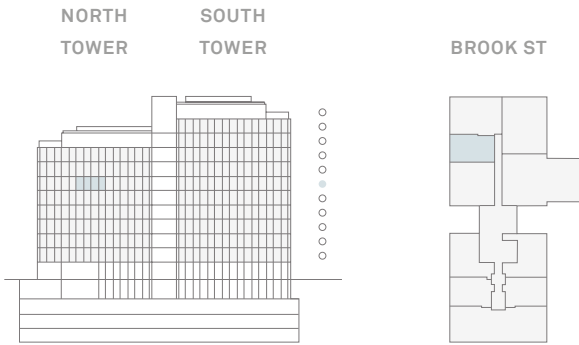


N6.2

ONE-BEDROOM APARTMENT

616 SQFT – 57 SQM

ROOM	SQFT	SQM
LIVING / DINING	194	18
KITCHEN	64	6
MASTER BEDROOM	150	14



CPD - CUPBOARD
W/D - WASHER/DRYER
F/R - FREEZER/REFRIGERATOR
DW - DISHWASHER
WINE - WINE REFRIGERATOR





Specifications

RESIDENCE FEATURES

- Floor-to-ceiling windows with openable doors
- Leather panelled wardrobes with integrated lighting
- Full-height, one leaf solid wood entrance doors
- Bespoke furniture and lighting design
- Engineered wood flooring in reception areas, bedrooms and corridors
- Feature stone flooring at entrance (selected residences)

LIGHTING AND AUDIOVISUAL

- Lighting control for all rooms (Lutron or similar)
- Fully integrated communications system to hotel services and 24-hour concierge
- Fully future-proofed AV set up through a terminated cabling backbone built in to finished residences

MASTER BATHROOM

- Carved stone to main walls with metal frame
- Carved stone double vanity with feature lighting (selected residences)
- Stone surround double-ended bath (selected residences)
- Separate WC and shower rooms (selected residences)
- Wall-hung electronic WC
- Dornbracht brassware (or similar)
- Marble floors
- Electric underfloor heating

HEATING AND COOLING

- Comfort cooling/heating throughout
- Electric underfloor heating in bathrooms

KITCHEN

- Bespoke kitchen design by Thomas Juul-Hansen
- Integrated kitchen island and carved stone banquette seat
- Stone countertop and splashback with fluted glass to finish overhead cupboards
- Integrated Gaggenau and Miele appliances
- Wine refrigerator
- Bespoke ironmongery
- Integrated, concealed lighting design

SECURITY

- 24-hour hotel monitored and staffed security in all internal and communal areas
- Lift access to secure underground parking

POWDER ROOM

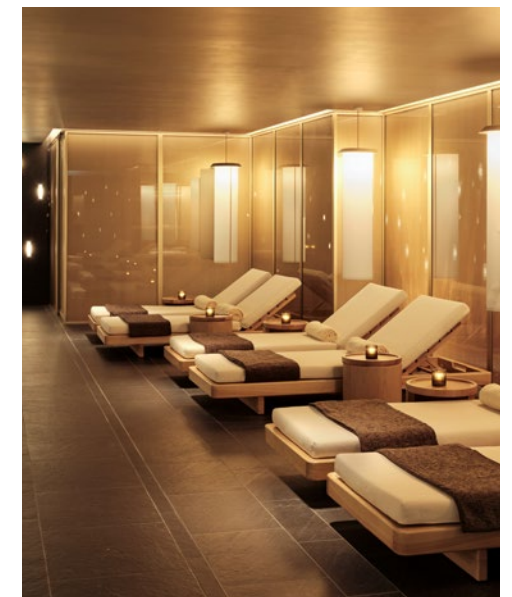
- Bespoke carved stone sink
- Discrete guest shower room (selected residences)
- Full-height mirror in vanity with metal and glass detailing
- Integrated mood lighting
- Dornbracht brassware (or similar)
- Stone flooring

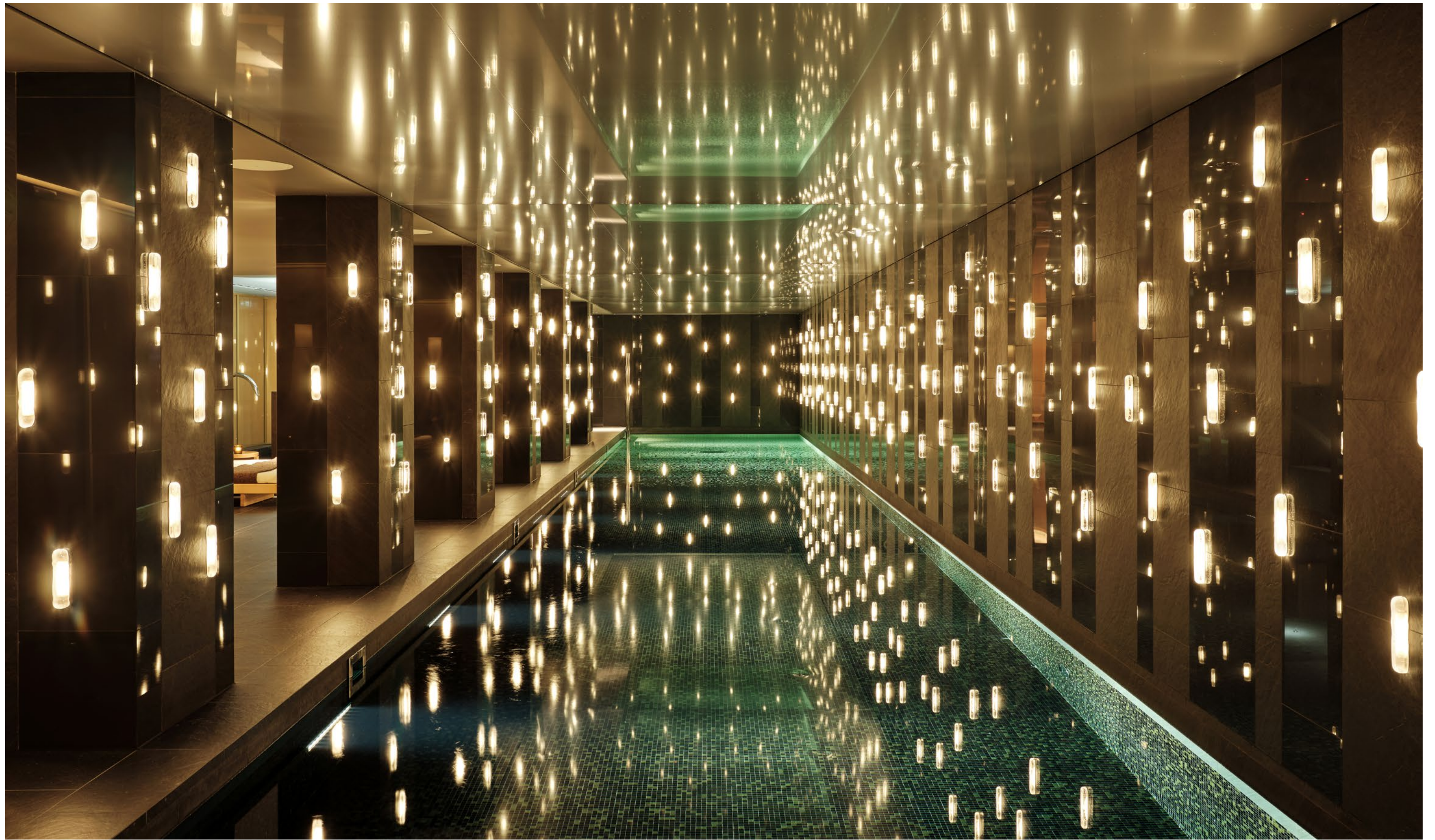
DESIGN

- Architectural design by Rogers Stirk Harbour + Partners
- Interior design by Thomas Juul-Hansen
- Residences Interior Design by Studio Indigo



The Home *of* Service







World-Class Amenities & Cuisine

Residents can enjoy a plethora of world-class amenities, including an award-winning spa, a state-of-the-art fitness centre, evening lounges and exquisite dining options. Culinary excellence can be experienced at the flagship Akira Back at Mandarin Oriental, the Dosa Korean Chef's Table, ABar Lounge and soon to be opening ABar Rooftop and Italian restaurant Elsa.

The Mandarin Oriental Hotel Group is renowned for its exceptional service standards, offering residents personalised experiences that surpass those of any other hotel brand. Rigorous staff training, meticulous attention to detail, and a commitment to providing the ultimate guest experience ensure an unforgettable stay.

IMAGE P.24 – AKIRA BACK AT MANDARIN ORIENTAL
IMAGE P.25 – LOBBY CONCIERGE AND SEATING AREA



The MOMAY Rental Pool

The Residences at Mandarin Oriental offer an exclusive apartment rental pool, allowing owners to rent out their luxury residences when not in use. Residences may be rented out on a short-term basis up to 90 Days through The Mandarin Oriental Mayfair Rental Pool.

The indicative earnings for this period range from £135,000 to £405,000+ net to owner according to your apartment size.

IMAGE P.26 – THE MANDARIN ORIENTAL HOUSEKEEPING TEAM
IMAGE P.27 (TOP) – ENJOY 24-HOUR IN-RESIDENCE ROOM SERVICE
IMAGE P.27 (BOTTOM) – A DOORMAN IN BESPOKE MOMAY UNIFORM





Elsa Italian Restaurant & Rooftop Bar Launching in 2024



IMAGE P.28 – THE MAIN DINING ROOM IN THE ELSA ITALIAN RESTAURANT
IMAGE P.29 – PANORAMIC VIEWS FROM THE ABAR ROOFTOP

A truly unique lifestyle with
the best of both worlds; the
comforts of a private home
combined with the unsurpassed
amenities and legendary service
of Mandarin Oriental.

C
CLIVEDALE
LONDON

CLIVEDALE LONDON
73-77 Brook Street
London W1K 4HX

AUGUSTIN DE ROUGÉ
+44 (0) 7877 777 752
adr@clivedale.com