



Abbots Gate, Bury St. Edmunds, Suffolk

£1,500

Property Summary

This spacious and modern 2-bedroom, 1-bathroom apartment in Bury St Edmunds is available to rent, offering comfortable living in a convenient location. The property features a private balcony, two parking spaces, and a bright, airy open-plan living and dining area—perfect for modern living.

- Available Now
- New Build
- 2 Bedrooms
- Open Plan Living
- Private Balcony
- 2 Parking Spaces



The apartment for rent in Bury St. Edmunds is a spacious and modern 2-bedroom, 1-bathroom property with balcony and 2 parking spaces. Situated in a convenient location, this unfurnished apartment offers a blank canvas for tenants to make their own. The open plan living and dining area is bright and airy, with large windows that let in plenty of natural light. The kitchen is well-equipped with modern appliances and ample storage space. The two bedrooms are both good-sized and offer plenty of space for storage. The bathroom is sleek and stylish, with a bathtub and shower combination.

This apartment is perfect for professionals or small families looking for a comfortable and convenient living space in Bury St. Edmunds.

Bury St. Edmunds, located in Suffolk, offers a charming mix of historic architecture, beautiful parks, and a vibrant cultural scene. Visitors can explore the stunning St. Edmundsbury Cathedral, take a stroll through the Abbey Gardens, or enjoy a play at the Theatre Royal. The town is also home to a variety of shops, restaurants, and cafes, perfect for leisurely days out. For those who enjoy outdoor activities, the surrounding countryside offers opportunities for hiking, cycling, and horse riding. Additionally, Bury St. Edmunds hosts regular events and festivals throughout the year, providing plenty of entertainment options for residents and visitors alike. With its rich history and thriving community, Bury St. Edmunds is a fantastic place to live and explore.

AGENTS NOTE

Unfortunately, this landlord cannot accept pets.

ENTRANCE HALL

Leading to:

LIVING ROOM

10'10" x 11'2" (3.30 m x 3.40 m)

Windows to side aspect, open plan leading to dining room and study area.

DINING AREA

9'6" x 19'0" (2.90 m x 5.79 m)

Windows to side aspect.

STUDY AREA

7'4" x 5'3" (2.24 m x 1.60 m)

Windows to side aspect.

KITCHEN

7'6" x 11'0" (2.29 m x 3.35 m)

Brand new kitchen comprising white wall and base units with a matching worktop. It includes a sink with drainer, as well as integrated appliances: fridge/freezer, dishwasher, and washer/dryer.

MAIN BEDROOM

8'11" x 11'11" (2.72 m x 3.63 m)

Windows to side aspect.



BEDROOM 2

8'11" x 11'1" (2.72 m x 3.38 m)

Windows to side aspect.

BATHROOM

4'7" x 11'1" (1.40 m x 3.38 m)

Brand new white bathroom suite comprising a hand basin, WC, walk-in shower, and a separate bath fitted with a handheld showerhead.

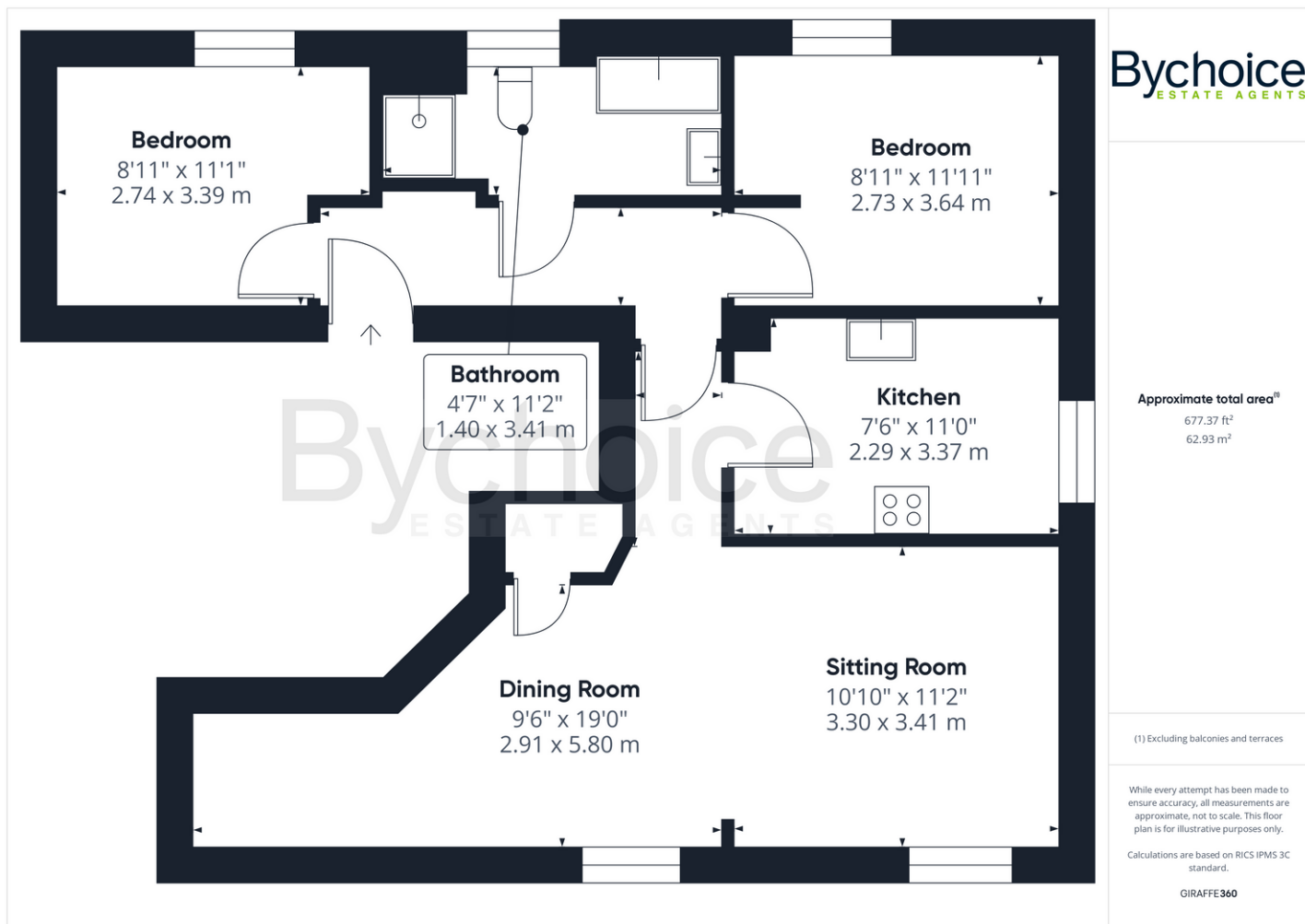
BALCONY

Private balcony overlooking Bury St Edmunds.

OUTSIDE

The property benefits from 2 parking spaces.





Energy Efficiency Rating		
	Current	Potential
Very energy efficient - lower running costs		
(92 plus) A		
(81-91) B	81	81
(69-80) C		
(55-68) D		
(39-54) E		
(21-38) F		
(1-20) G		
Not energy efficient - higher running costs		

Additional Information

Tenure:

Council Tax Band:

Local Authority: West Suffolk District Council

Post Code: IP33 2GL

Viewings by appointment only

Tel: 01787 468408

Email: sudbury@bychoice.co.uk

Bychoice
ESTATE AGENTS



Agents Note: Whilst every care has been taken to prepare these sales particulars, they are for guidance purposes only and whilst every care has been taken to ensure their accuracy, they should not be relied upon and potential buyers are advised to recheck the measurements.